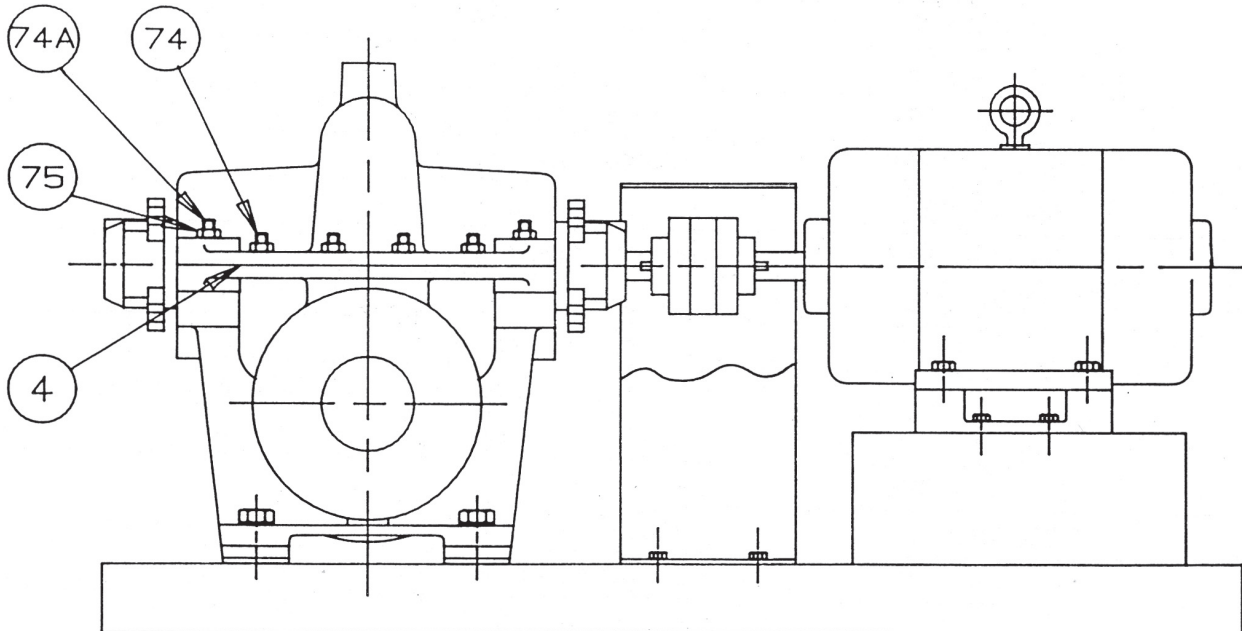
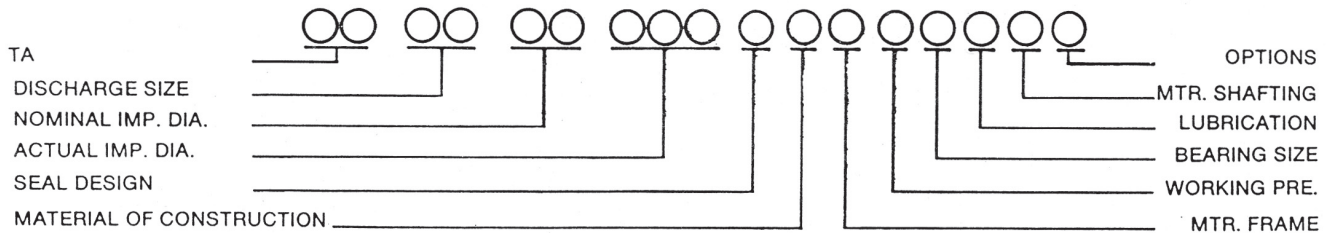


For Model Numbers – TA 1024, 1038, 1238 & 1530

SUPERSEDES: 304-057 October 1, 1992

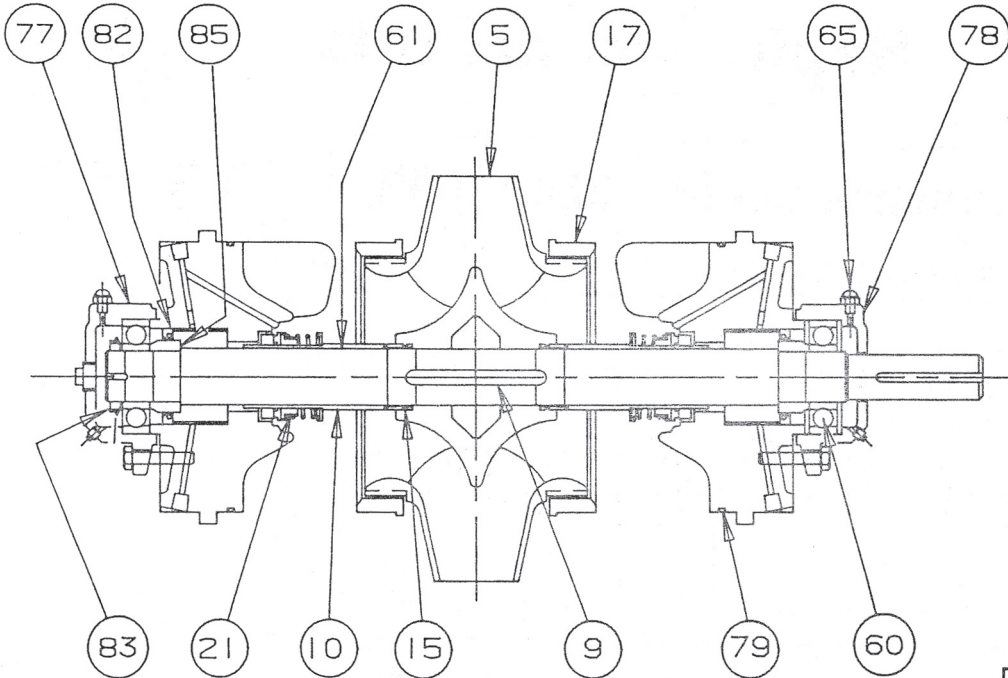
EFFECTIVE: October 1, 2009

WHEN SELECTING AND ORDERING PARTS, ALWAYS REFER TO SERIAL NUMBERS ON NAME PLATE.



"TA" Horizontal Split Case Pumps

Mechanical Seal Parts & Internal Parts



ITEM NO.	QTY.	I.D. NO.	PART NUMBER	DESCRIPTION	PUMP MODEL NO.				
					1024	1038	1238	1530	REMARKS
4	1	11	951-410RP	Casing Gasket Set	X				
4	1	16	951-406RP	Casing Gasket Set		X			
4	1	17	951-408RP	Casing Gasket Set			X		
4	1	13	951-400RP	Casing Gasket Set				X	
5	1	11	950-1229BRP	Bronze Impeller	X				
5	1	16	950-1234BRP	Bronze Impeller		X			
5	1	17	950-1235BRP	Bronze Impeller			X		
5	1	13	950-1231BRP	Bronze Impeller				X	
9	1	3	950-1243RP	Impeller Key	X	X	X	X	
10	2	8	950-1248BRP	Bronze Sleeve	X	X	X	X	
10	2	8	951-159RP	Stainless Steel Sleeve	X	X	X	X	
15	2	2	951-177RP	Sleeve "O" Ring	X	X	X	X	
17	2	4	950-1254BRP	Bronze Wear Ring	X	X			
17	2	6	950-1256BRP	Bronze Wear Ring			X	X	
21	2	2	950-674RP	Standard Water Seal	X	X	X	X	*
21	2	2	950-677RP	Hi-Temp. Water Seal	X	X	X	X	*
21	2	2	950-680RP	Ceramic Water Seal	X	X	X	X	*
60	2	2	950-963RP	Ball Bearing	X	X	X	X	
61	1	3	950-1266RP	Shaft (Stl.)	X	X	X	X	
61	1	3	950-1266RP	Shaft (S.S.)	X	X	X	X	

*Select seal per code on pump nameplate.

Mechanical Seal Parts & Internal Parts (continued)

ITEM NO.	QTY.	I.D. NO.	PART NUMBER	DESCRIPTION	PUMP MODEL NO.				REMARKS
					1024	1038	1238	1530	
65	2	1	950-1214RP	Grease Fitting	X	X	X	X	
74		2	950-1270RP	Casing Studs	17/X	21/X			**
74		3	950-1271RP	Casing Studs			19/X	16/X	**
74A	4	11	950-1275RP	Casing Studs	X	X			
74A	4	12	950-1276RP	Casing Studs			X	X	
75		1	950-1279RP	Casing Nuts	21/X	25/X			**
75		2	950-1280RP	Casing Nuts			23/X	20/X	**
77	1	2	950-1283RP	Bearing Housing (NDE)	X	X	X	X	
78	1	2	950-1286RP	Bearing Housing (DE)	X	X	X	X	
79	2		950-965RP	"O" Ring	X	X			
79	2		950-966RP	"O" Ring			X	X	
82	2	2	950-1290RP	Oil Seal	X	X	X	X	
83	1	2	950-1293RP	Nut, Bearing Retainer	X	X	X	X	
85	2	2	950-1296RP	Shoulder Ring	X	X	X	X	
	1		951-1853RP	(CW) Rotating Elem. Assy.	X				*
	1		951-1854RP	(CW) Rotating Elem. Assy.		X			*
	1		951-1855RP	(CW) Rotating Elem. Assy.			X		*
	1		951-1856RP	(CW) Rotating Elem. Assy.				X	*
	1		951-1875RP	(CCW) Rotating Elem. Assy.	X				*
	1		951-1876RP	(CCW) Rotating Elem. Assy.		X			*
	1		951-1877RP	(CCW) Rotating Elem. Assy.			X		*
	1		951-1878RP	(CCW) Rotating Elem. Assy.				X	*

**Number shown are quantities required. "X" is for pump model.

All bolts, lockwashers, plugs and coupler guard screws are hardware items.

*Impeller diameter must be specified.

*Bronze impeller and sleeve, carbon steel shaft and standard ni-resist seals.

Taco Comfort Solutions™ A Taco Group Company

Taco, Inc., 1160 Cranston Street, Cranston, RI 02920 | Tel: (401) 942-8000 | FAX: (401) 942-2360

Taco (Canada), Ltd., 8450 Lawson Road, Suite #3, Milton, Ontario L9T 0J8 | Tel: (905) 564-9422 | FAX: (905) 564-9436

Visit our web site: www.TacoComfort.com | Printed in USA | ©2015 Taco, Inc.

