



Replacement Parts

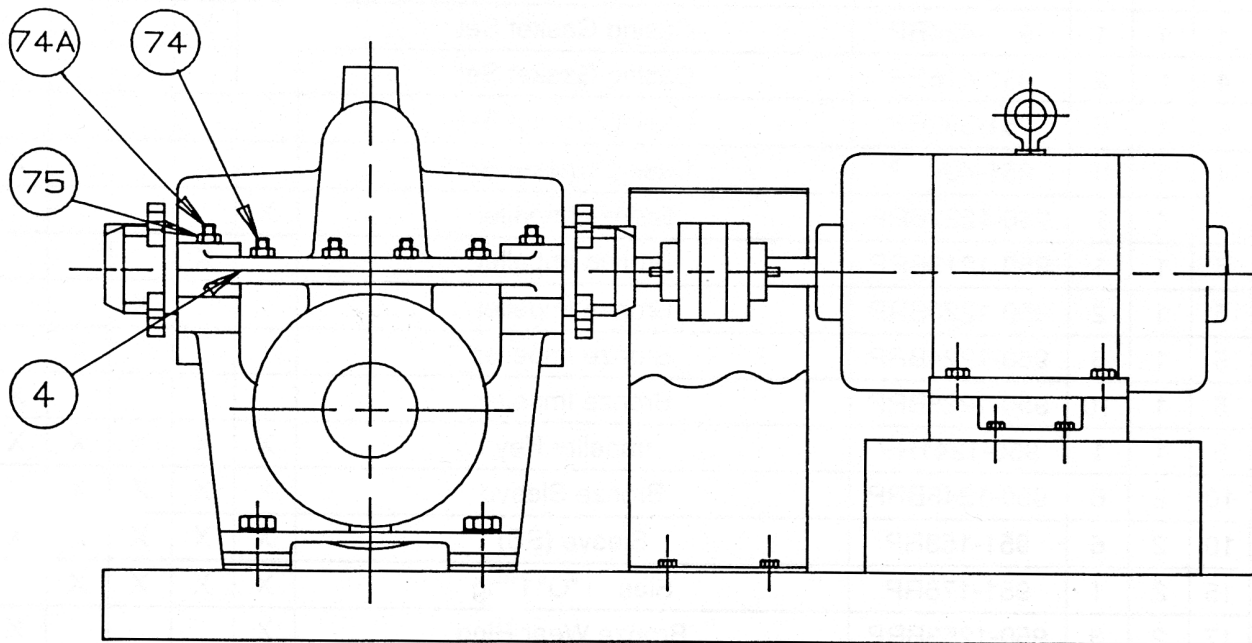
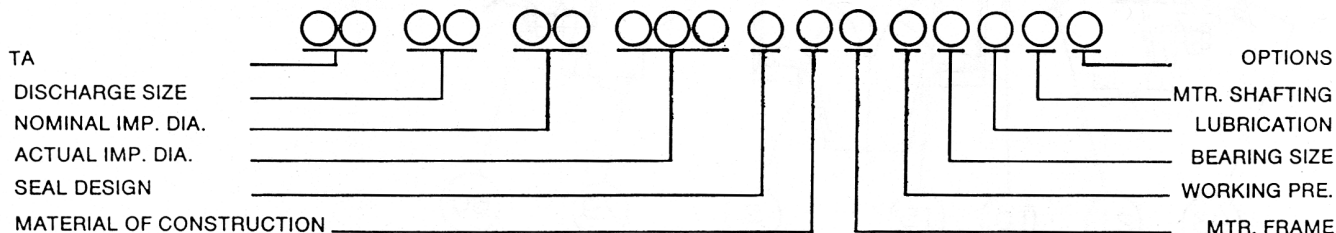
304-055

For Model Numbers— TA 0538, 0624, 0824, 0830 & 0838

SUPERSEDES: 304-032, 304-033, 304-034, 304-035 & 304-036

EFFECTIVE: OCTOBER 1, 1992

WHEN SELECTING AND ORDERING PARTS, ALWAYS REFER TO SERIAL NUMBERS ON NAME PLATE.



"TA" Horizontal Split Case Pumps



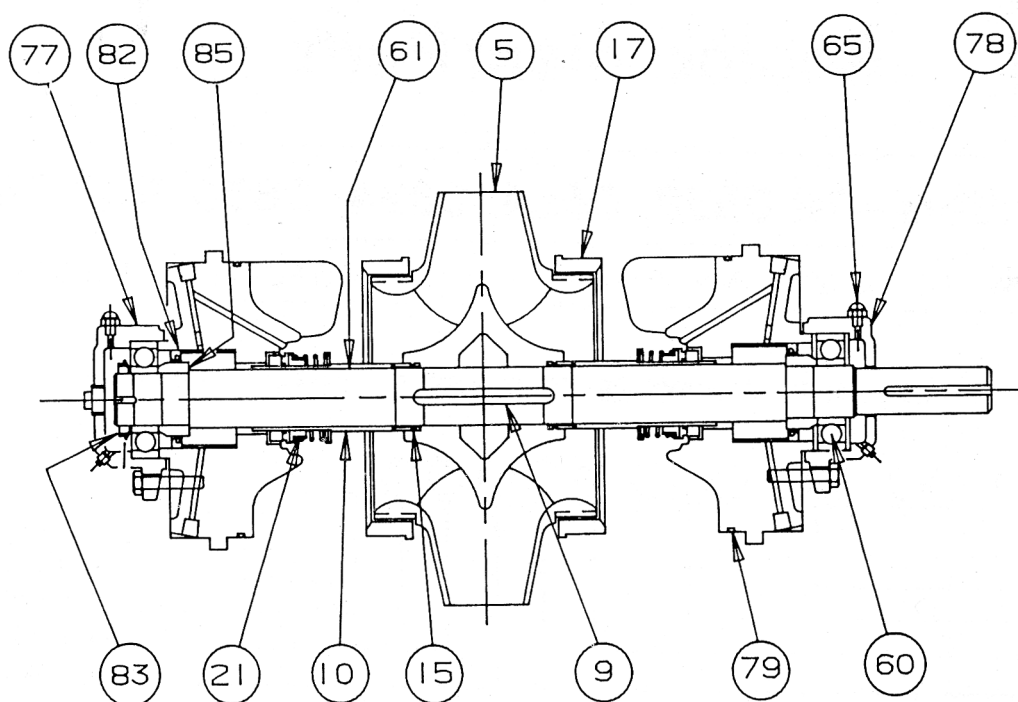
Taco, Inc., 1160 Cranston Street, Cranston, RI 02920 | Tel: (401) 942-8000 | FAX: (401) 942-2360

Taco (Canada), Ltd., 8450 Lawson Road, Suite #3, Milton, Ontario L9T 0J8 | Tel: (905) 564-9422 | FAX: (905) 564-9436

Visit our web site: www.TacoComfort.com | Printed in USA | ©2015 Taco, Inc.



Mechanical Seal Parts & Internal Parts



ITEM NO.	QTY.	I.D. NO.	PART NUMBER	DESCRIPTION	PUMP MODEL NO.					REMARKS
					0538	0624	0824	0830	0838	
4	1	9	951-422RP	Casing Gasket Set	X					
4	1	1	951-424RP	Casing Gasket Set		X				
4	1	2	951-416RP	Casing Gasket Set			X			
4	1	6	951-392RP	Casing Gasket Set				X		
4	1	10	951-404RP	Casing Gasket Set					X	
5	1	9	950-1227BRP	Bronze Impeller	X					
5	1	1	950-1219BRP	Bronze Impeller		X				
5	1	2	950-1220BRP	Bronze Impeller			X			
5	1	6	950-1224BRP	Bronze Impeller				X		
5	1	10	950-1228BRP	Bronze Impeller					X	
9	1	1	950-1241RP	Impeller Key	X	X	X	X	X	
10	2	6	950-1246BRP	Bronze Sleeve	X	X	X	X	X	
10	2	6	951-158RP	Sleeve (SS)	X	X	X	X	X	
15	2	1	951-176RP	Sleeve "O" Ring	X	X	X	X	X	
17	2	3	950-1253BRP	Bronze Wear Ring	X				X	
17	2	1	950-1251BRP	Bronze Wear Ring		X	X	X		
21	2	1	950-673RP	Standard Water Seal	X	X	X	X	X	*
21	2	2	950-676RP	Hi-Temp. Water Seal	X	X	X	X	X	*
21	2	3	950-679RP	Ceramic Water Seal	X	X	X	X	X	*
60	2	1	950-962RP	Ball Bearing	X	X	X	X	X	

*Select seal per code on pump nameplate.

Mechanical Seal Parts & Internal Parts (continued)

ITEM NO.	QTY.	I.D. NO.	PART NUMBER	DESCRIPTION	PUMP MODEL NO.					REMARKS
					0538	0624	0824	0830	0838	
61	1	1	950-1264RP	Shaft (Stl.)	X	X	X	X	X	
61	1	1	950-1264SRP	Shaft (S.S.)	X	X	X	X	X	
65	2	1	950-1214RP	Grease Fitting	X	X	X	X	X	
74		2	950-1270RP	Casing Studs	18/X				20/X	**
74		1	950-1269RO	Casing Studs		14/X	14/X	16/X		**
74A	4	11	950-1275RP	Casing Studs	X				X	
74A	4	10	950-1274RP	Casing Studs		X	X	X		
75		1	950-1279RP	Casing Nut	22/X	18/X	18/X	20/X	24/X	**
77	1	1	950-1282RP	Bearing Housing (NDE)	X	X	X	X	X	
78	1	1	950-1285RP	Bearing Housing (DE)	X	X	X	X	X	
79	2		950-965RP	"O" Ring	X				X	
79	2		951-370RP	"O" Ring		X	X	X		
82	2	1	950-1289RP	Oil Seal	X	X	X	X	X	
83	1	1	950-1292RP	Nut, Bearing Retainer	X	X	X	X	X	
85	2	1	950-1295RP	Shoulder Ring	X	X	X	X	X	
	1		951-1843RP	(CW) Rotating Elem. Assy.	X					*
	1		951-1844RP	(CW) Rotating Elem. Assy.		X				*
	1		951-1845RP	(CW) Rotating Elem. Assy.			X			*
	1		951-1846RP	(CW) Rotating Elem. Assy.				X		*
	1		951-1847RP	(CW) Rotating Elem. Assy.					X	*
	1		951-1865RP	(CCW) Rotating Elem. Assy.	X					*
	1		951-1866RP	(CCW) Rotating Elem. Assy.		X				*
	1		951-1867RP	(CCW) Rotating Elem. Assy.			X			*
	1		951-1868RP	(CCW) Rotating Elem. Assy.				X		*
	1		951-1869RP	(CCW) Rotating Elem. Assy.					X	*

**Number shown are quantities required. "X" is for pump model.

All bolts, lockwashers, plugs and coupler guard screws are hardware items.

*Impeller diameter must be specified.

*Bronze impeller and sleeve, carbon steel shaft and standard ni-resist seals.