

Submittal Data Information

Double Wall Heat Exchangers

201-070

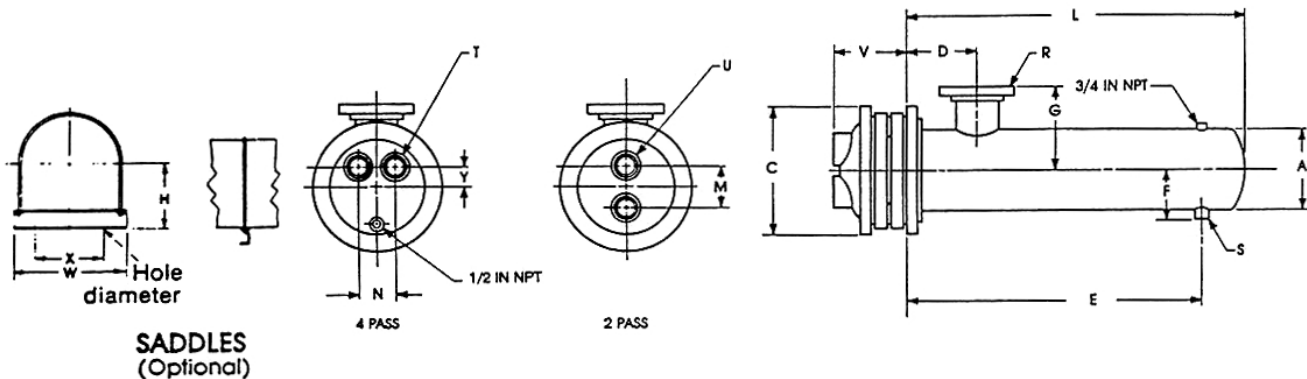
6" Diameter Steam

SUPERSEDES: 1/2/91

EFFECTIVE February 15, 1993

Job: _____

Item No.	Model No.	Pass	GPM Tubes	Temp. In	Temp. Out	Steam Pressure Shell	Pressure Drop Tubes	Velocity Tubes



DIMENSIONS: 6 Inch Diameter

Model Number		Cast Iron Heads						Dimensions (Inches)										Heating Surface (sq. ft.)	Shipping Weight (lbs.)
2 Pass	4 Pass	2 Pass		4 Pass				2 and 4 Pass											
		M	U	N	T	Y	V	A	C	D	E	F	G	L	R	S			
G6204S	G6404S	4	2T	3¾	1½T	1¼	3¾	6½	11	5	18½	4¾	4¾	25	1½T	1T	17.7	138	
G6206S	G6406S	4	2T	3¾	1½T	1¼	3¾	6½	11	5	30½	4¾	4¾	37	2T	1T	27.4	156	
G6208S	G6408S	4	2T	3¾	1½T	1¼	3¾	6½	11	5	42½	4¾	5¾	49	2½T	1T	37.2	200	
G6210S	G6410S	4	2T	3¾	1½T	1¼	3¾	6½	11	5	54½	4¾	5¾	61	2½T	1T	47.0	225	
G6212S	G6412S	4	2T	3¾	1½T	1¼	3¾	6½	11	5	66½	4¾	5½	73	3T	1T	56.8	253	
G6214S	G6414S	4	2T	3¾	1½T	1¼	3¾	6½	11	5	78½	4¾	5½	85	3T	1T	66.8	280	
G6216S	G6416S	4	2T	3¾	1½T	1¼	3¾	6½	11	5	90½	4¾	5½	97	3T	1T	76.6	310	
G6218S	G6418S	4	2T	3¾	1½T	1¼	3¾	6½	11	5	102½	4¾	5½	109	3T	1T	86.4	336	
G6220S	G6420S	4	2T	3¾	1½T	1¼	3¾	6½	11	5	114½	4¾	5½	121	3T	1T	96.2	364	

SADDLE DIMENSIONS: H-6¹/₁₆; W-9¹/₄; X-7¹/₂; Hole Dia.-⁵/₁₆

MATERIALS OF CONSTRUCTION (Unless otherwise indicated, standard will be furnished.)

	Standard	Optional
Shell	Steel	304ss
Head	Cast Iron 4"-10" Fabricated Steel 12"	Fabricated Steel, Fabricated 304ss
Tubes	3/4" Double Wall Copper Enhanced Heating Surface	
Tube Sheet	Steel	304ss
Separators	Steel	304ss
Working Pressure	150 PSIG (ASME)	
Maximum Temperature	375°F	
	Visual Leak Detection	

All dimensions shown are subject to change and should not be used for pre-piping. Contact your local Taco representative should certified dimensional drawings be required.

