



# Submittal Data Information

## Double Wall Heat Exchangers

201-069

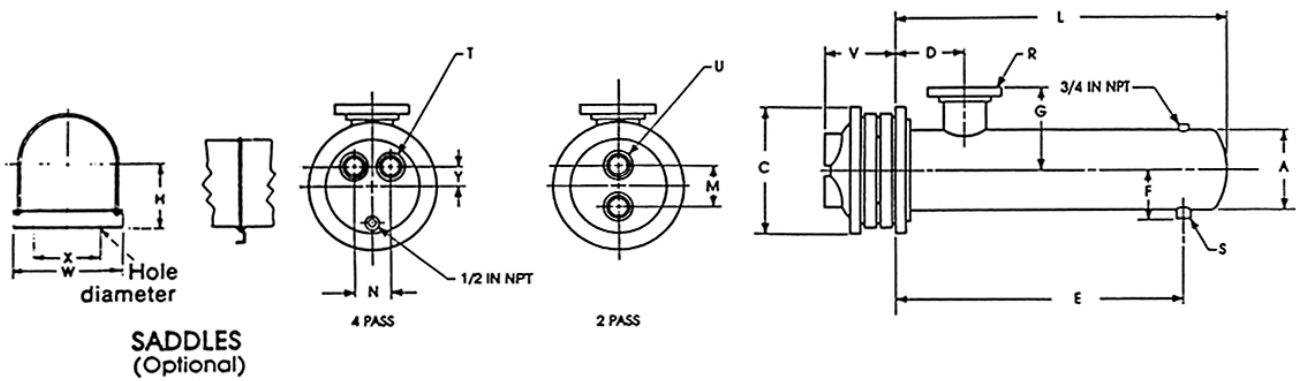
4" Diameter Steam

SUPERSEDES: January 2, 1991

EFFECTIVE: February 15, 1993

Job: \_\_\_\_\_

Item No.	Model No.	Pass	GPM Tubes	Temp. In	Temp. Out	Steam Pressure Shell	Pressure Drop Tubes	Velocity Tubes
----------	-----------	------	-----------	----------	-----------	----------------------	---------------------	----------------



### DIMENSIONS: 4 Inch Diameter

Model Number		Cast Iron Heads						Dimensions (Inches)									Heating Surface (sq. ft.)	Shipping Weight (lbs.)
2 Pass	4 Pass	2 Pass		4 Pass				2 and 4 Pass										
		M	U	N	T	Y	V	A	C	D	E	F	G	L	R	S		
G4204S	G4404S	2½	1½T	2½	1T	7/8	3½	4½	9	5	19½	4	4	24½	1½T	1T	9.1	76
G4206S	G4406S	2½	1½T	2½	1T	7/8	3½	4½	9	5	31½	4	4	36½	1½T	1T	13.9	86
G4208S	G4408S	2½	1½T	2½	1T	7/8	3½	4½	9	5	43½	4	4	48½	1½T	1T	18.9	95
G4210S	G4410S	2½	1½T	2½	1T	7/8	3½	4½	9	5	55½	4	4	60½	1½T	1T	23.9	105
G4212S	G4412S	2½	1½T	2½	1T	7/8	3½	4½	9	5	67½	4	3¾	72½	1½T	1T	28.7	115
G4214S	G4414S	2½	1½T	2½	1T	7/8	3½	4½	9	5	79½	4	3¾	84½	1½T	1T	33.7	125
G4216S	G4416S	2½	1½T	2½	1T	7/8	3½	4½	9	5	91½	4	3¾	96½	1½T	1T	38.5	135
G4218S	G4418S	2½	1½T	2½	1T	7/8	3½	4½	9	5	103½	4	3¾	108½	1½T	1T	45.5	145
G4220S	G4420S	2½	1½T	2½	1T	7/8	3½	4½	9	5	115½	4	3¾	120½	1½T	1T	48.3	155

SADDLE DIMENSIONS: H-5¼; W-6¼; X-5½; Hole Dia.-½

### MATERIALS OF CONSTRUCTION (Unless otherwise indicated, standard will be furnished.)

Shell	Standard Steel	Optional 304ss
Head	Cast Iron 4"-10" Fabricated Steel 12"	Fabricated Steel, Fabricated 304ss
Tubes	¾" Double Wall Copper Enhanced Heating Surface	
Tube Sheet	Steel	304ss
Separators	Steel	304ss
Working Pressure	150 PSIG (ASME)	
Maximum Temperature	375°F	
	Visual Leak Detection	

All dimensions shown are subject to change and should not be used for pre-piping. Contact your local Taco representative should certified dimensional drawings be required.



Taco, Inc., 1160 Cranston Street, Cranston, RI 02920 | Tel: (401) 942-8000 | FAX: (401) 942-2360

Taco (Canada), Ltd., 8450 Lawson Road, Suite #3, Milton, Ontario L9T 0J8 | Tel: (905) 564-9422 | FAX: (905) 564-9436

Visit our web site: www.TacoComfort.com | Printed in USA | ©2015 Taco, Inc.

