




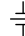
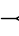
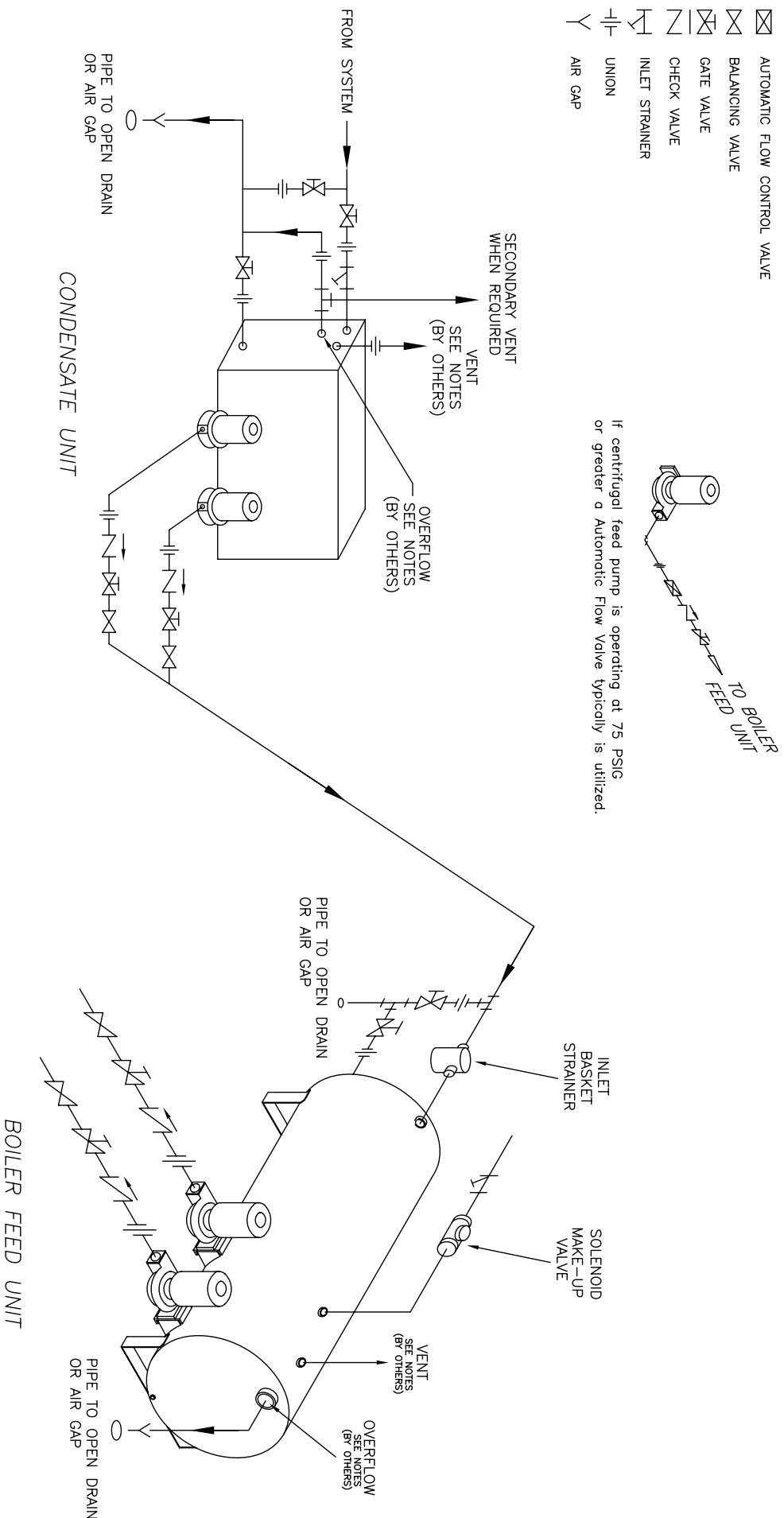


LEGEND

-  AUTOMATIC FLOW CONTROL VALVE
-  BALANCING VALVE
-  GATE VALVE
-  CHECK VALVE
-  INLET STRAINER
-  UNION
-  AIR GAP

DISCHARGE PIPING W/ AUTOMATIC FLOW VALVE

If centrifugal feed pump is operating at 75 PSIG or greater a Automatic Flow Valve typically is utilized.



NOTES:

- INSTALL FULL SIZE (MINIMUM SIZE) VENT TO ATMOSPHERE.
- INSTALL FULL SIZE (MINIMUM SIZE) OVERFLOW TO AIR-GAP OR OPEN DRAIN.
- VENT PIPING DETAIL MUST BE DESIGNED AND INSTALLED BY A PROFESSIONAL LICENSED & REGISTERED AS REQUIRED FAMILIAR WITH EQUIPMENT AND ITS INTENDED USE TO MEET ALL LOCAL, STATE AND FEDERAL CODES RULES AND REGULATIONS.

SHIPCO®
SPUMPS

MANUFACTURED BY
SHIPPENSBURG PUMP COMPANY INC.
P.O. Box 279 Shippenburg, Pa. 17267
PHONE 717 532-7321 / FAX 717 532-7704
WWW.SHIPCO-PUMPS.COM

SHIPCO® IS A REGISTERED TRADEMARK OF SHIPPENSBURG PUMP CO., INC.

Typical Piping Diagram Condensate Unit Centrifugal Pumps

DRAWN BY	DATE	REVISION
S.A.D.	6/04	.0

DIMENSION PRINT	30026
-----------------	-------



SHIPPENSBURG PUMP CO., INC.
P.O. BOX 279, SHIPPENSBURG, PA 17257
WWW.SHIPCOPUMPS.COM

PHONE 717-532-7321
FAX 717-532-7704

Disclaimer with Terms & Conditions of Use for SHIPCO® Drawings

SHIPCO® DRAWINGS DISCLAIMER

All intellectual property rights (including, without limitation, all copyright and design rights) expressed in the drawings and related information belongs to Shippensburg Pump Company, Inc. The User may not, under any circumstances use or allow the use of drawings with any product or system other than Shippensburg Pump Company, Inc. products or systems. This product must be installed and used in such a manner that standard operating pressures are not exceeded. This product may not be changed, altered, installed, used, or operated in any manner other than as described in the product IOM Manual must be strictly followed. Any change or alteration in this product, or any deviation from the installation instructions, will void the product warranty. In addition, Shippensburg Pump Company, Inc. will not be responsible for any damages or injuries that occur to persons or property if the product is changed, altered, installed, used, or if operating pressures are increased, in any manner not consistent with and as set forth in printed materials supplied with this product by Shippensburg Pump Company, Inc.

TERMS AND CONDITIONS OF USE OF SHIPCO® DRAWINGS:

The reproduction and use of this material is only authorized for purposes connected with the specification or use of Shippensburg Pump Company, Inc. products and systems. This information may not contain the full details required for use of this product or system. It is the User's responsibility to ensure full performance specifications and to ensure specification and installation of SHIPCO® products and systems are in accordance with SHIPCO® manuals, catalogs, or other distributed literature. The User should seek expert advice to ensure suitability of these drawings for your specific application. The user is responsible for complying with all federal, state, or local regulatory laws, permit requirements, and codes.

THESE DRAWINGS ARE FURNISHED FOR INFORMATION ONLY. ALL DIMENSIONS SHOWN ARE SHEET SPECIFIC. USE OF THESE DRAWINGS (INCLUDING DESIGN AND DIMENSIONS) MUST BE CHECKED BY THE USER'S ENGINEER TO ENSURE DESIGN IS ADEQUATE FOR THE INTENDED USE. THESE DRAWINGS WILL BE REVISED PERIODICALLY AND IT SHALL BE THE RESPONSIBILITY OF THE USER OF THESE FILES TO KEEP THEM CURRENT WITH ANY UPDATES.

Shippensburg Pump Company, Inc. accepts no responsibility or liability for any loss or damage caused to the User or any third party through any use of the drawings or related information, which use contravenes these terms of use, including but not limited to, any use of the drawings and related information. Since revisions or additions to the design file Drawings and Details may occur at any time, the User agrees to indemnify, defend and hold harmless Shippensburg Pump Company, Inc., its officers, agents, and employees from and against any and all claims, suits, losses, damages or costs, including reasonable attorney's fees, arising from the use of outdated design file Drawings and Details, and such indemnification shall survive acceptance of said file(s) by receiver.

The design files Drawings and Details represent intellectual property owned by Shippensburg Pump Company, Inc. that are the subject of either copyrighted or patented material. All such copyrights or patents are owned by Shippensburg Pump Company, Inc. Any use of this material without the express written consent of Shippensburg Pump Company, Inc. is strictly prohibited. Shippensburg Pump Company, Inc. assumes no liability for hardware or software damage that may result from the use of the electronic files provided on disk, tape or by electronic transfer due to unknown viruses that may reside on the electronic media when transferred to the end user.

These terms and conditions constitute the complete and final agreement of the parties hereto.

User accepts the aforementioned terms and conditions.