

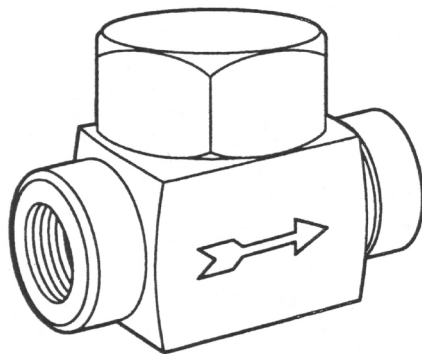


Bell & Gossett
a xylem brand

SUBMITTAL

HS-252A

JOB:		REPRESENTATIVE:	
UNIT TAG:	ORDER NO.	DATE:	
ENGINEER:	SUBMITTED BY:	DATE:	
CONTRACTOR:	APPROVED BY:	DATE:	



Hoffman Specialty® Series TD6520 Thermodisc Steam Traps

Ratings				
Model Number	PMO Max. Operating Pressure psig (bar)	TMO Maximum Operating Temperature °F (°C)	PMA Max. Allowable Pressure psig (bar)	TMA Maximum Allowable Temperature °F (°C)
TD6523	600 (41.4)	800 (428)	600 (41.4)	800 (428)
TD6524	600 (41.4)	800 (428)	600 (41.4)	800 (428)
TD6526	600 (41.4)	800 (428)	600 (41.4)	800 (428)
TD6528	600 (41.4)	800 (428)	600 (41.4)	800 (428)

Materials of Construction	
Part	Specifications
Body	420F Stainless Steel ASTM A743 CA40F
Cap	420 Stainless Steel ASTM A743 CA40
Disc	420 Stainless Steel ASTM A743 CA40

SCHEDULE

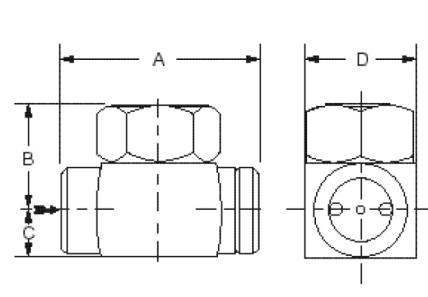
PART NUMBER	MODEL NUMBER	SIZE NPT INCHES	INLET PRESS. psi (bar)	DIFF. PRESS. psi (bar)	FLOW RATE lb/hr (kg/hr)	TAGGING INFORMATION	QUANTITY
405151	TD6523	3/8					
405152	TD6524	1/2					
405153	TD6526	3/4					
405154	TD6528	1					

Series TD6520 Thermodisc Steam Traps

HS-252(A)

Dimensions, in. (mm)

Model	NPT Size in.	A	B	C	D	Approx. Weight lbs. (kg)
TD6523	3/8	2 (51)	13/16 (21)	9/16 (14)	1-1/2 (38)	0.8 (0.36)
TD6524	1/2	2-3/4 (70)	1-3/8 (35)	5/8 (16)	1-1/2 (38)	1.3 (0.59)
TD6526	3/4	2-3/4 (70)	1-5/8 (41)	13/16 (21)	2 (51)	2.1 (0.95)
TD6528	1	3-1/4 (83)	1-15/16 (49)	15/16 (24)	2 (51)	3.2 (1.45)



Capacities lbs./hr (kg/hr). Capacities shown are gross ratings at 10 °F below saturation.

Series TD6520 Thermodisc Trap

Model Number	NPT Size In.	Pressure Differential in Pounds per Square Inch (bar)													
		2 (0.14)	5 (0.35)	10 (0.69)	25 (1.7)	50 (3.5)	75 (5.2)	100 (6.9)	150 (10.4)	200 (13.8)	250 (17.3)	300 (20.7)	400 (27.6)	500 (34.5)	600 (41.4)
TD6523	3/8	180 (82)	185 (84)	190 (86)	210 (95)	255 (116)	315 (143)	375 (170)	500 (227)	610 (277)	700 (318)	790 (358)	955 (433)	1105 (501)	1250 (567)
TD6524	1/2	290 (132)	310 (141)	345 (156)	440 (200)	580 (263)	710 (322)	810 (367)	995 (451)	1140 (517)	1275 (578)	1405 (637)	1630 (739)	1825 (828)	2000 (907)
TD6526	3/4	395 (179)	420 (191)	465 (211)	600 (272)	815 (370)	1000 (454)	1160 (526)	1440 (653)	1675 (760)	1895 (860)	2095 (950)	2430 (1102)	2750 (1247)	3050 (1383)
TD6528	1	620 (201)	660 (299)	730 (331)	920 (417)	1215 (551)	1490 (676)	1740 (789)	2195 (996)	2585 (1173)	2910 (1320)	3230 (1465)	3770 (1710)	4245 (1926)	4700 (2132)

xylem
Let's Solve Water

Xylem Inc.
8200 N. Austin Avenue
Morton Grove, Illinois 60053
Phone: (847) 966-3700
Fax: (847) 965-8379
www.bellgossett.com

Bell & Gossett is a trademark of Xylem Inc. or one of its subsidiaries.
© 2013 Xylem Inc. HS-252A May 2013