

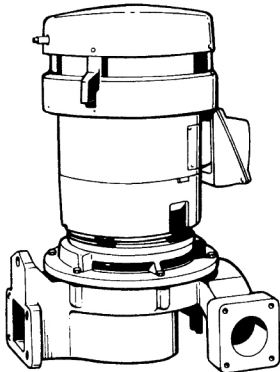


Bell & Gossett
a xylem brand

SUBMITTAL

S411B

JOB	B & G REPRESENTATIVE	
UNIT TAG NO.	ORDER NO.	DATE
ENGINEER	SUBMITTED BY	DATE
CONTRACTOR	APPROVED BY	DATE



Domestic® Pump Centriflo® Series C35™ and C17™ Style PF Centrifugal Pumps

SPECIFICATIONS

MATERIALS OF CONSTRUCTION

Bronze Fitted Pump with Bronze Wear Ring
Stainless Steel Motor Shaft

MECHANICAL SEAL

Carbon/Ceramic Faces
Temperature Range:
-20° to 250°F (-29°C to 121°C)
PH Limits: 7-9

- Buna N Elastomers (Standard)
- Viton Elastomers (Optional)

CONDITIONS

_____ GPM _____ FT.

ELECTRICAL DATA _____ HP

_____ VOLTS _____ CY _____ PH

MOTOR ENCLOSURE

- ODP
- TEFC
- EXPLOSION PROOF

APPROXIMATE WEIGHT _____ LBS

APPROXIMATE MOTOR DIMENSIONS IN INCHES (MM)

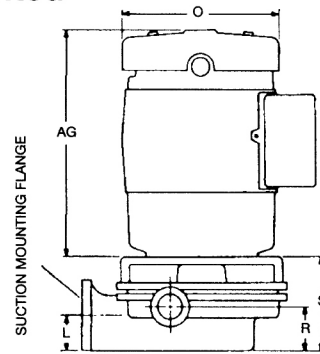
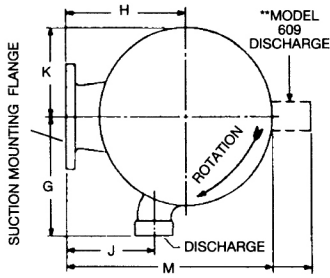
3500 RPM

ODP Motor HP	1/3	1/2-1	1-2	1 1/2-2	2-3	5	7 1/2	10	15	—
TEFC Motor HP	—	—	1/2-1 1/2	1-1 1/2	2	3	5	7 1/2	10	15
Dimension O	5 3/4 (146)	6 3/4 (171.4)	6 3/4 (171.4)	7 3/8 (187.3)	7 3/8 (187.3)	10 3/8 (263.5)	10 3/8 (263.5)	11 1/2 (292.1)	11 1/2 (292.1)	13 1/4 (336.5)
Dimension AG	8 1/2 (215.9)	9 1/2 (241.3)	11 (279.4)	11 (279.4)	12 (304.8)	12 1/2 (317.5)	14 (355.6)	17 (431.8)	17 (431.8)	20 (508)

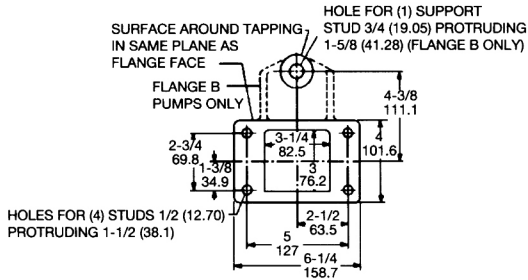
1750 RPM

ODP & TEFC Motor HP	1/3-1	1	1-2	2-3	5	7 1/2	10	15
Dimension O	6 3/4 (171.4)	7 3/8 (187.3)	7 3/8 (187.3)	10 3/8 (263.5)	10 3/8 (263.5)	11 1/2 (292.1)	11 1/2 (292.1)	13 1/4 (336.5)
Dimension AG	11 (279.4)	11 (279.4)	12 (304.8)	12 1/2 (317.5)	14 (355.6)	17 (431.8)	17 (431.8)	20 (508)

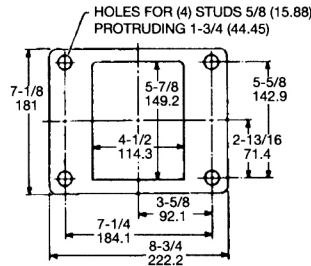
Style PF – Suction Flange Mounted



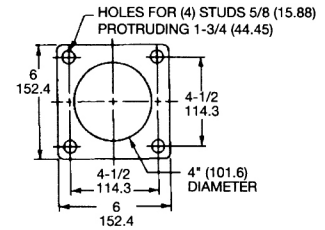
Suction Mounting Flange Dimensions



FLANGE A – WITHOUT SUPPORT STUD
FLANGE B – WITH SUPPORT STUD



FLANGE C



FLANGE D

PUMP DIMENSIONS IN INCHES (MM)

PUMP MODEL	HP	SUCTION MOUNTING FLANGE	DISCH.	G	H	J	K	L	M†	R	S
Series C35™ – 3500 RPM Centrifugal Pumps											
609	1/3-3/4	A	3/4 (19)	—	4 1/16 (103.2)	—	3 1/8 (79.4)	2 (50.8)	9 1/16 (230.2)	1 7/8 (47.6)	4 1/8 (104.8)
613	5		2 (50.8)	*7 1/2 (190.5)	5 1/4 (133.3)	4 3/4 (120.6)	4 1/8 (104.8)		9 3/8 (238.1)	2 5/8 (66.7)	6 1/4 (158.7)
614	5	D	2 1/2 (63.5)	6 3/4 (171.4)	6 3/4 (171.4)	10 1/4 (260.3)	4 5/8 (117.5)	3 (76.2)	12 1/2 (317.5)	9 9/16 (233.4)	12 7/8 (327)
616	1/3-2	A	1 1/2 (38.1)	6 (152.4)	5 1/4 (133.3)	4 3/4 (120.6)	4 (101.6)	2 (50.8)	9 1/4 (234.9)	2 1/8 (54)	5 (127)
617	3/4-3		9 3/8 (238.1)				6 1/4 (158.8)				
618	5-15		2 (50.8)				7 3/4 (196.9)				
620	1 1/2-7 1/2		**1 1/2 (38.1)				7 3/8 (187.3)				
625	3/4-5		*7 7/8 (193.7)				6 (152.4)				
626	3/4-3		2 (50.8)				6 (152.4)				
627	3		4 1/8 (104.8)				5 3/8 (136.5)				
Series C17™ – 1750 RPM Centrifugal Pumps											
650	1/3-1	A	1 1/2 (38.1)	*7 7/8 (193.7)	5 3/4 (146)	4 3/4 (120.6)	5 (127)	2 (50.8)	10 3/4 (273)	2 5/8 (66.7)	7 3/4 (196.8)
651	1-2		2 (50.8)								7 3/8 (187.3)
654	1 1/2-5	B	3 (76.2)	*11 1/4 (285.7)	8 (203.2)	12 3/4 (323.8)	5 3/8 (136.5)	3 3/8 (92.1)	15 1/8 (384.2)	8 3/8 (212.7)	
654	5	C									7 1/8 (181)
658	7 1/2-15	C	3 (76.2)	*11 1/4 (285.7)	9 1/2 (241.3)	12 3/4 (323.8)	6 3/4 (171.4)	2 (50.8)	16 1/8 (409.6)	8 3/8 (212.7)	
659	3-15	B			8 1/2 (215.9)						7 1/8 (180.1)
665	7 1/2-15	C	4 (101.6)	*8 3/8 (212.7)	8 7/8 (225.4)	14 3/8 (365.1)	8 (203.2)	3 3/8 (92.1)	17 1/2 (444.5)	6 3/4 (171.4)	10 1/2 (266.7)
673	3/4-5	A	2 (50.8)	7 7/8 (193.7)	7 (177.8)	4 3/4 (120.6)	6 3/4 (171.4)	2 (50.8)	12 3/4 (323.8)	2 5/8 (66.7)	7 1/8 (200)

*Flanged – dimension includes companion flange.

†Motor may extend beyond – add H + 1/2 (12.7) O.

Models 609, 616, and 617 available from stock for some conditions, see performance curves.

** 1 1/2" Discharge for below 60 GPM. 2" Discharge for 60 GPM and above.



Xylem Inc.
 8200 N. Austin Avenue
 Morton Grove, Illinois 60053
 Phone: (847) 966-3700
 Fax: (847) 965-8379
 www.bellgossett.com