

## PART LISTS

DHP-410-PL-E



Replacement Parts for  
**Domestic® Pump or Hoffman Specialty™  
Centriflo®**

Series C-17™ - 1750 RPM Pumps & Series C-35™ - 3500 RPM Pumps  
with Mechanical Seals  
Styles PF and PVF



**Bell & Gossett**

a xylem brand

# Index

How to Use this Parts List .....	Page 3
A Word About Obsolete Pumps .....	Page 4
Typical Cut-Away View of the 609 PF (1 & 3 Phase) .....	Page 5
Typical Cut-Away View of C-35 Pump and Motor Assembly .	Page 6
Typical Cut-Away View of C-17 Pump and Motor Assembly .	Page 7
<b>Series    Pump Combination    Motor RPM</b>	
C-35            609 PF            3500 .....	Page 8
C-35            613 PF            3500 .....	Page 9
C-35            614 PF            3500 .....	Page 10
C-35            616 PF            3500 .....	Page 11
C-35            617 PF            3500 .....	Page 12
C-35            618 PF            3500 .....	Page 13
C-35            620 PF            3500 .....	Page 14
C-35            625 PF            3500 .....	Page 15
C-35            626 PF            3500 .....	Page 16
C-35            627 PF            3500 .....	Page 17
C-17            650 PF            1750 .....	Page 18
C-17            651 PF            1750 .....	Page 19
C-17            654 PF            1750 .....	Page 20
C-17            658 PF            1750 .....	Page 21
C-17            659 PF            1750 .....	Page 22
C-17            665 PF            1750 .....	Page 23
C-17            673 PF            1750 .....	Page 24
Suction Flanges (PVF Components) All Pump Sizes .....	Page 25
Replacement Motor Selection Table .....	Page 26
Shaft Extension Mounting Dimensions .....	Page 27

# How to use this PARTS LIST

The unit nameplate identifies the pump by its pump combination number. Specific pump information is determined by identifying both the pump combination and the motor horsepower which is noted on the motor nameplate.

All model numbers identify the following information:

<b>DOMESTIC™</b>		
SERIES <b>CC™</b>		
MODEL <b>93CC</b>		
SERIAL <b>QD XXXX - XXXX</b>		
GPM <b>9</b>	PSI <b>30</b>	PUMP <b>616</b>
CFM	IN. HG.	PUMP
DWGS		
POWER V. <b>460</b>	PH. <b>3</b>	HZ <b>60</b>
CONTROL V. <b>115</b>	PH. <b>1</b>	HZ <b>60</b>
TOTAL F.L. AMP.	LARGEST MOTOR F.L. AMP.	
<b>Bell &amp; Gossett</b>		

<b>DOMESTIC™</b>		
SERIES <b>616PF™</b>	GPM <b>9</b>	
SERIAL <b>QR XXXX</b>	PSI <b>30</b>	
<b>Bell &amp; Gossett</b>		

The nameplates identify the pump in the examples as a 616 PF (Domestic Series C-35) rated for 9 GPM at 30 PSI. The larger nameplate notes that this pump has been furnished on a Series CC Condensate unit, Model Number 93 CC. The smaller nameplate identifies a pump that has been furnished separately.

The following procedure will result in proper parts selection:

1. Determine from the nameplate the pump combination and its capacity.
2. Refer to the motor nameplate to determine the correct motor horsepower.
3. Refer to the index to identify the appropriate page for parts selection.
4. For pumps that are available in multiple horsepower find the correct column on the pump combination page.
5. Using the referenced drawing for the pump, select the appropriate parts.
6. When ordering impellers, be sure to specify the required diameter on the order. If a diameter is not specified, a full size impeller will be furnished. *(Caution: Trimmed impellers may not be returned to the factory for credit.)* For impeller trims consult the appropriate full unit parts list.

# A Word About Obsolete Pumps

During the time that Domestic & Hoffman Pump Products have been offered, a number of design changes have occurred that necessitate the obsoleting of certain pump combinations. The following list attempts to address the more frequently requested pump identifications.

610 PF pumps were discontinued in 1984. At this printing, limited parts may still be obtained. Consult the factory or your representative for availability. Capacities formerly requiring the 610 PF are now handled by the 609 PF or the 616 PF. Use of the 609 PF requires a change in discharge location.

611 PF pumps were discontinued in 1975. No parts are available. Consult the factory or your representative for alternative replacement pump and motor assemblies.

612 PF pumps were discontinued in 1984. The 616 PF is a direct replacement. Parts from the current 616 PF pump are dimensionally interchangeable with the 612 PF parts.

613 PF pumps in 1½, 2 & 3 HP were discontinued in 1984. At this printing limited parts may still be obtained. Consult the factory or your representative for availability.

614 PF pumps in 3 HP were discontinued in 1984. At this printing, limited parts may still be obtained. Consult the factory or your representative for availability.

615 PF pumps were discontinued in 1975. No parts are available. Consult the factory or your representative for alternative replacement pump and motor assemblies.

627 PF pumps in 2 HP were discontinued in 1984. At this printing, limited parts may still be obtained. Consult the factory or your representative for availability.

650 PF pumps in 1½ & 2 HP were discontinued in 1990. At this printing, limited parts may still be obtained. Consult the factory or your representative for availability.

651 PF pumps in ¾ HP were discontinued in 1990. At this printing, limited parts may still be obtained. Consult the factory or your representative for availability.

653 PF pumps were discontinued in 1992. The 673 PF is a direct replacement. Parts from the current 673 PF pump are dimensionally interchangeable with the 653 PF parts.

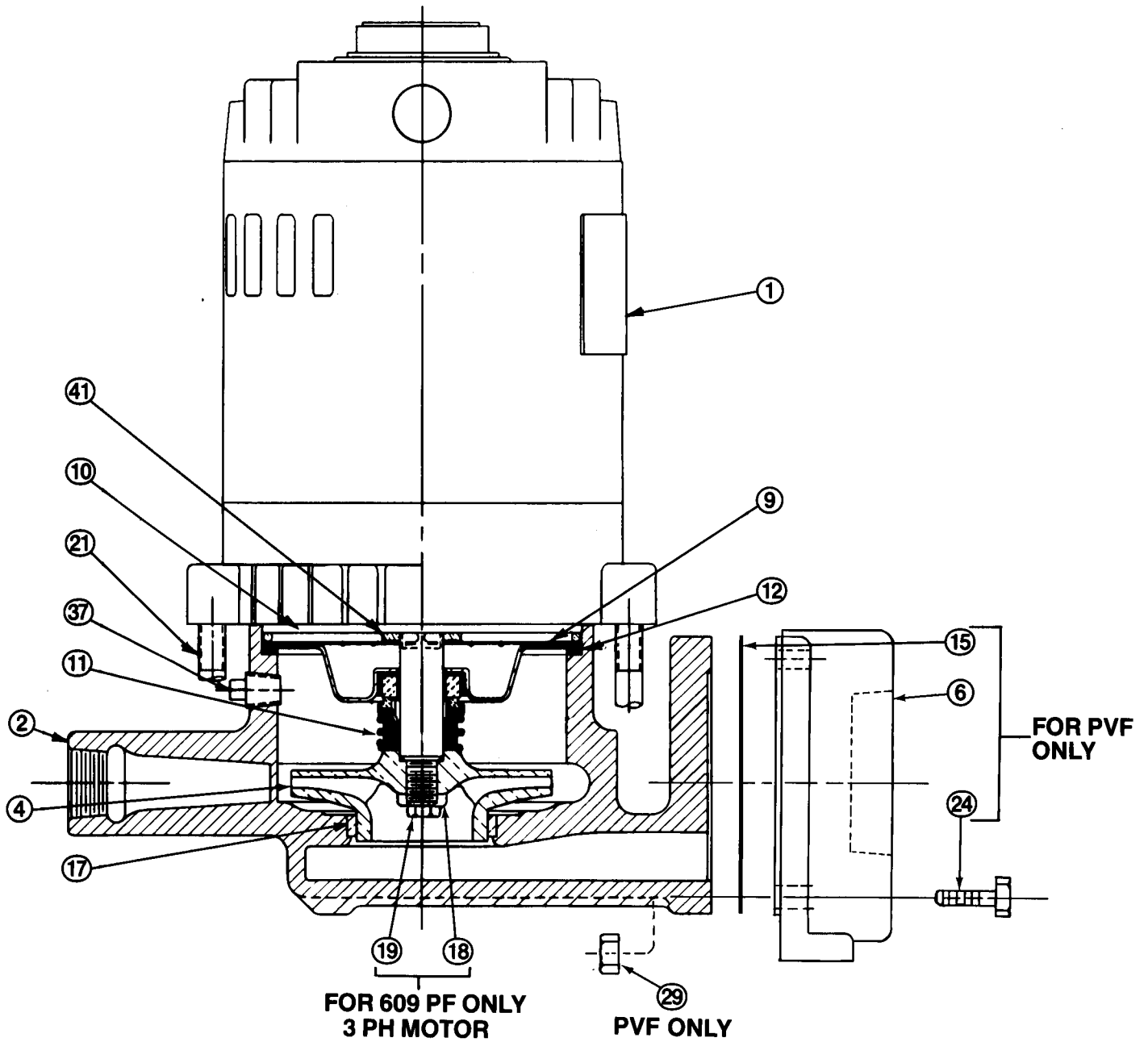
655 PF pumps were discontinued in 1988. At this printing, limited parts may still be obtained. Volutes and impellers are ordered on an as required/non-cancelable basis with extended lead-times. Consult the factory or your representative for parts availability. Consult the factory or your representative for alternative replacement pump and motor assemblies.

657 PF pumps were discontinued in 1992. The 673 PF is a direct replacement. Parts from the current 673 PF pump are dimensionally interchangeable with the 657 PF parts.

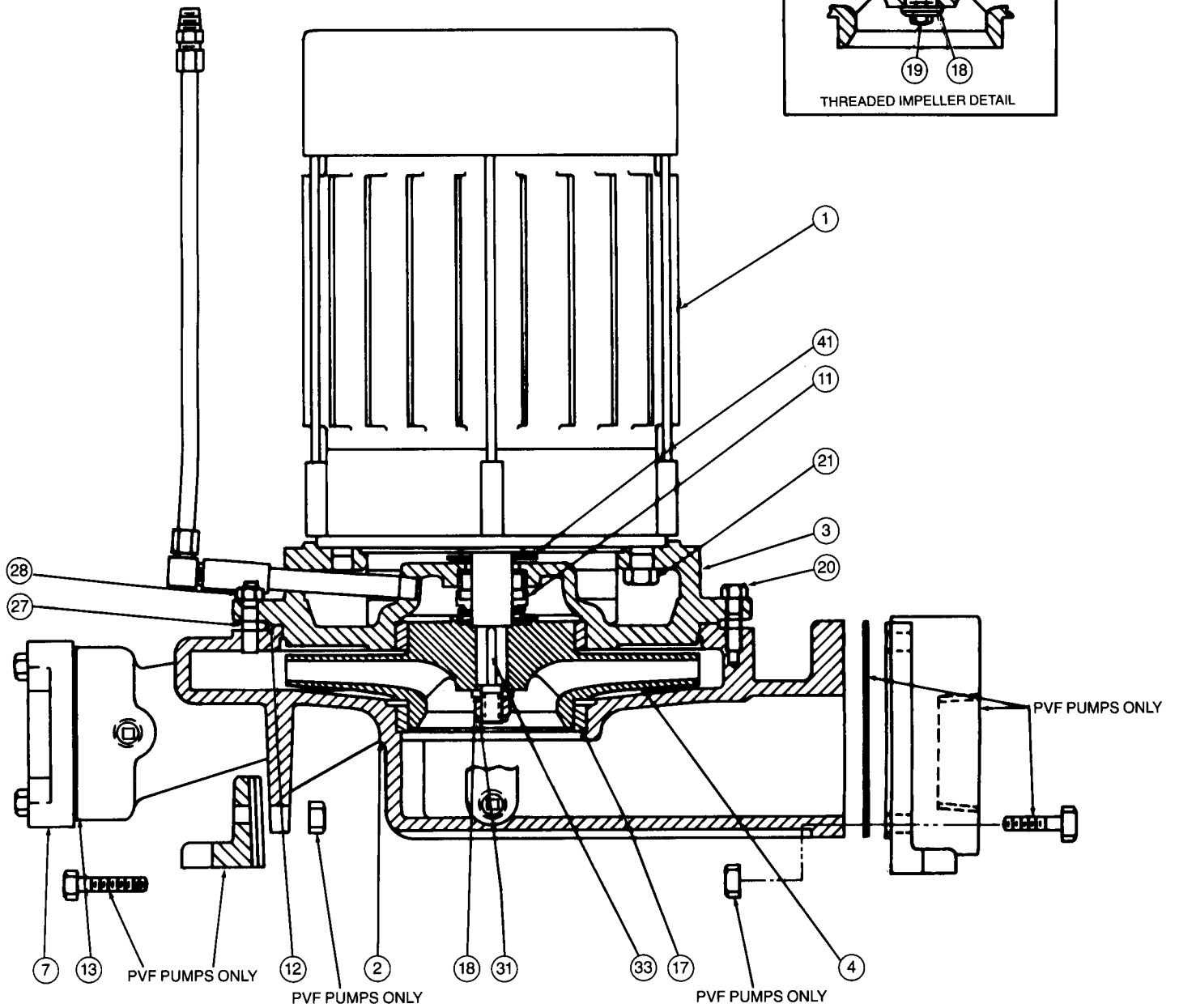
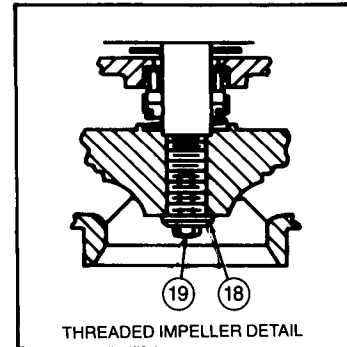
664 PF pumps were discontinued in 1988. At this printing, limited parts may still be obtained. Volutes and impellers are ordered on an as required/non-cancelable basis with extended lead-times. Consult the factory or your representative for parts availability. Consult the factory or your representative for alternative replacement pump and motor assemblies.

666 PF pumps were discontinued in 1988. At this printing, limited parts may still be obtained. Volutes and impellers are ordered on an as required/non-cancelable basis with extended lead-times. Consult the factory or your representative for parts availability. Consult the factory or your representative for alternative replacement pump and motor assemblies.

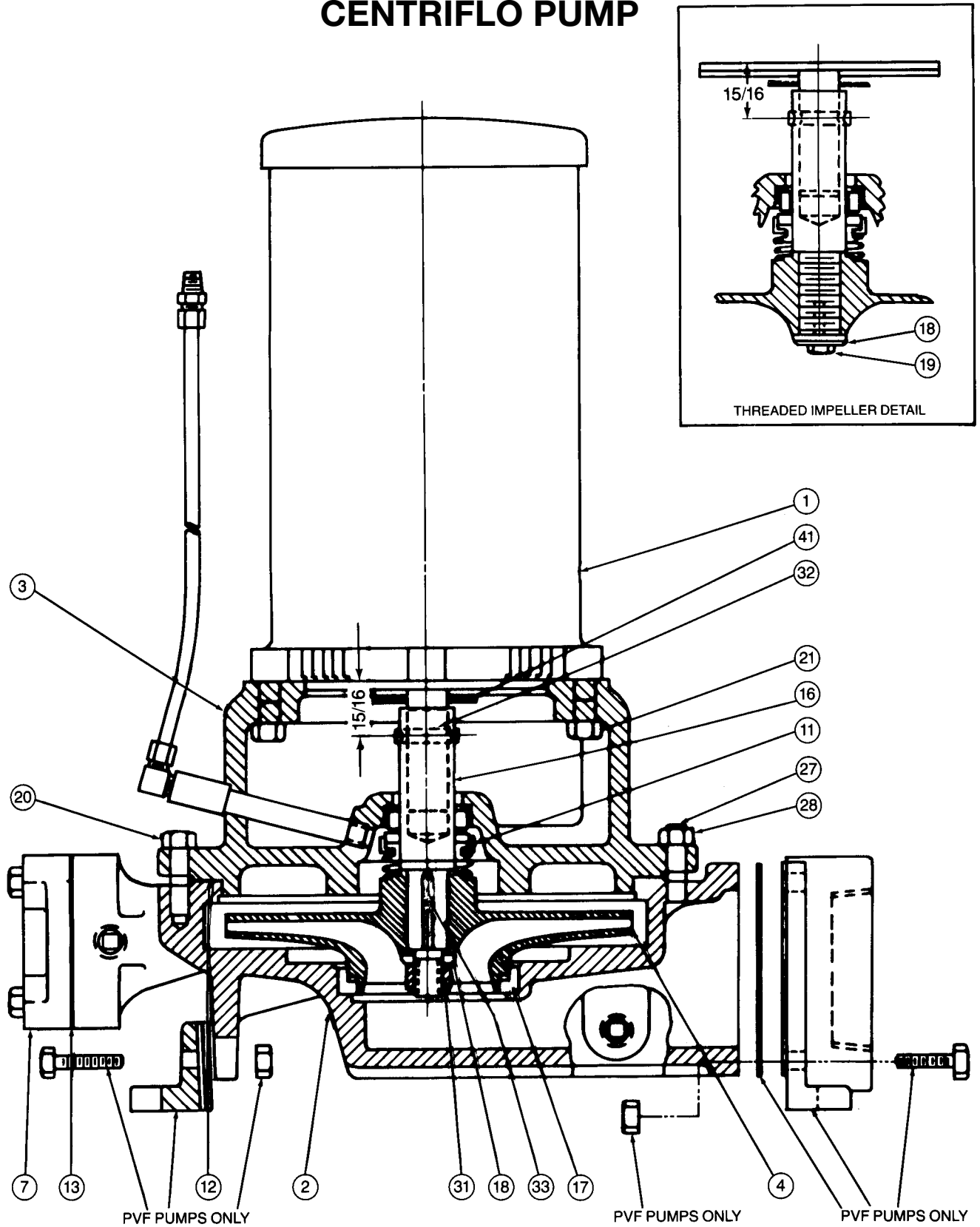
# SERIES C35™ – 3500 RPM TYPE 609 PF CENTRIFLO



# SERIES C35™ – 3500 RPM CENTRIFLO PUMP



# SERIES C17 - 1750 RPM CENTRIFLO PUMP



## 609 PF (C-35)

ITEM NO.	DESCRIPTION	1 PHASE <sup>2</sup>	3 PHASE <sup>3</sup>
9	Seal Holder	DP0290	DP0290
11	Seal	DP0304	DP0304
4	Impeller <sup>1</sup>	DP0321	DP0321
12	Head Gasket	DG0092	DG0092
2	Volute with Wearing Ring	DP1665	DP1665
21	Capscrew	DJ0083	DJ0083
17	Wearing Ring	DP0482	DP0482
37	Pipe Plug 1/4"	P39040	P39040
10	Wire Spacer	DP0291	DP0291
41	Water Slinger	DP0848	DP0848
19	Impeller Capscrew	not applicable	DJ0213
18	Impeller Washer	not applicable	DJ0259
	Seal and Gasket Kit	180013	180013

— Shaded items are Recommended Spare Parts.

<sup>1</sup> Specify required diameter when ordering. If diameter is not specified full diameter will be furnished.

<sup>2</sup> Parts may be used for 180001 Stock Pump.

<sup>3</sup> Parts may be used for 180025 Stock Pump.



## 613 PF (C-35)

ITEM NO.	DESCRIPTION	5 HP
4	Impeller (ref. unit description for proper trim size)	DP0314 <sup>1</sup>
3	Motor Bracket	DP0212
2	Volute with Wear Ring	DP1624
7	Companion Flange	DF0678
11	Seal & Gasket Kit	180011
17	Wear Ring	DP0483
18	Impeller Washer	DJ0280
12	Volute Gasket	DG0087
13	Companion Flange Gasket	DG0141
19	Impeller Capscrew	not applicable
41	Water Slinger	DP0851
16	Shaft Extension	not applicable
32	Locking Pin	not applicable
33	Impeller Key	DP0586
31	Stop Nut	DJ0243
5	Suction Housing	—
14	Suction Housing Gasket	—
42	Shaft Washer	—

— Shaded items are Recommended Spare Parts.

<sup>1</sup> Specify required diameter when ordering. If diameter is not specified full diameter will be furnished.

## 614 PF (C-35)

ITEM NO.	DESCRIPTION	5 HP
4	Impeller (ref. unit description for proper trim size)	DP0326 <sup>1</sup>
3	Motor Bracket	DP0212
2	Volute with Wear Ring	DP1632
7	Companion Flange	DF0483
11	Seal & Gasket Kit	180011
17	Wear Ring	DP0484
18	Impeller Washer	DJ0280
12	Volute Gasket	DG0087
13	Companion Flange Gasket	DG0142
19	Impeller Capscrew	not applicable
41	Water Slinger	DP0851
16	Shaft Extension	not applicable
32	Locking Pin	not applicable
33	Impeller Key	DP0586
31	Stop Nut	DJ0243
5	Suction Housing	DP0696
14	Suction Housing Gasket	DG0165
42	Shaft Washer	—

— Shaded items are Recommended Spare Parts.

<sup>1</sup> Specify required diameter when ordering. If diameter is not specified full diameter will be furnished.

## 616 PF (C-35)

ITEM NO.	DESCRIPTION	1/2 - 2 HP <sup>2</sup>
4	Impeller (ref. unit description for proper trim size)	DP0336 <sup>1</sup>
3	Motor Bracket	DP0208
2	Volute with Wear Ring	DP1603
7	Companion Flange	—
11	Seal & Gasket Kit	180014
17	Wear Ring	DP0482
18	Impeller Washer	DJ0267
12	Volute Gasket	DG0086
13	Companion Flange Gasket	—
19	Impeller Capscrew	DJ0213
41	Water Slinger	DP0848
16	Shaft Extension	—
32	Locking Pin	—
33	Impeller Key	—
31	Stop Nut	—
5	Suction Housing	—
14	Suction Housing Gasket	—
42	Shaft Washer	—

— Shaded items are Recommended Spare Parts.

<sup>1</sup> Specify required diameter when ordering. If diameter is not specified full diameter will be furnished.

<sup>2</sup> Parts may be used for 3/4 HP 180026 & 1HP 180027.

## 617 PF (C-35)

ITEM NO.	DESCRIPTION	<sup>3/4</sup> - 2 HP <sup>2</sup>	3 HP
4	Impeller (ref. unit description for proper trim size)	DP0346 <sup>1</sup>	DP0348 <sup>1</sup>
3	Motor Bracket	DP0216	DP0214
2	Volute with Wear Ring	DP1604	DP1604
7	Companion Flange	—	—
11	Seal & Gasket Kit	180014	180010
17	Wear Ring	DP0482	DP0482
18	Impeller Washer	DJ0267	DJ0275
12	Volute Gasket	DG0087	DG0087
13	Companion Flange Gasket	—	—
19	Impeller Capscrew	DJ0213	DJ0026
41	Water Slinger	DP0848	DP0849
16	Shaft Extension	—	—
32	Locking Pin	—	—
33	Impeller Key	—	—
31	Stop Nut	—	—
5	Suction Housing	—	—
14	Suction Housing Gasket	—	—
42	Shaft Washer	—	—

— Shaded items are Recommended Spare Parts.

<sup>1</sup> Specify required diameter when ordering. If diameter is not specified full diameter will be furnished.

<sup>2</sup> Parts may be used for 180001 Stock Pump.

<sup>3</sup> Parts may be used for 180025 Stock Pump.

## 618 PF (C-35)

ITEM NO.	DESCRIPTION	5 & 7 <sup>1</sup> / <sub>2</sub> HP	10 & 15 HP
4	Impeller (ref. unit description for proper trim size)	DP0354 <sup>1</sup>	DP0352 <sup>1</sup>
3	Motor Bracket	DP1663	DP1663
2	Volute with Wear Ring	DP1630	DP1630
7	Companion Flange	DF0678	DF0678
11	Seal & Gasket Kit	180011	180011
17	Wear Ring	DP0484	DP0484
18	Impeller Washer	DJ0280	DJ0281
12	Volute Gasket	DG0089	DG0089
13	Companion Flange Gasket	DG0141	DG0141
19	Impeller Capscrew	not applicable	not applicable
41	Water Slinger	DP0851	DP0851
16	Shaft Extension	not applicable	not applicable
32	Locking Pin	not applicable	not applicable
33	Impeller Key	DP0586	DP0587
31	Stop Nut	DJ0243	DJ0243
5	Suction Housing	—	—
14	Suction Housing Gasket	—	—
42	Shaft Washer	—	DJ0290

— Shaded items are Recommended Spare Parts.

<sup>1</sup> Specify required diameter when ordering. If diameter is not specified full diameter will be furnished.

## 620 PF (C-35)

ITEM NO.	DESCRIPTION	2 HP	3 HP
4	Impeller (ref. unit description for proper trim size)	DP3363 <sup>1,2</sup>	DP3363 <sup>1,2</sup>
3	Motor Bracket	DP0230	DP1660
2	Volute with Wear Ring	DP3366	DP3366
7	Companion Flange	DF0676	DF0676
11	Seal & Gasket Kit	180011	180010
17	Wear Ring	DP3365	DP3365
18	Impeller Washer	DJ0275	DJ0275
12	Volute Gasket	DG0089	DG0089
13	Companion Flange Gasket	DG0141	DG0141
19	Impeller Capscrew	DJ0026	DJ0026
41	Water Slinger	DP0848	DP0849
16	Shaft Extension	DP0784	not applicable
32	Locking Pin	DJ0450	not applicable
33	Impeller Key	—	—
31	Stop Nut	not applicable	not applicable
5	Suction Housing	—	—
14	Suction Housing Gasket	—	—
42	Shaft Washer	—	—

— Shaded items are Recommended Spare Parts.

<sup>1</sup> Specify required diameter when ordering. If diameter is not specified full diameter will be furnished.

<sup>2</sup> Replace both wear ring and impeller for Units manufactured before May, 1991.

## 620 PF (C-35)

ITEM NO.	DESCRIPTION	5 & 7 1/2 HP
4	Impeller (ref. unit description for proper trim size)	DP3364 <sup>1,2</sup>
3	Motor Bracket	DP1661
2	Volute with Wear Ring	DP3366
7	Companion Flange	DF0676
11	Seal & Gasket Kit	180011
17	Wear Ring	DP3365
18	Impeller Washer	DJ0280
12	Volute Gasket	DG0089
13	Companion Flange Gasket	DG0141
19	Impeller Capscrew	not applicable
41	Water Slinger	DP0851
16	Shaft Extension	not applicable
32	Locking Pin	not applicable
33	Impeller Key	DP0586
31	Stop Nut	DJ0243
5	Suction Housing	—
14	Suction Housing Gasket	—
42	Shaft Washer	—

— Shaded items are Recommended Spare Parts.

<sup>1</sup> Specify required diameter when ordering. If diameter is not specified full diameter will be furnished.

<sup>2</sup> Replace both wear ring and impeller for Units manufactured before May, 1991.

## 625 PF (C-35)

ITEM NO.	DESCRIPTION	3/4-2 HP	3 HP
4	Impeller (ref. unit description for proper trim size)	DP0380 <sup>1</sup>	DP0382 <sup>1</sup>
3	Motor Bracket	DP0208	DP0210
2	Volute with Wear Ring	DP1631	DP1631
7	Companion Flange	DF0678	DF0678
11	Seal & Gasket Kit	180014	180010
17	Wear Ring	DP0484	DP0484
18	Impeller Washer	DJ0267	DJ0275
12	Volute Gasket	DG0086	DG0086
13	Companion Flange Gasket	DG0141	DG0141
19	Impeller Capscrew	DJ0213	DJ0026
41	Water Slinger	DP0848	DP0849
16	Shaft Extension	—	—
32	Locking Pin	—	—
33	Impeller Key	—	—
31	Stop Nut	—	—
5	Suction Housing	—	—
14	Suction Housing Gasket	—	—
42	Shaft Washer	—	—

— Shaded items are Recommended Spare Parts.

<sup>1</sup> Specify required diameter when ordering. If diameter is not specified full diameter will be furnished.

## 625 PF (C-35)

ITEM NO.	DESCRIPTION	5 HP
4	Impeller (ref. unit description for proper trim size)	DP0384 <sup>1,2</sup>
3	Motor Bracket	DP0226
2	Volute with Wear Ring	DP1631
7	Companion Flange	DF0678
11	Seal & Gasket Kit	180011
17	Wear Ring	DP0484
18	Impeller Washer	DJ0280
12	Volute Gasket	DG0086
13	Companion Flange Gasket	DG0141
19	Impeller Capscrew	not applicable
41	Water Slinger	DP0851
16	Shaft Extension	—
32	Locking Pin	—
33	Impeller Key	DP0586
31	Stop Nut	DJ0243
5	Suction Housing	—
14	Suction Housing Gasket	—
42	Shaft Washer	—
Misc	Spring Holder Ring	DP3583 <sup>1,2</sup>

— Shaded items are Recommended Spare Parts.

<sup>1</sup> Specify required diameter when ordering. If diameter is not specified full diameter will be furnished.

<sup>2</sup> Order Spring Holder Ring with impeller for units manufactured before 11/1/1992.

## 626 PF (C-35)

ITEM NO.	DESCRIPTION	<sup>3</sup> / <sub>4</sub> - 2 HP	3 HP
4	Impeller (ref. unit description for proper trim size)	DP0390 <sup>1</sup>	DP0392 <sup>1</sup>
3	Motor Bracket	DP0208	DP0210
2	Volute with Wear Ring	DP1626	DP1626
7	Companion Flange	DF0678	DF0678
11	Seal & Gasket Kit	180014	180010
17	Wear Ring	DP0483	DP0483
18	Impeller Washer	DJ0267	DJ0275
12	Volute Gasket	DG0086	DG0086
13	Companion Flange Gasket	DG0141	DG0141
19	Impeller Capscrew	DJ0213	DJ0026
41	Water Slinger	DP0848	DP0849
16	Shaft Extension	—	—
32	Locking Pin	—	—
33	Impeller Key	—	—
31	Stop Nut	—	—
5	Suction Housing	—	—
14	Suction Housing Gasket	—	—
42	Shaft Washer	—	—

— Shaded items are Recommended Spare Parts.

<sup>1</sup> Specify required diameter when ordering. If diameter is not specified full diameter will be furnished.



**627 PF (C-35)**

<b>ITEM NO.</b>	<b>DESCRIPTION</b>	<b>3 HP</b>
4	Impeller (ref. unit description for proper trim size)	DP0400 <sup>1</sup>
3	Motor Bracket	DP0214
2	Volute with Wear Ring	DP1610
7	Companion Flange	DF0678
11	Seal & Gasket Kit	180010
17	Wear Ring	DP0486
18	Impeller Washer	DJ0275
12	Volute Gasket	DG0087
13	Companion Flange Gasket	DG0141
19	Impeller Capscrew	DJ0026
41	Water Slinger	DP0849
16	Shaft Extension	—
32	Locking Pin	—
33	Impeller Key	—
31	Stop Nut	—
5	Suction Housing	—
14	Suction Housing Gasket	—
42	Shaft Washer	—

— Shaded items are Recommended Spare Parts.

<sup>1</sup> Specify required diameter when ordering. If diameter is not specified full diameter will be furnished.

## 650 PF (C17)

ITEM NO.	DESCRIPTION	1/3 - 1/2 HP	3/4 - 1 HP
4	Impeller (ref. unit description for proper trim size)	DP1964 <sup>1,2</sup>	DP3363 <sup>1,2</sup>
3	Motor Bracket	DP0228	DP0230
2	Volute with Wear Ring	DP3366	DP3366
7	Companion Flange	DF0676	DF0676
11	Seal & Gasket Kit	180014	180011
17	Wear Ring	DP3365	D3365
18	Impeller Washer	DJ0267	DJ0275
12	Volute Gasket	DG0089	DG0089
13	Companion Flange Gasket	DG0141	DG0141
19	Impeller Capscrew	DJ0213	DJ0026
41	Water Slinger	DP0848	DP0848
16	Shaft Extension	not applicable	DP0784
32	Locking Pin	not applicable	DJ0450
33	Impeller Key	—	—
31	Stop Nut	—	—

— Shaded items are Recommended Spare Parts.

<sup>1</sup> Specify required diameter when ordering. If diameter is not specified full diameter will be furnished.

<sup>2</sup> For units manufactured after 1992. Units manufactured before 1992 should replace impeller and wearing ring as a pair. Units manufactured before 1992 needing wearing ring only should order DP0483. Old style impellers no longer available.

## 651 PF (C17)

ITEM NO.	DESCRIPTION	1 HP	1 1/2 - 2 HP
4	Impeller (ref. unit description for proper trim size)	DP0424 <sup>1</sup>	DP0424 <sup>1</sup>
3	Motor Bracket	DP0230	DP0230
2	Volute with Wear Ring	DP1630	DP1630
7	Companion Flange	DF0678	DF0678
11	Seal & Gasket Kit	180011	180011
17	Wear Ring	DP0484	DP0484
18	Impeller Washer	DJ0280	DJ0280
12	Volute Gasket	DG0089	DG0089
13	Companion Flange Gasket	DG0141	DG0141
19	Impeller Capscrew	not applicable	not applicable
41	Water Slinger	DP0848	DP0849
16	Shaft Extension	DP0790	DP0788
32	Locking Pin	DJ0450	DJ0444
33	Impeller Key	DP0586	DP0586
31	Stop Nut	DJ0243	DJ0243

— Shaded items are Recommended Spare Parts.

<sup>1</sup> Specify required diameter when ordering. If diameter is not specified full diameter will be furnished.

## 654 PF (C17)

ITEM NO.	DESCRIPTION	1½ - 2 HP	3 - 5 HP
4	Impeller (ref. unit description for proper trim size)	DP0432 <sup>1</sup>	DP0432 <sup>1</sup>
3	Motor Bracket	DP0240	DP0236
2	Volute with Wear Ring	DP1618	DP1618
7	Companion Flange	DF0481	DF0481
11	Seal & Gasket Kit	180011	180011
17	Wear Ring	DP0488	DP0488
18	Impeller Washer	DJ0280	DJ0280
12	Volute Gasket	DG0083	DG0083
13	Companion Flange Gasket	DG0142	DG0142
19	Impeller Capscrew	not applicable	not applicable
41	Water Slinger	DP0849	DP0851
16	Shaft Extension	DP0788	not applicable
32	Locking Pin	DJ0444	not applicable
33	Impeller Key	DP0586	DP0586
31	Stop Nut	DJ0243	DJ0243

## 654 PF-VAC (C17)

*FOR VACUUM PUMP ONLY – USED ON 100 & 150 VC & VCD UNITS  
OR 100 S (OR D) 5-17 MJ UNITS*

ITEM NO.	DESCRIPTION	5 HP - VAC
4	Impeller (ref. unit description for proper trim size)	DP0432 <sup>1</sup>
3	Motor Bracket	DP0236
2	Volute with Wear Ring	DP1668
7	Companion Flange	DF0481
11	Seal & Gasket Kit	180011
17	Wear Ring	DP0488
18	Impeller Washer	DJ0280
12	Volute Gasket	DG0083
13	Companion Flange Gasket	DG0142
19	Impeller Capscrew	not applicable
41	Water Slinger	DP0851
16	Shaft Extension	not applicable
32	Locking Pin	not applicable
33	Impeller Key	DP0586
31	Stop Nut	DJ0243

— Shaded items are Recommended Spare Parts.

<sup>1</sup> Specify required diameter when ordering. If diameter is not specified full diameter will be furnished.

## 658 PF (C17)

ITEM NO.	DESCRIPTION	7 <sup>1</sup> / <sub>2</sub> - 15 HP VAC
4	Impeller (ref. unit description for proper trim size)	DP0448 <sup>1</sup>
3	Motor Bracket	DP1662
2	Volute with Wear Ring	DP1614
7	Companion Flange	DF0481
11	Seal & Gasket Kit	180015
17	Wear Ring	DP0489
18	Impeller Washer	DJ0286
12	Volute Gasket	DG0084
13	Companion Flange Gasket	DG0142
19	Impeller Capscrew	not applicable
41	Water Slinger	DP0853
16	Shaft Extension	not applicable
32	Locking Pin	not applicable
33	Impeller Key	DP0596
31	Stop Nut	DJ0215

■ — Shaded items are Recommended Spare Parts.

<sup>1</sup> Specify required diameter when ordering. If diameter is not specified full diameter will be furnished.

## 659 PF (C17)

ITEM NO.	DESCRIPTION	3 - 5 HP	7 <sup>1</sup> / <sub>2</sub> - 15 HP
4	Impeller (ref. unit description for proper trim size)	DP0455 <sup>1</sup>	DP0454 <sup>1</sup>
3	Motor Bracket	DP1655	DP1656
2	Volute with Wear Ring	DP1619	DP1619
7	Companion Flange	DF0481	DF0481
11	Seal & Gasket Kit	180011	180015
17	Wear Ring	DP0488	DP0488
18	Impeller Washer	DJ0280	DJ0286
12	Volute Gasket	DG0084	DG0084
13	Companion Flange Gasket	DG0142	DG0142
19	Impeller Capscrew	not applicable	not applicable
41	Water Slinger	DP0851	DP0853
16	Shaft Extension	not applicable	not applicable
32	Locking Pin	not applicable	not applicable
33	Impeller Key	DP0586	DP0596
31	Stop Nut	DJ0243	DJ0215

— Shaded items are Recommended Spare Parts.

<sup>1</sup> Specify required diameter when ordering. If diameter is not specified full diameter will be furnished.

**665 PF (C17)**

ITEM NO.	DESCRIPTION	7 <sup>1</sup> / <sub>2</sub> - 15 HP
4	Impeller (ref. unit description for proper trim size)	DP0470 <sup>1</sup>
3	Motor Bracket	DP1664
2	Volute with Wear Ring	DP1613
7	Companion Flange	DL1449
11	Seal & Gasket Kit	180015
17	Wear Ring	DP0490
18	Impeller Washer	DJ0286
12	Volute Gasket	DG0084
13	Companion Flange Gasket	DG0157
19	Impeller Capscrew	not applicable
41	Water Slinger	DP0853
16	Shaft Extension	not applicable
32	Locking Pin	not applicable
33	Impeller Key	DP0596
31	Stop Nut	DJ0215

— Shaded items are Recommended Spare Parts.

<sup>1</sup> Specify required diameter when ordering. If diameter is not specified full diameter will be furnished.

## 673 PF (C-17)

ITEM NO.	DESCRIPTION	1½ - 2 HP <sup>2</sup>	3 - 5 HP
4	Impeller (ref. unit description for proper trim size)	DP3540 <sup>1</sup>	DP3540 <sup>1</sup>
3	Motor Bracket	DP0234	DP0232
2	Volute with Wear Ring	DP1609	DP1609
7	Companion Flange	DF0678	DF0678
11	Seal & Gasket Kit	180011	180011
17	Wear Ring	DP0486	DP0486
18	Impeller Washer	DJ0280	DJ0280
12	Volute Gasket	DG0090	DG0090
13	Companion Flange Gasket	DG0141	DG0141
19	Impeller Capscrew	not applicable	not applicable
41	Water Slinger	DP0849	DP0851
16	Shaft Extension	DP0788	not applicable
32	Locking Pin	DJ0444	not applicable
33	Impeller Key	DP0586	DP0586
31	Stop Nut	DJ0243	DJ0243

■ — Shaded items are Recommended Spare Parts.

<sup>1</sup> Specify required diameter when ordering. If diameter is not specified full diameter will be furnished.

<sup>2</sup> When repairing 653 or 657 PF 1 HP pumps – consult factory.



**Footed Suction Flange Kit for 609 PF (1 1/2")**

DESCRIPTION	PART #	QTY.
Complete Kit	180023	1
Kit Components	—	—
Suction Flange Gasket	DG0060	1
Volute Foot	DM0420	1
Suction Flange	DP0948	1
Capscrew (vol. foot)	DJ0066	1
Hex Nut	F11400	4
Capscrew (suc. flnge)	P01260	4

**Footed Suction Flange Components (2") (616, 617 Pumps)**

DESCRIPTION	PART #	QTY.
Complete Kit	180038	1
Kit Components	—	—
Suction Flange Gasket	DG0060	1
Stud	DJ0478	1
Capscrew	P01260	4
Hex Nut	F11400	5
Support Foot	DM0420	1
Suction Flange	DP0998	1

**Footed Suction Flange Components (2 1/2") (613, 620, 650 & 651 Pumps)**

DESCRIPTION	PART #	QTY.
Complete Kit	180039	1
Kit Components	—	—
Suction Flange Gasket	DG0060	1
Stud	DJ0478	1
Capscrew	P01260	4
Hex Nut	F11400	5
Support Foot	DM0418	1
Suction Flange	DP0992	1

**Footed Suction Flange Components (3") (618 Pumps)**

DESCRIPTION	PART #	QTY.
Complete Kit	180040	1
Kit Components	—	—
Suction Flange Gasket	DG0060	1
Stud	DJ0111	1
Capscrew	H28500	4
Hex Nut	F11400	4
Support Foot	DM0418	1
Suction Flange	DP0996	1

**Footed Suction Flange Components (4") (614 PF Pumps)**

DESCRIPTION	PART #	QTY.
Complete Kit	180041	1
Kit Components	—	—
Suction Flange Gasket	DG0157	1
Stud	DJ0111	1
Capscrew	P19480	4
Hex Nut	DJ0232	4
Support Foot	DM0418	1
Suction Flange*	DP0950	1

\*DP0994, DG0060, DJ0478(5), F11400(5), DM0418 used for 654PF & 659PF w/"B" flange.

## REPLACEMENT MOTOR IDENTIFICATION CHART

HP & ENCLOSURE	PUMP TYPE						
	C-17,1 PHASE 1750 RPM	C-17,3 PHASE 1750 RPM	C-35,1 PHASE 3500 RPM	C-35,3 PHASE 3500 RPM	HB17 1750 RPM	B35,1 PHASE 3500 RPM	B35 & HB35,3 PHASE 3500 RPM
1/3 hp, ODP	DM0007	DM0004	DM0005	DM0010	N/A	DM0422	DM0010
1/2 hp, ODP	DM0022	DM0034	DM0020	DM0029	N/A	DM0423	DM0029
1/2 hp, 575v, ODP	N/A	N/A	N/A	DM0231	N/A	N/A	DM0231
3/4 hp, ODP	DM0041	DM0050	DM0040	DM0045	N/A	DM0424	DM0045
3/4 hp, 575v, ODP	N/A	N/A	N/A	DM0232	N/A	N/A	DM0232
1 hp, ODP	DM0056	DM0067	DM0055	DM0060	N/A	DM0425	DM0060
1 hp, 575v, ODP	N/A	N/A	N/A	DM0233	N/A	N/A	DM0233
1 1/2 hp, ODP	DM0071	DM0080	DM0070	DM0076	N/A	DM0426	DM0076
1 1/2 hp, 575v, ODP	N/A	N/A	N/A	DM0234	N/A	N/A	DM0234
2 hp, ODP	DM0091	DM0101	DM0090	DM0096	N/A	DM0427	DM0096
3 hp, ODP	N/A	DM0118	N/A	DM0119	N/A	N/A	DM0119
5 hp, ODP	N/A	DM0139	N/A	DM0140	DM0139	N/A	DM0140
7 1/2 hp, ODP	N/A	DM0152	N/A	DM0153	DM0152	N/A	DM0153
10 hp, ODP	N/A	DM0159	N/A	DM0170	DM0159	N/A	DM0170
15 hp, ODP	N/A	DM0185	N/A	DM0180	DM0185	N/A	DM0180
TEFC	C-17,1 PHASE 1750 RPM	C-17,3 PHASE 1750 RPM	C-35,1 PHASE 3500 RPM	C-35,3 PHASE 3500 RPM	HB17 1750 RPM	B35,1 PHASE 3500 RPM	B35 & HB35,3 PHASE 3500 RPM
1/3 hp, TEFC	SPECIAL	SPECIAL	DM0017	DM0018	N/A	DM0017	DM0018
1/2 hp, TEFC	DM0028	DM0033	DM0023	DM0037	N/A	DM0428	DM0037
3/4 hp, TEFC	SPECIAL	DM0052	DM0038	DM0053	N/A	DM0429	DM0053
1 hp, TEFC	SPECIAL	DM0066	DM0054	DM0064	N/A	DM0430	DM0064
1 1/2 hp, TEFC	SPECIAL	DM0085	DM0084	DM0078	N/A	DM0431	DM0078
2 hp, TEFC	SPECIAL	DM0100	DM0089	DM0099	N/A	DM0432	DM0099
3 hp, TEFC	N/A	DM0117	N/A	DM0116	N/A	N/A	DM0116
5 hp, TEFC	N/A	DM0134	N/A	DM0222	DM0134	N/A	DM0222
7 1/2 hp, TEFC	N/A	DM0147	N/A	DM0224	DM0147	N/A	DM0224
10 hp, TEFC	N/A	DM0226	N/A	DM0167	DM0226	N/A	DM0167
15 hp, TEFC	N/A	DM0186	N/A	DM0184	DM0186	N/A	DM0184

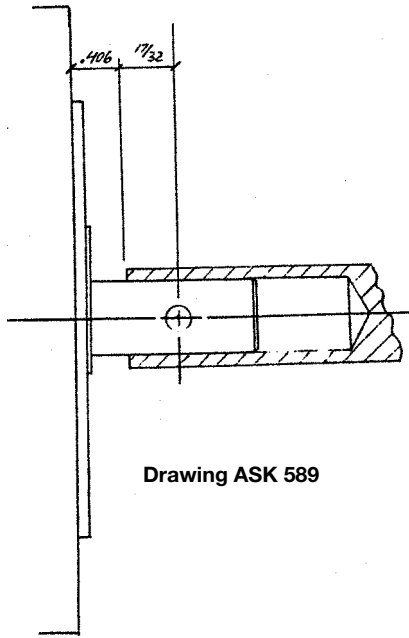
Check **ITT Bell & Gossett Motor Status Listing** for current stock status. M/O's require extended leadtimes.

**Note:** 620 PF, PVF (C-35) & 620 PF-B, PVF-B (B-35) Pumps require shaft extensions.

**Note:** C-17 (3/4 HP through 2 HP) Pumps require shaft extensions.

**Shaft extensions and Drive-loc pins must be ordered as separate items.**

### Mounting Location for Shaft Extensions



Drawing ASK 589

# Xylem |'zīləm|

- 1) The tissue in plants that brings water upward from the roots;
- 2) a leading global water technology company.

We're 12,700 people unified in a common purpose: creating innovative solutions to meet our world's water needs. Developing new technologies that will improve the way water is used, conserved, and re-used in the future is central to our work. We move, treat, analyze, and return water to the environment, and we help people use water efficiently, in their homes, buildings, factories and farms. In more than 150 countries, we have strong, long-standing relationships with customers who know us for our powerful combination of leading product brands and applications expertise, backed by a legacy of innovation.

**For more information on how Xylem can help you, go to [www.xyleminc.com](http://www.xyleminc.com)**



Xylem Inc.  
8200 N. Austin Avenue  
Morton Grove, Illinois 60053  
Phone: (847) 966-3700  
Fax: (847) 965-8379  
[www.bellgossett.com](http://www.bellgossett.com)