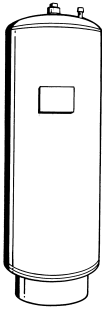


JOB:	REPRESENTATIVE:	
UNIT TAG:	ORDER NO.	DATE:
ENGINEER:	SUBMITTED BY:	DATE:
CONTRACTOR:	APPROVED BY:	DATE:



Series "D" (ASME) Pressurized Expansion Tanks Vertical with Sight Glass and Seismic Restraints

Not For Potable Water Systems

DESCRIPTION

Series "D" expansion tanks are ASME rated precharged diaphragm-type pressure vessels. The Series "D" tank is designed to absorb the expansion forces of heating/cooling system water while maintaining proper system pressurization under varying operating conditions. The heavy duty diaphragm separates system water from the tank air charge thereby eliminating waterlogging problems.

CONSTRUCTION

Shell: Carbon Steel
 Diaphragm: Heavy Duty Butyl Rubber
 System Connection: Forged Steel
 Designed and Constructed per ASME Section VIII, Division 1

PERFORMANCE LIMITATIONS

Maximum Design Pressure: 125 PSI (862kPa)
 Design Temperature: 240°F (115°C)

SCHEDULE

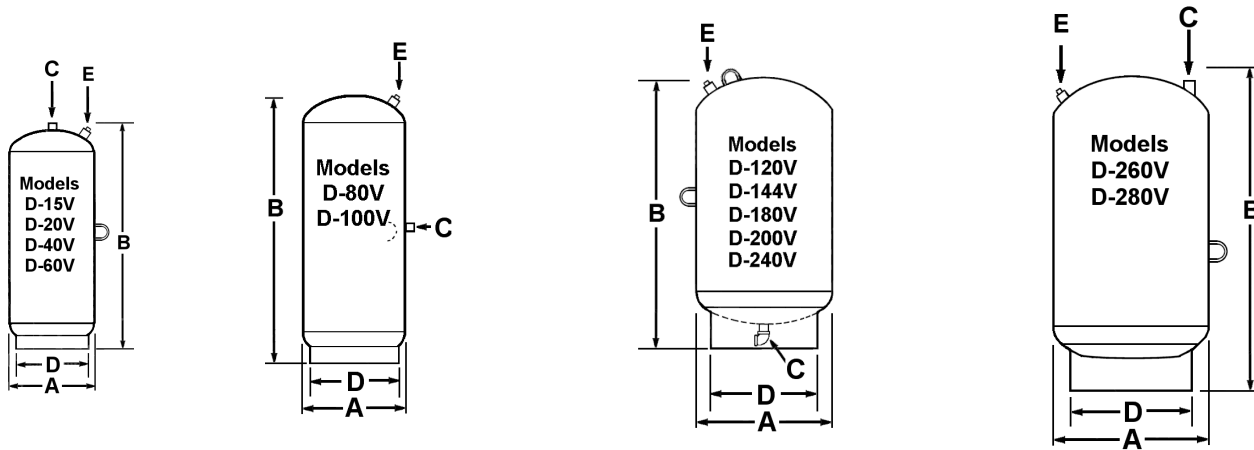
PART NUMBER			MODEL NO.	VOLUME GALLONS (LITERS)		TAGGING INFORMATION	QUANTITY
PRESSURIZED EXPANSION TANKS	WITH SEISMIC RESTRAINTS	WITH SEISMIC RESTRAINTS AND SIGHT GLASS		TANK	ACCEPTANCE		
116491	116942	116733	D-15V	8.0 (30.3)	2.4 (9.1)		
116492	116943	116734	D-20V	10.9 (41.3)	2.4 (9.1)		
116493	116944	116735	D-40V	21.7 (82.1)	11.3 (42.8)		
116525	116945	116736	D-60V	33.6 (127.2)	11.3 (42.8)		
116526	116946	116737	D-80V	44.4 (168.1)	22.6 (85.5)		
116527	116947	116738	D-100V	55.7 (211.8)	22.6 (85.5)		
116528	116948	116739	D-120V	68.0 (257.4)	34.0 (128.7)		
116529	116949	116740	D-144V	77.0 (291.5)	34.0 (128.7)		
116530	116950	116741	D-180V	90.0 (340.7)	34.0 (128.7)		
116531	116951	116742	D-200V	110.0 (416.4)	34.0 (128.7)		
116532	116952	116743	D-240V	132.0 (500)	46.0 (174.1)		
116780	116953	116744	D-260V	159.0 (600)	56.0 (212.0)		
116781	116954	116745	D-280V	211.0 (800)	84.0 (318.0)		

TYPICAL SPECIFICATION

Furnish and install as shown on plans a _____ gallon (_____ liter) _____" (_____ mm) diameter x _____" (_____ mm) high pre-charged vertical steel expansion tank with integral heavy duty Butyl rubber diaphragm. The tank shall have _____" NPT system connection(s), and a .302"-32 charging valve connection (standard tire valve) to facilitate the on-site charging of the tank to meet system requirements.

The tank must be constructed in accordance with Section VIII of the ASME Boiler and Pressure Vessel Code and stamped 125 PSI (862 kPa) working pressure.

Each tank shall be Xylem – Bell & Gossett Model No. _____



NOTE:Tanks are factory pre-charged at 12 psi (83 kPa)
Sight glass and seismic restraints available.
Tanks can also be installed in the horizontal position.

DIMENSIONS AND WEIGHTS

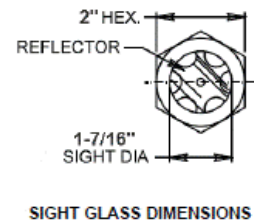
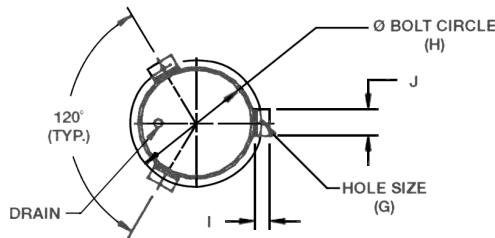
MODEL NUMBER	DIMENSIONS IN INCHES (MM)						APPROX. SHPG. WT. LBS. (Kg)	APPROX. WT* 100% FULL LBS. (Kg)
	A	B	SYSTEM CONNECTION C	SKIRT O.D. D	CHARGING VALVE E	SKIRT THICKNESS		
D-15V**	12 (305)	19-1/2 (495)	1/2 NPTM	10-3/4 (273)	.302"-32 NC	3/16 (5)	43 (20)	110 (50)
D-20V**	12 (305)	26-1/2 (673)	1/2 NPTM	10-3/4 (273)	.302"-32 NC	3/16 (5)	45 (21)	136 (62)
D-40V	16-1/4 (413)	29-1/2 (749)	1/2 NPTM	12-3/4 (324)	.302"-32 NC	3/16 (5)	90 (41)	271 (123)
D-60V	16-1/4 (413)	45-1/8 (1146)	1/2 NPTM	12-3/4 (324)	.302"-32 NC	3/16 (5)	110 (50)	390 (177)
D-80V	16-1/4 (413)	56 (1422)	1/2 NPTM	12-3/4 (324)	.302"-32 NC	3/16 (5)	146 (66)	517 (234)
D-100V	16-1/4 (413)	69 (1753)	1/2 NPTM	12-3/4 (324)	.302"-32 NC	3/16 (5)	167 (76)	632 (287)
D-120V	24 (610)	43-7/8 (1114)	1 NPTF	16 (406)	.302"-32 NC	1/4 (6)	224 (102)	791 (359)
D-144V	24 (610)	48-3/4 (1238)	1 NPTF	16 (406)	.302"-32 NC	1/4 (6)	244 (111)	887 (402)
D-180V	24 (610)	56-1/8 (1426)	1 NPTF	16 (406)	.302"-32 NC	1/4 (6)	266 (121)	977 (443)
D-200V	24 (610)	62-5/8 (1591)	1 NPTF	16 (406)	.302"-32 NC	1/4 (6)	296 (134)	1214 (551)
D-240V	30 (762)	53-1/2 (1357)	1 NPTF	24 (610)	.302"-32 NC	3/16 (5)	427 (194)	1529 (693)
D-260V	30 (762)	60-1/2 (1537)	1-1/4 NPTM	24 (610)	.302"-32 NC	3/16 (5)	476 (216)	1803 (818)
D-280V	30 (762)	78-1/4 (1989)	1-1/4 NPTM	24 (610)	.302"-32 NC	3/16 (5)	745 (338)	2506 (1137)

Dimensions are subject to change. Not to be used for construction purposes unless certified.

* Approximate weight 100% full occurs if diaphragm fails. ** No Lifting Ring

SEISMIC RESTRAINTS DIMENSIONS IN INCHES (MM)

TANK DIAMETER A	G	H	I	J
12 (305)	9/16 (14)	12-3/4 (324)	2 (51)	2 (51)
16-1/4 (413)	9/16 (14)	14-3/4 (375)	2 (51)	2 (51)
24 (610)	9/16 (14)	18 (457)	2 (51)	2 (51)
30 (762)	7/8 (22)	28 (711)	3 (76)	3 (76)



Xylem Inc.
8200 N. Austin Avenue
Morton Grove, IL 60053
Phone: (847)966-3700
Fax: (847)965-8379
www.bellgossett.com

xylem
Let's Solve Water