



Series 1531

Close Coupled Centrifugal Pumps

Replacement Parts

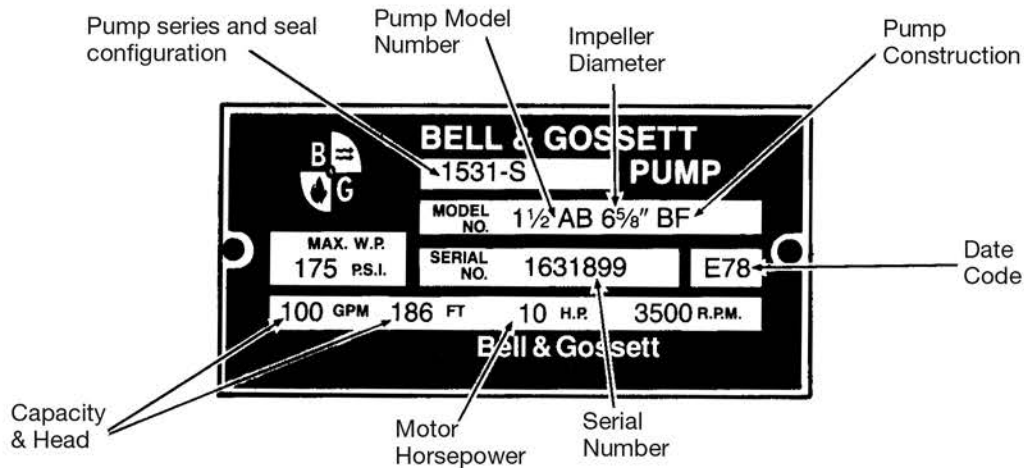
Index



How to Use This Parts List	3
Standard Pumps	4
Exploded Parts View - Standard Seal Configuration	5
Exploded Parts View - Stuffing Box Configuration	6
1-1/4AB	7
1-1/4AC	8
1-1/2AB	9
1-1/2AC	10
2AB	11
2AC	12
2-1/2A	13
2-1/2AB	14
3AB	15
3AC	16
4AB	17
4AC	18
5A	19
1-1/4BB	20
1-1/4BC	21
1-1/2BB	22
1-1/2BC	23
2BB	24
2BC	25
2.5B	26
2.5BB	27
3BB	28
3BC	29
4BB	30
4BC	31
5BB	32
5BC	33
6BB	34
6BC	35
2E	36
3E	37
4E	38
5E	39
6E	40
"G" Size Pumps	41
Mechanical Seals for - Stuffing Box Type Pumps	42
Packing Sets for - Stuffing Box Type Pumps	42
Motor Frame Size Selection Chart	43

How to use this PARTS LIST

The pump nameplate identifies the pump by pipe size, seal configuration, pump construction and impeller diameter as shown below.



The nameplate identifies the pump in the example as a Series 1531 with a "-S, seal and Bronze Fitted (BF) construction. The pump is listed in the parts list by its maximum impeller diameter and would be called a 1 1/2 AB pump. The actual impeller size for the example pump is 6 5/8" as shown in the pump description space.

The Series 1531 pump is furnished in either a "Standard Seal" or "Stuffing Box" configuration. The "Standard Seal" pump has no seal designation after the Series Number in the nameplate; if the example were of "Standard Seal" configuration the nameplate would show it to be a 1531 6 5/8" BF pump.

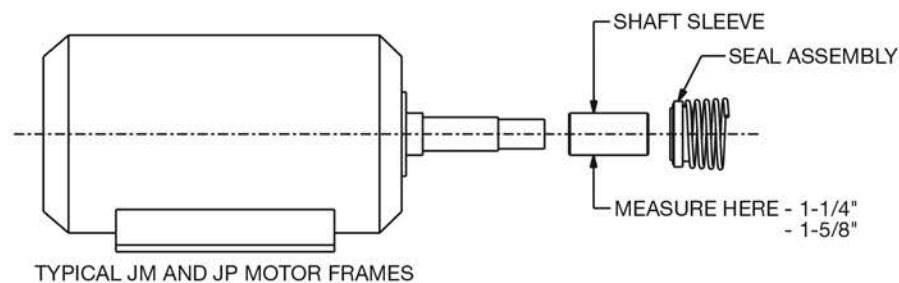
The "Stuffing Box" model has three positive seal configurations:

Series 1531-S	Single Seal	Series 1531-PF	Packing Rings with
Series 1531-D	Double Seal		Flush (Lantern) Ring

The motor shaft size, depending on motor horsepower, may be either 1 1/4" or 1 5/8" in diameter. The shaft size is measured at the point where the shaft enters the volute cover plate and affects the selection of the seal, shaft sleeve, water slinger, impeller, impeller hardware and volute cover plate as indicated in the parts list.

Follow the procedure below for proper parts selection:

1. Determine from the nameplate the pump size, seal configuration, pump construction and impeller diameter.
2. Measure shaft sleeve diameter at the seal.



3. Refer to the index for the page number of the parts list for the specific pump.
4. Find the proper column in the parts list for the pump construction involved.
5. Select part numbers using the drawings on page 5 or 6 for identification. Where shaft diameter affects parts selection use the measurement indicated in step 2.
6. Motor brackets vary with motor frame sizes. Secure the motor frame number from the motor nameplate and use to select the proper motor bracket. Consult the Motor Frame Size Selection Chart on page 42 if additional help is needed in obtaining a motor frame size. Always give complete motor nameplate data when ordering replacement motors.

Cross Reference Sizes for Standard Pumps

STOCK SIZE	PUMP SIZE	H.P.	IMPELLER NUMBER	IMPELLER SIZE	RPM
*27T	1 ¹ / ₄ AB	³ / ₄	P46630	@6 ¹ / ₄ "	1750
*28T	1 ¹ / ₂ AB	1 ¹ / ₂	P47950	@7"	1750
*29T	2 ¹ / ₂ A	2	P49000	@6 ³ / ₄ "	1750
*30T	1 ¹ / ₂ BB	3	P78528	@8 ¹ / ₂ "	1750
*31T	1 ¹ / ₂ BB	5	P78523	@9 ¹ / ₂ "	1750
*32T	2BB	5	P78525	@8 ¹ / ₂ "	1750
*33T	2AB	7 ¹ / ₂	P47950	@5 ³ / ₄ "	3500
*34T	1 ¹ / ₄ AB	3	P46630	@5 ³ / ₈ "	3500
*35T	1 ¹ / ₂ AB	5	P47950	@5 ¹ / ₂ "	3500
*36T	2AB	5	P47950	@5 ¹ / ₄ "	3500
*37T	1 ¹ / ₄ BB	2	P78523	@8 ¹ / ₈ "	1750
*38T	1 ¹ / ₄ BB	3	P78523	@9 ¹ / ₈ "	1750
*39T	2 ¹ / ₂ B	5	P78525	@8 ¹ / ₄ "	1750
*40T	2 ¹ / ₂ B	7 ¹ / ₂	P78525	@9 ¹ / ₂ "	1750
*41T	1 ¹ / ₂ AB	1	P47950	@6 ¹ / ₂ "	1750
*42T	1 ¹ / ₄ AB	2	P46630	@4 ¹ / ₁₆ "	3500
*43T	3BB	10	P49620	@9 ¹ / ₂ "	1750
*44T	1 ¹ / ₄ AB	5	P46630	@6 ¹ / ₄ "	3500
*311T	1 ¹ / ₂ AB	1	P47956	@6 ¹ / ₄ "	1750
*312T	1 ¹ / ₂ AB	1 ¹ / ₂	P47950	@6 ⁷ / ₈ "	1750
*313T	1 ¹ / ₂ BB	2	P78531	@7 ³ / ₄ "	1750
*313TB	1 ¹ / ₂ BC	2	P78531	@7 ³ / ₄ "	1750
*314T	1 ¹ / ₂ BB	3	P78528	@8 ¹ / ₂ "	1750
*314TB	1 ¹ / ₂ BC	3	P78528	@8 ¹ / ₂ "	1750
*315T	1 ¹ / ₂ BB	5	P78523	@9 ¹ / ₂ "	1750
*315TB	1 ¹ / ₂ BC	5	P78523	@9 ¹ / ₂ "	1750
*316T	2 ¹ / ₂ A	2	P49000	@6 ³ / ₄ "	1750
*316TB	2 ¹ / ₂ AB	2	P50717	@6 ³ / ₈ "	1750
*317T	3AB	3	P77560	@6 ³ / ₄ "	1750
*318T	2 ¹ / ₂ B	5	P78525	@8 ¹ / ₄ "	1750
*318TB	2 ¹ / ₂ BB	5	P50733	@8 ¹ / ₄ "	1750
*319T	2 ¹ / ₂ B	7 ¹ / ₂	P78525	@9 ¹ / ₂ "	1750

STOCK SIZE	PUMP SIZE	H.P.	IMPELLER NUMBER	IMPELLER SIZE	RPM
*319TB	2 ¹ / ₂ BB	7 ¹ / ₂	P50732	@9 ¹ / ₂ "	1750
*3110T	4BB	5	P50550	@7 ³ / ₄ "	1750
*3110TB	4AC	5	P50762	@6 ⁵ / ₈ "	1750
*3111T	4BB	7 ¹ / ₂	P50550	@8 ³ / ₈ "	1750
*3111TB	4BC	7 ¹ / ₂	P50750	@7 ³ / ₄ "	1750
*3112T	4BB	10	P50550	@9 ¹ / ₈ "	1750
*3112TB	4BC	10	P50749	@8 ¹ / ₂ "	1750
*3113T	1 ¹ / ₄ AB	3	P46630	@5 ¹ / ₈ "	3500
*3113TB	1 ¹ / ₄ AC	3	P50655	@5 ¹ / ₈ "	3500
*3114T	1 ¹ / ₄ AB	5	P46630	@6"	3500
*3114TB	1 ¹ / ₄ AC	5	P50654	@6"	3500
*3115T	1 ¹ / ₄ AB	7 ¹ / ₂	P46630	@6 ⁵ / ₈ "	3500
*3115TB	1 ¹ / ₄ AC	7 ¹ / ₂	P50653	@6 ⁵ / ₈ "	3500
*3116T	2AB	5	P47950	@5 ¹ / ₈ "	3500
*3116TB	2AC	5	P50687	@5 ¹ / ₈ "	3500
*3117T	2AB	7 ¹ / ₂	P47950	@5 ³ / ₄ "	3500
*3117TB	2AC	7 ¹ / ₂	P50686	@5 ³ / ₄ "	3500
*3118T	2AB	10	P47950	@6 ³ / ₈ "	3500
*3118TB	2AC	10	P50685	@6 ³ / ₈ "	3500
*3119T	3AB	10	P78285	@5 ³ / ₈ "	3500
*3120T	3AB	15	P78282	@5 ⁷ / ₈ "	3500
*3121T	3AB	20	P77592	@6 ³ / ₈ "	3500
*3122T	2 ¹ / ₂ AB	7 ¹ / ₂	P50717	@5 ¹ / ₈ "	3500
*3123T	2 ¹ / ₂ AB	10	P50717	@5 ⁵ / ₈ "	3500
*3124T	2 ¹ / ₂ AB	15	P50717	@6 ³ / ₈ "	3500
*3125T	2 ¹ / ₂ AB	20	P50723	@7"	3500
*3126T	2 ¹ / ₂ AB	3	P50716	@7"	1750
*3127T	3BB	5	P49620	@7 ³ / ₄ "	1750
*3128T	3BB	7 ¹ / ₂	P49620	@8 ⁷ / ₈ "	1750
*3129T	3BB	10	P49620	@9 ¹ / ₂ "	1750
*3130T	4BC	15	P50755	@9 ¹ / ₂ "	1750

All pumps above are standard mechanical seal and bronze fitted construction.

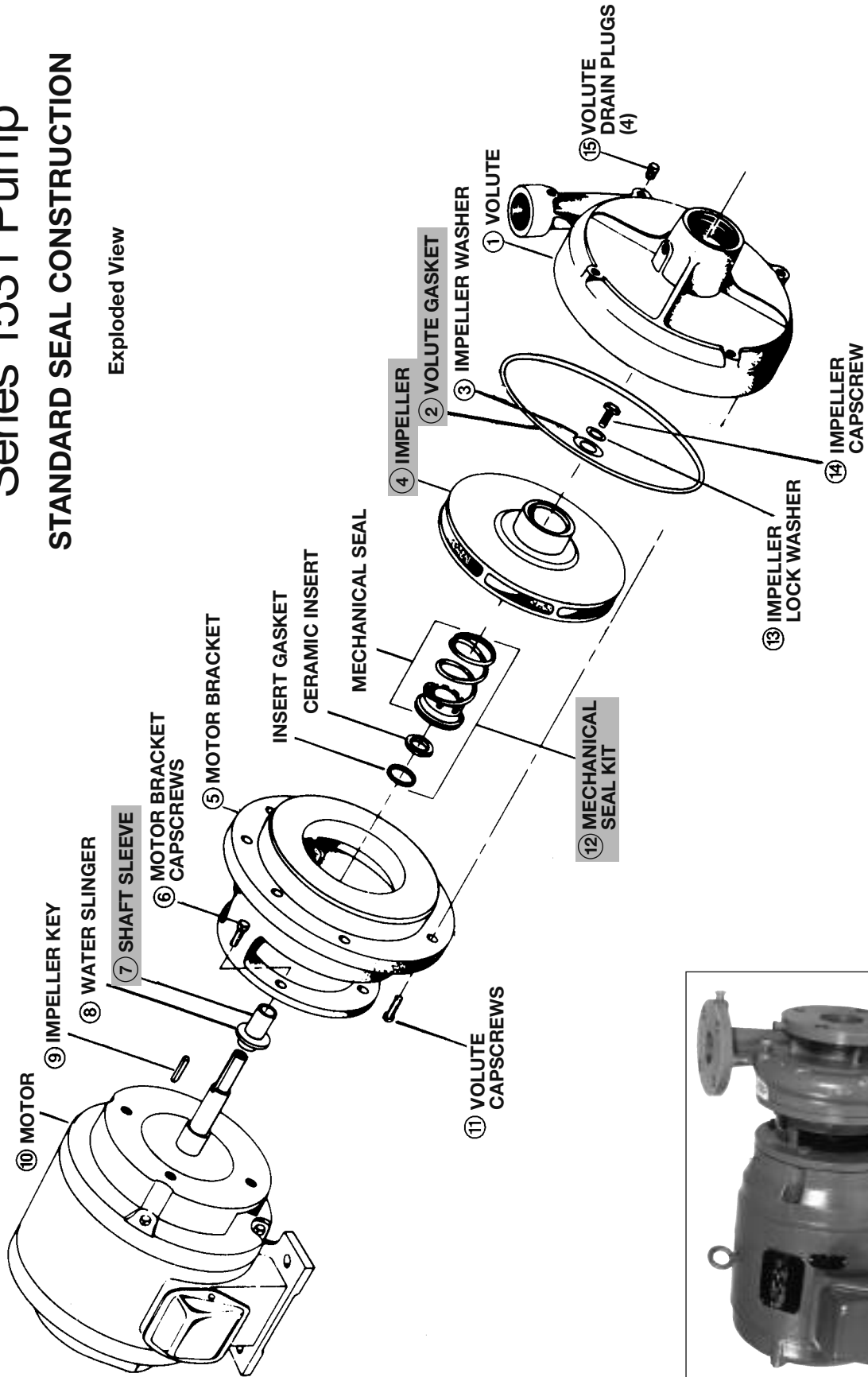
*Pumps obsolete, some parts still available.

■ – Factory recommended spare parts.

Series 1531 Pump

STANDARD SEAL CONSTRUCTION

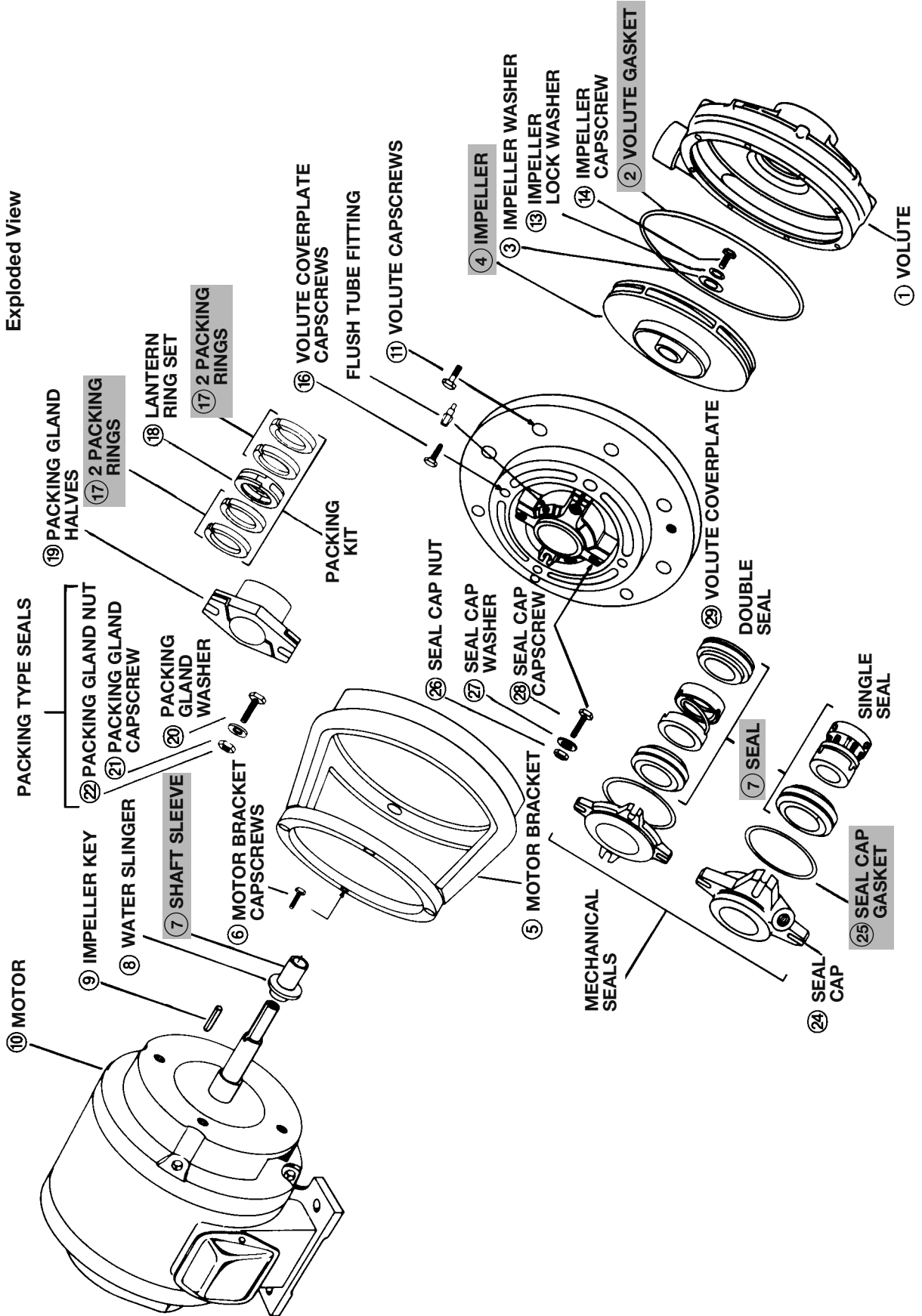
Exploded View



— Factory recommended spare parts.

Series 1531 Pump

OPTIONAL STUFFING BOX CONSTRUCTION



- Factory recommended spare parts.

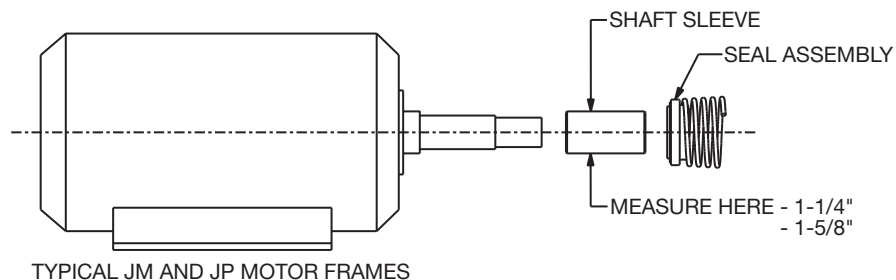
1 1/4" AB

ITEM NO.	DESCRIPTION	PUMP CONSTRUCTION			
		BRONZE FITTED	BRONZE FITTED WITH WEAR RING	ALL IRON	ALL BRONZE
PARTS COMMON TO BOTH TYPES					
4	Impeller (state diameter) 7" full dia. 1 1/4" shaft sleeve	P46630	P46630	N/A†	P46630
14	Impeller Capscrew 1 1/4" shaft sleeve	P52350	P52350	P52350	P52350
13	Impeller Lockwasher 1 1/4" shaft sleeve	J23874	J23874	J23874	J23874
3	Impeller Washer 1 1/4" shaft sleeve	P46390	P46390	P46381	P46390
9	Impeller Key 1 1/4" shaft sleeve	P49369	P49369	P49369	P49369
1	Volute	P41200	N/A†	P41200	N/A†
	Wear Ring	—	P46700	—	—
15	Volute Drain Plug (4)	P39020	P39020	P39030	P39470
11	Volute Capscrew (8)	P40020	P40020	P40020	P52310
2	Volute Gasket	P57700	P57700	P57700	P57700
8	Water Slinger	P53550	P53550	P53550	P53550
PARTS FOR STANDARD SEAL CONSTRUCTION					
5	Motor Bracket – Motor Frames 143JM-145JM, 182JM-184JM	186526	186526	186526	P56929
6	Motor Bracket Capscrew for above (4)	P40020	P40020	P40020	P40020
5	Motor Bracket – Motor Frames 213JM-215JM	186528	186528	186528	P56939
6	Motor Bracket Capscrew for above (4)	K03600	K03600	K03600	K03600
12	Seal Kit Buna/Carbon/Ceramic 1 1/4" shaft sleeve	186862LF	186862LF	186860	186862LF
12	Seal Kit EPR/Carbon/Tungsten Carbide 1 1/4" shaft sleeve	186861LF	186861LF	—	186861LF
7	Shaft Sleeve Kit for all JM Sizes thru 215JM	185024LF	185024LF	185025	185024LF
PARTS FOR STUFFING BOX CONSTRUCTION					
5	Motor Bracket – Motor Frames 143JP-145JP, 182JP-184JP	P85023	P85023	P85023	Not Offered
6	Motor Bracket Capscrew for above (4)	P52320	P52320	P52320	
	Packing 1 1/4" shaft sleeve	See Table C or D, Page 41			
	Single Seal Components 1 1/4" shaft sleeve	See Table A, Page 41			
	Double Seal Components 1 1/4" shaft sleeve	See Table B, Page 41			
	Shaft Sleeve 1 1/4" shaft sleeve	See Table A, B, C or D, Page 41			
29	Volute Coverplate 1 1/4" shaft sleeve	P85027	P85027	P85027	
16	Volute Coverplate Capscrew for above (4)	P40020	P40020	P40020	
1	Volute-250 PSI Operation for -S and -PF Seals only	Not Offered			

N/A – NO LONGER AVAILABLE

†The impeller and/or volute are no longer available. This pump can be converted to the current style pump by ordering both the current style impeller and the current style volute.


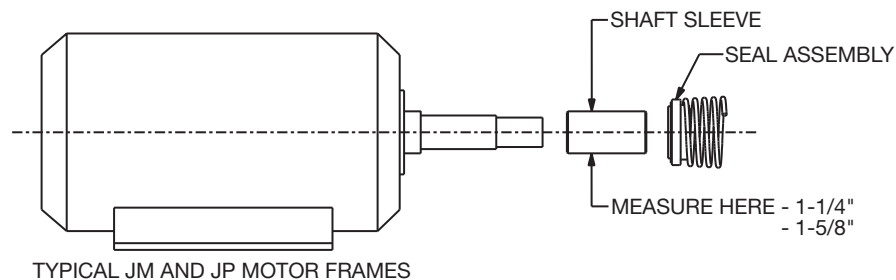
— Factory recommended spare parts.



1 1/4" AC

ITEM NO.	DESCRIPTION	PUMP CONSTRUCTION			
		BRONZE FITTED	BRONZE FITTED WITH WEAR RING	ALL IRON	ALL BRONZE
PARTS COMMON TO BOTH TYPES					
4	Impeller (state diameter) 7" full dia. 1 1/4" shaft sleeve	P50652	P50652	P50662	P50652
14	Impeller Capscrew 1 1/4" shaft sleeve	P52350	P52350	P52350	P52350
13	Impeller Lockwasher 1 1/4" shaft sleeve	J23874	J23874	J23874	J23874
3	Impeller Washer 1 1/4" shaft sleeve	P46390	P46390	P46381	P46390
9	Impeller Key 1 1/4" shaft sleeve	P49369	P49369	P49369	P49369
1	Volute	P41616	*P44151	P41616	P41618
	Wear Ring	—	P46700	—	—
15	Volute Drain Plug (4)	P39020	P39020	P39030	P39470
11	Volute Capscrew (8)	P40020	P40020	P40020	P52310
2	Volute Gasket	P57700	P57700	P57700	P57700
8	Water Slinger	P53550	P53550	P53550	P53550
PARTS FOR STANDARD SEAL CONSTRUCTION					
5	Motor Bracket – Motor Frames 143JM-145JM, 182JM-184JM	186526	186526	186526	P56929
6	Motor Bracket Capscrew for above (4)	P40020	P40020	P40020	P40020
5	Motor Bracket – Motor Frames 213JM-215JM	186528	186528	186528	P56939
6	Motor Bracket Capscrew for above (4)	K03600	K03600	K03600	K03600
12	Seal Kit Buna/Carbon/Ceramic 1 1/4" shaft sleeve	186862LF	186862LF	186860	186862LF
12	Seal Kit EPR/Carbon/Tungsten Carbide 1 1/4" shaft sleeve	186861LF	186861LF	—	186861LF
7	Shaft Sleeve Kit for all JM Sizes thru 215JM	185024LF	185024LF	185025	185024LF
PARTS FOR STUFFING BOX CONSTRUCTION					
5	Motor Bracket – Motor Frames 143JP-145JP, 182JP-184JP	P85023	P85023	P85023	Not Offered
6	Motor Bracket Capscrew for above (4)	P52320	P52320	P52320	
	Packing 1 1/4" shaft sleeve	See Table C or D, Page 41			
	Single Seal Components 1 1/4" shaft sleeve	See Table A, Page 41			
	Double Seal Components 1 1/4" shaft sleeve	See Table B, Page 41			
	Shaft Sleeve 1 1/4" shaft sleeve	See Table A, B, C or D, Page 41			
29	Volute Coverplate 1 1/4" shaft sleeve	P85027	P85027	P85027	
16	Volute Coverplate Capscrew for above (4)	P40020	P40020	P40020	
1	Volute-250 PSI Operation for -S and -PF Seals only	Not Offered			

* Includes Wear Ring.

 – Factory recommended spare parts.


1 1/2 AB

ITEM NO.	DESCRIPTION	PUMP CONSTRUCTION			
		BRONZE FITTED	BRONZE FITTED WITH WEAR RING	ALL IRON	ALL BRONZE
PARTS COMMON TO BOTH TYPES					
4	Impeller (state diameter) 7" full dia. 1 1/4" shaft sleeve	P47950	P47950	P47810	P47950
4	Impeller (state diameter) 7" full dia. 1 5/8" shaft sleeve	P48070	P48070	P48050	P48070
14	Impeller Capscrew 1 1/4" shaft sleeve	P52350	P52350	P52350	P52350
14	Impeller Capscrew 1 5/8" shaft sleeve	P13800	P13800	P13800	P13800
13	Impeller Lockwasher 1 1/4" shaft sleeve	J23874	J23874	J23874	J23874
13	Impeller Lockwasher 1 5/8" shaft sleeve	J23875	J23875	J23875	J23875
3	Impeller Washer 1 1/4" shaft sleeve	P46390	P46390	P46381	P46390
3	Impeller Washer 1 5/8" shaft sleeve	P51250	P51250	P46382	P51250
9	Impeller Key 1 1/4" shaft sleeve	P49369	P49369	P49369	P49369
9	Impeller Key 1 5/8" shaft sleeve	P49372	P49372	P49372	P49372
1	Volute	P41730	*P44158	P41730	P41750
	Wear Ring	—	P48660	—	—
15	Volute Drain Plug (4)	P39020	P39020	P39030	P39470
11	Volute Capscrew (8)**	P40020	P40020	P40020	P52310
2	Volute Gasket	P57700	P57700	P57700	P57700
8	Water Slinger 1 1/4" shaft sleeve	P53550	P53550	P53550	P53550
PARTS FOR STANDARD SEAL CONSTRUCTION					
5	Motor Bracket – Motor Frames 143JM-145JM, 182JM-184JM	186526	186526	186526	P56929
6	Motor Bracket Capscrew for above (4)	P40020	P40020	P40020	P40020
5	Motor Bracket – Motor Frames 213JM-215JM	186528	186528	186528	P56939
6	Motor Bracket Capscrew for above (4)	K03600	K03600	K03600	K03600
5	Motor Bracket – Motor Frames 254JP-256JP	P77076	P77076	P77076	P77073
6	Motor Bracket Capscrew for above (4)	P13780	P13780	P13780	P13780
12	Seal Kit Buna/Carbon/Ceramic 1 1/4" shaft sleeve	186862LF	186862LF	186860	186862LF
12	Seal Kit Buna/Carbon/Ceramic 1 5/8" shaft sleeve	186543LF	186543LF	186544	186543LF
12	Seal Kit EPR/Carbon/Tungsten Carbide 1 1/4" shaft sleeve	186861LF	186861LF	—	186861LF
12	Seal Kit EPR/Carbon/Tungsten Carbide 1 5/8" shaft sleeve	185225LF	185225LF	—	185225LF
7	Shaft Sleeve Kit 1 1/4" shaft sleeve	185024LF	185024LF	185025	185024LF
7	Shaft Sleeve Kit 1 5/8" shaft sleeve	185021LF	185021LF	185022	185021LF
8	Water Slinger 1 5/8" shaft sleeve	P53720	P53720	P53720	P53720
PARTS FOR STUFFING BOX CONSTRUCTION					
5	Motor Bracket – Motor Frames 143JP-145JP, 182JP-184JP	P85023	P85023	P85023	Not Offered
6	Motor Bracket Capscrew for above (4)	P52320	P52320	P52320	
5	Motor Bracket – Motor Frames 213JP-215JP, 254JP-256JP	P85025	P85025	P85025	
6	Motor Bracket Capscrew for above (4)	K03600	K03600	K03600	
	Packing	See Table C or D, Page 41			
	Single Seal Components	See Table A, Page 41			
	Double Seal Components	See Table B, Page 41			
	Shaft Sleeve	See Table A, B, C or D, Page 41			
29	Volute Coverplate 1 1/4" shaft sleeve	P85027	P85027	P85027	
16	Volute Coverplate Capscrew for above (4)	P40020	P40020	P40020	
29	Volute Coverplate 1 5/8" shaft sleeve	P85035	P85035	P85035	
16	Volute Coverplate Capscrew for above (8)	DJ0081	DJ0081	DJ0081	
1	Volute-250 PSI Operation for -S and -PF Seals only	Not Offered			
8	Water Slinger 1 5/8" shaft sleeve	P77320	P77320	P77320	

NOTE: 1 1/4" Shaft Sleeve - up to and including motor frame 215JM
1 5/8" Shaft Sleeve - motor frame 213JP and larger.

* Includes Wear Ring.

** Not required on Stuffing Box Construction with 1 5/8" shaft.

— Factory recommended spare parts.

1 1/2 AC

ITEM NO.	DESCRIPTION	PUMP CONSTRUCTION				
		BRONZE FITTED	BRONZE FITTED WITH WEAR RING	ALL IRON	ALL BRONZE	
PARTS COMMON TO BOTH TYPES						
4	Impeller (state diameter) 7" full dia. 1 1/4" shaft sleeve	P45492	P45492	P45495		
4	Impeller (state diameter) 7" full dia. 1 5/8" shaft sleeve	P71530	P71530	P71533		
14	Impeller Capscrew 1 1/4" shaft sleeve	P52350	P52350	P52350		
14	Impeller Capscrew 1 5/8" shaft sleeve	P13800	P13800	P13800		
13	Impeller Lockwasher 1 1/4" shaft sleeve	J23874	J23874	J23874		
13	Impeller Lockwasher 1 5/8" shaft sleeve	J23875	J23875	J23875		
3	Impeller Washer 1 1/4" shaft sleeve	P46390	P46390	P46381		
3	Impeller Washer 1 5/8" shaft sleeve	P51250	P51250	P46382		
9	Impeller Key 1 1/4" shaft sleeve	P49369	P49369	P49369		
9	Impeller Key 1 5/8" shaft sleeve	P49372	P49372	P49372		
1	Volute	P45481	*P45483	P45481		
	Wear Ring	—	P48660	—		
15	Volute Drain Plug (4)	P39020	P39020	P39030		
11	Volute Capscrew (8)**	P40020	P40020	P40020		
2	Volute Gasket	P57700	P57700	P57700		
8	Water Slinger 1 1/4" shaft sleeve	P53550	P53550	P53550		
PARTS FOR STANDARD SEAL CONSTRUCTION						
5	Motor Bracket – Motor Frames 143JM-145JM, 182JM-184JM	186526	186526	186526		
6	Motor Bracket Capscrew for above (4)	P40020	P40020	P40020		
5	Motor Bracket – Motor Frames 213JM-215JM	186528	186528	186528		
6	Motor Bracket Capscrew for above (4)	K03600	K03600	K03600		
5	Motor Bracket – Motor Frames 254JP-256JP	P77076	P77076	P77076		
6	Motor Bracket Capscrew for above (4)	P13780	P13780	P13780		
12	Seal Kit Buna/Carbon/Ceramic 1 1/4" shaft sleeve	186862LF	186862LF	186860	Not Offered	
12	Seal Kit Buna/Carbon/Ceramic 1 5/8" shaft sleeve	186543LF	186543LF	186544		
12	Seal Kit EPR/Carbon/Tungsten Carbide 1 1/4" shaft sleeve	186861LF	186861LF	—		
12	Seal Kit EPR/Carbon/Tungsten Carbide 1 5/8" shaft sleeve	185225LF	185225LF	—		
7	Shaft Sleeve Kit 1 1/4" shaft sleeve	185024LF	185024LF	185025		
7	Shaft Sleeve Kit 1 5/8" shaft sleeve	185021LF	185021LF	185022		
8	Water Slinger 1 5/8" shaft sleeve	P53720	P53720	P53720		
PARTS FOR STUFFING BOX CONSTRUCTION						
5	Motor Bracket – Motor Frames 143JP-145JP, 182JP-184JP	P85023	P85023	P85023		
6	Motor Bracket Capscrew for above (4)	P52320	P52320	P52320		
5	Motor Bracket – Motor Frames 213JP-215JP, 254JP-256JP	P85025	P85025	P85025		
6	Motor Bracket Capscrew for above (4)	K03600	K03600	K03600		
	Packing	See Table C or D, Page 41				
	Single Seal Components	See Table A, Page 41				
	Double Seal Components	See Table B, Page 41				
	Shaft Sleeve	See Table A, B, C or D, Page 41				
29	Volute Coverplate 1 1/4" shaft sleeve	P85027	P85027	P85027		
16	Volute Coverplate Capscrew for above (4)	P40020	P40020	P40020		
29	Volute Coverplate 1 5/8" shaft sleeve	P85035	P85035	P85035		
16	Volute Coverplate Capscrew for above (8)	DJ0081	DJ0081	DJ0081		
1	Volute-250 PSI Operation for -S and -PF Seals only	Not Offered				
8	Water Slinger 1 5/8" shaft sleeve	P77320	P77320	P77320		

NOTE: 1 1/4" Shaft Sleeve - up to and including motor frame 215JM
1 5/8" Shaft Sleeve - motor frame 213JP and larger.

* Includes Wear Ring.

** Not required on Stuffing Box Construction with 1 5/8" shaft sleeve.

— Factory recommended spare parts.

2AB

ITEM NO.	DESCRIPTION	PUMP CONSTRUCTION			
		BRONZE FITTED	BRONZE FITTED WITH WEAR RING	ALL IRON	ALL BRONZE
PARTS COMMON TO BOTH TYPES					
4	Impeller (state diameter) 7" full dia. 1 ¹ / ₄ " shaft sleeve	P47950	P47950	P47810	P47950
4	Impeller (state diameter) 7" full dia. 1 ⁵ / ₈ " shaft sleeve	P48070	P48070	P48050	P48070
14	Impeller Capscrew 1 ¹ / ₄ " shaft sleeve	P52350	P52350	P52350	P52350
14	Impeller Capscrew 1 ⁵ / ₈ " shaft sleeve	P13800	P13800	P13800	P13800
13	Impeller Lockwasher 1 ¹ / ₄ " shaft sleeve	J23874	J23874	J23874	J23874
13	Impeller Lockwasher 1 ⁵ / ₈ " shaft sleeve	J23875	J23875	J23875	J23875
3	Impeller Washer 1 ¹ / ₄ " shaft sleeve	P46390	P46390	P46381	P46390
3	Impeller Washer 1 ⁵ / ₈ " shaft sleeve	P51250	P51250	P46382	P51250
9	Impeller Key 1 ¹ / ₄ " shaft sleeve	P49369	P49369	P49369	P49369
9	Impeller Key 1 ⁵ / ₈ " shaft sleeve	P49372	P49372	P49372	P49372
1	Volute	N/A†	N/A†	N/A†	N/A†
	Wear Ring	—	P48660	—	—
15	Volute Drain Plug (4)	P39040	P39040	P39050	P39480
11	Volute Capscrew (8)**	P40020	P40020	P40020	P52310
2	Volute Gasket	P57700	P57700	P57700	P57700
8	Water Slinger 1 ¹ / ₄ " shaft sleeve	P53550	P53550	P53550	P53550
PARTS FOR STANDARD SEAL CONSTRUCTION					
5	Motor Bracket – Motor Frames 143JM-145JM, 182JM-184JM	186526	186526	186526	P56929
6	Motor Bracket Capscrew for above (4)	P40020	P40020	P40020	P40020
5	Motor Bracket – Motor Frames 213JM-215JM	186528	186528	186528	P56939
6	Motor Bracket Capscrew for above (4)	K03600	K03600	K03600	K03600
5	Motor Bracket – Motor Frames 254JP-256JP	P77076	P77076	P77076	P77073
6	Motor Bracket Capscrew for above (4)	P13780	P13780	P13780	P13780
12	Seal Kit Buna/Carbon/Ceramic 1 ¹ / ₄ " shaft sleeve	186862LF	186862LF	186860	186862LF
12	Seal Kit Buna/Carbon/Ceramic 1 ⁵ / ₈ " shaft sleeve	186543LF	186543LF	186544	186543LF
12	Seal Kit EPR/Carbon/Tungsten Carbide 1 ¹ / ₄ " shaft sleeve	186861LF	186861LF	—	186861LF
12	Seal Kit EPR/Carbon/Tungsten Carbide 1 ⁵ / ₈ " shaft sleeve	185225LF	185225LF	—	185225LF
7	Shaft Sleeve Kit 1 ¹ / ₄ " shaft sleeve	185024LF	185024LF	185025	185024LF
7	Shaft Sleeve Kit 1 ⁵ / ₈ " shaft sleeve	185021LF	185021LF	185022	185021LF
8	Water Slinger 1 ⁵ / ₈ " shaft sleeve	P53720	P53720	P53720	P53720
PARTS FOR STUFFING BOX CONSTRUCTION					
5	Motor Bracket – Motor Frames 143JP-145JP, 182JP-184JP	P85023	P85023	P85023	Not Offered
6	Motor Bracket Capscrew for above (4)	P52320	P52320	P52320	
5	Motor Bracket – Motor Frames 213JP-215JP, 254JP-256JP	P85025	P85025	P85025	
6	Motor Bracket Capscrew for above (4)	K03600	K03600	K03600	
	Packing	See Table C or D, Page 41			
	Single Seal Components	See Table A, Page 41			
	Double Seal Components	See Table B, Page 41			
	Shaft Sleeve	See Table A, B, C or D, Page 41			
29	Volute Coverplate 1 ¹ / ₄ " shaft sleeve	P85027	P85027	P85027	
16	Volute Coverplate Capscrew for above (4)	P40020	P40020	P40020	
29	Volute Coverplate 1 ⁵ / ₈ " shaft sleeve	P85035	P85035	P85035	
16	Volute Coverplate Capscrew for above (8)	DJ0081	DJ0081	DJ0081	
1	Volute-250 PSI Operation for -S and -PF Seals only	Not Offered			
8	Water Slinger 1 ⁵ / ₈ " shaft sleeve	P77320	P77320	P77320	

NOTE: 1¹/₄" Shaft Sleeve - up to and including motor frame 215JM
1⁵/₈" Shaft Sleeve - motor frame 213JP and larger.

N/A – NO LONGER AVAILABLE

†The impeller and/or volute are no longer available. This pump can be converted to the current style pump by ordering both the current style impeller and the current style volute.

** Not required on Stuffing Box Construction with 1⁵/₈" shaft sleeve.

— Factory recommended spare parts.

2AC

ITEM NO.	DESCRIPTION	PUMP CONSTRUCTION			
		BRONZE FITTED	BRONZE FITTED WITH WEAR RING	ALL IRON	ALL BRONZE
PARTS COMMON TO BOTH TYPES					
4	Impeller (state diameter) 7" full dia. 1 ¹ / ₄ " shaft sleeve	P50684	P50684	P50696	P50684
4	Impeller (state diameter) 7" full dia. 1 ⁵ / ₈ " shaft sleeve	P50692	P50692	P50698	P50692
14	Impeller Capscrew 1 ¹ / ₄ " shaft sleeve	P52350	P52350	P52350	P52350
14	Impeller Capscrew 1 ⁵ / ₈ " shaft sleeve	P13800	P13800	P13800	P13800
13	Impeller Lockwasher 1 ¹ / ₄ " shaft sleeve	J23874	J23874	J23874	J23874
13	Impeller Lockwasher 1 ⁵ / ₈ " shaft sleeve	J23875	J23875	J23875	J23875
3	Impeller Washer 1 ¹ / ₄ " shaft sleeve	P46390	P46390	P46381	P46390
3	Impeller Washer 1 ⁵ / ₈ " shaft sleeve	P51250	P51250	P46382	P51250
9	Impeller Key 1 ¹ / ₄ " shaft sleeve	P49369	P49369	P49369	P49369
9	Impeller Key 1 ⁵ / ₈ " shaft sleeve	P49372	P49372	P49372	P49372
1	Volute	P42258	*P44153	P42258	P42260
	Wear Ring	—	P49145	—	—
15	Volute Drain Plug (4)	P39040	P39040	P39050	P39480
11	Volute Capscrew (8)**	P40020	P40020	P40020	P52310
2	Volute Gasket	P57700	P57700	P57700	P57700
8	Water Slinger 1 ¹ / ₄ " shaft sleeve	P53550	P53550	P53550	P53550
PARTS FOR STANDARD SEAL CONSTRUCTION					
5	Motor Bracket – Motor Frames 143JM-145JM, 182JM-184JM	186526	186526	186526	P56929
6	Motor Bracket Capscrew for above (4)	P40020	P40020	P40020	P40020
5	Motor Bracket – Motor Frames 213JM-215JM	186528	186528	186528	P56939
6	Motor Bracket Capscrew for above (4)	K03600	K03600	K03600	K03600
5	Motor Bracket – Motor Frames 254JP-256JP	P77076	P77076	P77076	P77073
6	Motor Bracket Capscrew for above (4)	P13780	P13780	P13780	P13780
12	Seal Kit Buna/Carbon/Ceramic 1 ¹ / ₄ " shaft sleeve	186862LF	186862LF	186860	186862LF
12	Seal Kit Buna/Carbon/Ceramic 1 ⁵ / ₈ " shaft sleeve	186543LF	186543LF	186544	186543LF
12	Seal Kit EPR/Carbon/Tungsten Carbide 1 ¹ / ₄ " shaft sleeve	186861LF	186861LF	—	186861LF
12	Seal Kit EPR/Carbon/Tungsten Carbide 1 ⁵ / ₈ " shaft sleeve	185225LF	185225LF	—	185225LF
7	Shaft Sleeve Kit 1 ¹ / ₄ " shaft sleeve	185024LF	185024LF	185025	185024LF
7	Shaft Sleeve Kit 1 ⁵ / ₈ " shaft sleeve	185021LF	185021LF	185022	185021LF
8	Water Slinger 1 ⁵ / ₈ " shaft sleeve	P53720	P53720	P53720	P53720
PARTS FOR STUFFING BOX CONSTRUCTION					
5	Motor Bracket – Motor Frames 143JP-145JP, 182JP-184JP	P85023	P85023	P85023	Not Offered
6	Motor Bracket Capscrew for above (4)	P52320	P52320	P52320	
5	Motor Bracket – Motor Frames 213JP-215JP, 254JP-256JP	P85025	P85025	P85025	
6	Motor Bracket Capscrew for above (4)	K03600	K03600	K03600	
	Packing	See Table C or D, Page 41			
	Single Seal Components	See Table A, Page 41			
	Double Seal Components	See Table B, Page 41			
	Shaft Sleeve	See Table A, B, C or D, Page 41			
29	Volute Coverplate 1 ¹ / ₄ " shaft sleeve	P85027	P85027	P85027	
16	Volute Coverplate Capscrew for above (4)	P40020	P40020	P40020	
29	Volute Coverplate 1 ⁵ / ₈ " shaft sleeve	P85035	P85035	P85035	
16	Volute Coverplate Capscrew for above (8)	DJ0081	DJ0081	DJ0081	
1	Volute-250 PSI Operation for -S and -PF Seals only	Not Offered			
8	Water Slinger 1 ⁵ / ₈ " shaft sleeve	P77320	P77320	P77320	

NOTE: 1¹/₄" Shaft Sleeve - up to and including motor frame 215JM
1⁵/₈" Shaft Sleeve - motor frame 213JP and larger.

* Includes Wear Ring.

**Not required on Stuffing Box Construction with 1⁵/₈" shaft sleeve.

— Factory recommended spare parts.

2 1/2A

ITEM NO.	DESCRIPTION	PUMP CONSTRUCTION			
		BRONZE FITTED	BRONZE FITTED WITH WEAR RING	ALL IRON	ALL BRONZE
PARTS COMMON TO BOTH TYPES					
4	Impeller (state diameter) 7" full dia. 1 1/4" shaft sleeve	P49000	P49000	N/A†	P49000
4	Impeller (state diameter) 7" full dia. 1 5/8" shaft sleeve	P49040	P49040	N/A†	P49040
14	Impeller Capscrew 1 1/4" shaft sleeve	P52350	P52350	P52350	P52350
14	Impeller Capscrew 1 5/8" shaft sleeve	P13800	P13800	P13800	P13800
13	Impeller Lockwasher 1 1/4" shaft sleeve	J23874	J23874	J23874	J23874
13	Impeller Lockwasher 1 5/8" shaft sleeve	J23875	J23875	J23875	J23875
3	Impeller Washer 1 1/4" shaft sleeve	P46390	P46390	P46381	P46390
3	Impeller Washer 1 5/8" shaft sleeve	P51250	P51250	P46382	P51250
9	Impeller Key 1 1/4" shaft sleeve	P49369	P49369	P49369	P49369
9	Impeller Key 1 5/8" shaft sleeve	P49372	P49372	P49372	P49372
1	Volute	N/A†	N/A†	N/A†	N/A†
	Wear Ring	—	N/A	—	—
15	Volute Drain Plug (4)	P39040	P39040	P39050	P39480
11	Volute Capscrew (8)**	P40020	P40020	P40020	P52310
2	Volute Gasket	P57700	P57700	P57700	P57700
8	Water Slinger 1 1/4" shaft sleeve	P53550	P53550	P53550	P53550
PARTS FOR STANDARD SEAL CONSTRUCTION					
5	Motor Bracket – Motor Frames 143JM-145JM, 182JM-184JM	186526	186526	186526	P56929
6	Motor Bracket Capscrew for above (4)	P40020	P40020	P40020	P40020
5	Motor Bracket – Motor Frames 213JM-215JM	186528	186528	186528	P56939
6	Motor Bracket Capscrew for above (4)	K03600	K03600	K03600	K03600
5	Motor Bracket – Motor Frames 254JP-256JP	P77076	P77076	P77076	P77073
6	Motor Bracket Capscrew for above (4)	P13780	P13780	P13780	P13780
12	Seal Kit Buna/Carbon/Ceramic 1 1/4" shaft sleeve	186862LF	186862LF	186860	186862LF
12	Seal Kit Buna/Carbon/Ceramic 1 5/8" shaft sleeve	186543LF	186543LF	186544	186543LF
12	Seal Kit EPR/Carbon/Tungsten Carbide 1 1/4" shaft sleeve	186861LF	186861LF	—	186861LF
12	Seal Kit EPR/Carbon/Tungsten Carbide 1 5/8" shaft sleeve	185225LF	185225LF	—	185225LF
7	Shaft Sleeve Kit 1 1/4" shaft sleeve	185024LF	185024LF	185025	185024LF
7	Shaft Sleeve Kit 1 5/8" shaft sleeve	185021LF	185021LF	185022	185021LF
8	Water Slinger 1 5/8" shaft sleeve	P53720	P53720	P53720	P53720
PARTS FOR STUFFING BOX CONSTRUCTION					
5	Motor Bracket – Motor Frames 143JP-145JP, 182JP-184JP	P85023	P85023	P85023	Not Offered
6	Motor Bracket Capscrew for above (4)	P52320	P52320	P52320	
5	Motor Bracket – Motor Frames 213JP-215JP, 254JP-256JP	P85025	P85025	P85025	
6	Motor Bracket Capscrew for above (4)	K03600	K03600	K03600	
	Packing	See Table C or D, Page 41			
	Single Seal Components	See Table A, Page 41			
	Double Seal Components	See Table B, Page 41			
	Shaft Sleeve	See Table A, B, C or D, Page 41			
29	Volute Coverplate 1 1/4" shaft sleeve	P85027	P85027	P85027	
16	Volute Coverplate Capscrew for above (4)	P40020	P40020	P40020	
29	Volute Coverplate 1 5/8" shaft sleeve	P85035	P85035	P85035	
16	Volute Coverplate Capscrew for above (8)	DJ0081	DJ0081	DJ0081	
1	Volute-250 PSI Operation for -S and -PF Seals only	Not Offered			
8	Water Slinger 1 5/8" shaft sleeve	P77320	P77320	P77320	

NOTE: 1 1/4" Shaft Sleeve - up to and including motor frame 215JM
1 5/8" Shaft Sleeve - motor frame 213JP and larger.

N/A – NO LONGER AVAILABLE

†The impeller and/or volute are no longer available. This pump can be converted to the current style pump by ordering both the current style impeller and the current style volute.

**Not required on Stuffing Box Construction with 1 5/8" shaft sleeve.

— Factory recommended spare parts.

2 1/2 AB

ITEM NO.	DESCRIPTION	PUMP CONSTRUCTION			
		BRONZE FITTED	BRONZE FITTED WITH WEAR RING	ALL IRON	ALL BRONZE
PARTS COMMON TO BOTH TYPES					
4	Impeller (state diameter) 7" full dia. 1 1/4" shaft sleeve	P50716	P50716	P50727	P50716
4	Impeller (state diameter) 7" full dia. 1 5/8" shaft sleeve	P50723	P50723	P50729	P50723
14	Impeller Capscrew 1 1/4" shaft sleeve	P52350	P52350	P52350	P52350
14	Impeller Capscrew 1 5/8" shaft sleeve	P13800	P13800	P13800	P13800
13	Impeller Lockwasher 1 1/4" shaft sleeve	J23874	J23874	J23874	J23874
13	Impeller Lockwasher 1 5/8" shaft sleeve	J23875	J23875	J23875	J23875
3	Impeller Washer 1 1/4" shaft sleeve	P46390	P46390	P46381	P46390
3	Impeller Washer 1 5/8" shaft sleeve	P51250	P51250	P46382	P51250
9	Impeller Key 1 1/4" shaft sleeve	P49369	P49369	P49369	P49369
9	Impeller Key 1 5/8" shaft sleeve	P49372	P49372	P49372	P49372
1	Volute	P42536	*P44155	P42536	P42538
	Wear Ring	—	P85399	—	—
15	Volute Drain Plug (4)	P39040	P39040	P39050	P39480
11	Volute Capscrew (8)**	P40020	P40020	P40020	P52310
2	Volute Gasket	P57700	P57700	P57700	P57700
8	Water Slinger 1 1/4" shaft sleeve	P53550	P53550	P53550	P53550
PARTS FOR STANDARD SEAL CONSTRUCTION					
5	Motor Bracket – Motor Frames 143JM-145JM, 182JM-184JM	186526	186526	186526	P56929
6	Motor Bracket Capscrew for above (4)	P40020	P40020	P40020	P40020
5	Motor Bracket – Motor Frames 213JM-215JM	186528	186528	186528	P56939
6	Motor Bracket Capscrew for above (4)	K03600	K03600	K03600	K03600
5	Motor Bracket – Motor Frames 254JP-256JP	P77076	P77076	P77076	P77073
6	Motor Bracket Capscrew for above (4)	P13780	P13780	P13780	P13780
5	Motor Bracket – Motor Frames 284JP-286JP	P53880	P53880	P53880	P53900
6	Motor Bracket Capscrew for above (4)	P19490	P19490	P19490	P19490
12	Seal Kit Buna/Carbon/Ceramic 1 1/4" shaft sleeve	186862LF	186862LF	186860	186862LF
12	Seal Kit Buna/Carbon/Ceramic 1 5/8" shaft sleeve	186543LF	186543LF	186544	186543LF
12	Seal Kit EPR/Carbon/Tungsten Carbide 1 1/4" shaft sleeve	186861LF	186861LF	—	186861LF
12	Seal Kit EPR/Carbon/Tungsten Carbide 1 5/8" shaft sleeve	185225LF	185225LF	—	185225LF
7	Shaft Sleeve Kit 1 1/4" shaft sleeve	185024LF	185024LF	185025	185024LF
7	Shaft Sleeve Kit 1 5/8" shaft sleeve	185021LF	185021LF	185022	185021LF
8	Water Slinger 1 5/8" shaft sleeve	P53720	P53720	P53720	P53720
PARTS FOR STUFFING BOX CONSTRUCTION					
5	Motor Bracket – Motor Frames 143JP-145JP, 182JP-184JP	P85023	P85023	P85023	Not Offered
6	Motor Bracket Capscrew for above (4)	P52320	P52320	P52320	
5	Motor Bracket – Motor Frames 213JP-215JP, 254JP-256JP	P85025	P85025	P85025	
6	Motor Bracket Capscrew for above (4)	K03600	K03600	K03600	
5	Motor Bracket – Motor Frames 284JP-286JP	P85099	P85099	P85099	
6	Motor Bracket Capscrew for above (4)	P19490	P19490	P19490	
	Packing	See Table C or D, Page 41			
	Single Seal Components	See Table A, Page 41			
	Double Seal Components	See Table B, Page 41			
	Shaft Sleeve	See Table A, B, C or D, Page 41			
29	Volute Coverplate 1 1/4" shaft sleeve	P85027	P85027	P85027	
16	Volute Coverplate Capscrew for above (4)	P40020	P40020	P40020	
29	Volute Coverplate 1 5/8" shaft sleeve	P85035	P85035	P85035	
16	Volute Coverplate Capscrew for above (8)	DJ0081	DJ0081	DJ0081	
1	Volute-250 PSI Operation for -S and -PF Seals only	Not Offered			
8	Water Slinger 1 5/8" shaft sleeve	P77320	P77320	P77320	

NOTE: 1 1/4" Shaft Sleeve - up to and including motor frame 215JM
1 5/8" Shaft Sleeve - motor frame 213JP and larger.

* Includes Wear Ring.

**Not required on Stuffing Box Construction with 1 5/8" shaft sleeve.

— Factory recommended spare parts.

3AB

ITEM NO.	DESCRIPTION	PUMP CONSTRUCTION			
		BRONZE FITTED	BRONZE FITTED WITH WEAR RING	ALL IRON	ALL BRONZE
PARTS COMMON TO BOTH TYPES					
4	Impeller (state diameter) 7" full dia. 1 ¹ / ₄ " shaft sleeve	P78280	P78280	P78310	P78280
4	Impeller (state diameter) 7" full dia. 1 ⁵ / ₈ " shaft sleeve	P77590	P77590	P77620	P77590
14	Impeller Capscrew 1 ¹ / ₄ " shaft sleeve	P52350	P52350	P52350	P52350
14	Impeller Capscrew 1 ⁵ / ₈ " shaft sleeve	P13800	P13800	P13800	P13800
13	Impeller Lockwasher 1 ¹ / ₄ " shaft sleeve	J23874	J23874	J23874	J23874
13	Impeller Lockwasher 1 ⁵ / ₈ " shaft sleeve	J23875	J23875	J23875	J23875
3	Impeller Washer 1 ¹ / ₄ " shaft sleeve	P46390	P46390	P46381	P46390
3	Impeller Washer 1 ⁵ / ₈ " shaft sleeve	P51250	P51250	P46382	P51250
9	Impeller Key 1 ¹ / ₄ " shaft sleeve	P49369	P49369	P49369	P49369
9	Impeller Key 1 ⁵ / ₈ " shaft sleeve	P49372	P49372	P49372	P49372
1	Volute	P43040	*P43869	P43040	P43060
	Wear Ring	—	P50650	—	—
15	Volute Drain Plug (4)	P39040	P39040	P39050	P39480
11	Volute Capscrew (8)**	P40020	P40020	P40020	P52310
2	Volute Gasket	P57700	P57700	P57700	P57700
8	Water Slinger 1 ¹ / ₄ " shaft sleeve	P53550	P53550	P53550	P53550
PARTS FOR STANDARD SEAL CONSTRUCTION					
5	Motor Bracket – Motor Frames 143JM-145JM, 182JM-184JM	186526	186526	186526	P56929
6	Motor Bracket Capscrew for above (4)	P40020	P40020	P40020	P40020
5	Motor Bracket – Motor Frames 213JM-215JM	186528	186528	186528	P56939
6	Motor Bracket Capscrew for above (4)	K03600	K03600	K03600	K03600
5	Motor Bracket – Motor Frames 254JP-256JP	P77076	P77076	P77076	P77073
6	Motor Bracket Capscrew for above (4)	P13780	P13780	P13780	P13780
5	Motor Bracket – Motor Frames 284JP-286JP, 324JP-326JP	P53880	P53880	P53880	P53900
6	Motor Bracket Capscrew for above (4)	P19490	P19490	P19490	P19490
12	Seal Kit Buna/Carbon/Ceramic 1 ¹ / ₄ " shaft sleeve	186862LF	186862LF	186860	186862LF
12	Seal Kit Buna/Carbon/Ceramic 1 ⁵ / ₈ " shaft sleeve	186543LF	186543LF	186544	186543LF
12	Seal Kit EPR/Carbon/Tungsten Carbide 1 ¹ / ₄ " shaft sleeve	186861LF	186861LF	—	186861LF
12	Seal Kit EPR/Carbon/Tungsten Carbide 1 ⁵ / ₈ " shaft sleeve	185225LF	185225LF	—	185225LF
7	Shaft Sleeve Kit 1 ¹ / ₄ " shaft sleeve	185024LF	185024LF	185025	185024LF
7	Shaft Sleeve Kit 1 ⁵ / ₈ " shaft sleeve	185021LF	185021LF	185022	185021LF
8	Water Slinger 1 ⁵ / ₈ " shaft sleeve	P53720	P53720	P53720	P53720
PARTS FOR STUFFING BOX CONSTRUCTION					
5	Motor Bracket – Motor Frames 143JP-145JP, 182JP-184JP	P85023	P85023	P85023	Not Offered
6	Motor Bracket Capscrew for above (4)	P52320	P52320	P52320	
5	Motor Bracket – Motor Frames 213JP-215JP, 254JP-256JP	P85025	P85025	P85025	
6	Motor Bracket Capscrew for above (4)	K03600	K03600	K03600	
5	Motor Bracket – Motor Frames 284JP-286JP, 324JP-326JP	P85099	P85099	P85099	
6	Motor Bracket Capscrew for above (4)	P19490	P19490	P19490	
	Packing	See Table C or D, Page 41			
	Single Seal Components	See Table A, Page 41			
	Double Seal Components	See Table B, Page 41			
	Shaft Sleeve	See Table A, B, C or D, Page 41			
29	Volute Coverplate 1 ¹ / ₄ " shaft sleeve	P85027	P85027	P85027	
16	Volute Coverplate Capscrew for above (4)	P40020	P40020	P40020	
29	Volute Coverplate 1 ⁵ / ₈ " shaft sleeve	P85035	P85035	P85035	
16	Volute Coverplate Capscrew for above (8)	DJ0081	DJ0081	DJ0081	
1	Volute-250 PSI Operation for -S and -PF Seals only	Not Offered			
8	Water Slinger 1 ⁵ / ₈ " shaft sleeve	P77320	P77320	P77320	

NOTE: 1¹/₄" Shaft Sleeve - up to and including motor frame 215JM
1⁵/₈" Shaft Sleeve - motor frame 213JP and larger.

* Includes Wear Ring.

**Not required on Stuffing Box Construction with 1⁵/₈" shaft sleeve.

— Factory recommended spare parts.

3AC

ITEM NO.	DESCRIPTION	PUMP CONSTRUCTION			
		BRONZE FITTED	BRONZE FITTED WITH WEAR RING	ALL IRON	ALL BRONZE
PARTS COMMON TO BOTH TYPES					
4	Impeller (state diameter) 7" full dia. 1 ¹ / ₄ " shaft sleeve	P71561	P71561	P71567	P71561
4	Impeller (state diameter) 7" full dia. 1 ⁵ / ₈ " shaft sleeve	P71564	P71564	P71570	P71564
14	Impeller Capscrew 1 ¹ / ₄ " shaft sleeve	P52350	P52350	P52350	P52350
14	Impeller Capscrew 1 ⁵ / ₈ " shaft sleeve	P13800	P13800	P13800	P13800
13	Impeller Lockwasher 1 ¹ / ₄ " shaft sleeve	J23874	J23874	J23874	J23874
13	Impeller Lockwasher 1 ⁵ / ₈ " shaft sleeve	J23875	J23875	J23875	J23875
3	Impeller Washer 1 ¹ / ₄ " shaft sleeve	P46390	P46390	P46381	P46390
3	Impeller Washer 1 ⁵ / ₈ " shaft sleeve	P51250	P51250	P46382	P51250
9	Impeller Key 1 ¹ / ₄ " shaft sleeve	P49369	P49369	P49369	P49369
9	Impeller Key 1 ⁵ / ₈ " shaft sleeve	P49372	P49372	P49372	P49372
1	Volute	P43040	*P43869	P43040	P43060
	Wear Ring	—	P50650	—	—
15	Volute Drain Plug (4)	P39040	P39040	P39050	P39480
11	Volute Capscrew (8)**	P40020	P40020	P40020	P52310
2	Volute Gasket	P57700	P57700	P57700	P57700
8	Water Slinger 1 ¹ / ₄ " shaft sleeve	P53550	P53550	P53550	P53550
PARTS FOR STANDARD SEAL CONSTRUCTION					
5	Motor Bracket – Motor Frames 143JM-145JM, 182JM-184JM	186526	186526	186526	P56929
6	Motor Bracket Capscrew for above (4)	P40020	P40020	P40020	P40020
5	Motor Bracket – Motor Frames 213JM-215JM	186528	186528	186528	P56939
6	Motor Bracket Capscrew for above (4)	K03600	K03600	K03600	K03600
5	Motor Bracket – Motor Frames 254JP-256JP	P77076	P77076	P77076	P77073
6	Motor Bracket Capscrew for above (4)	P13780	P13780	P13780	P13780
5	Motor Bracket – Motor Frames 284JP-286JP, 324JP-326JP	P53880	P53880	P53880	P53900
6	Motor Bracket Capscrew for above (4)	P19490	P19490	P19490	P19490
12	Seal Kit Buna/Carbon/Ceramic 1 ¹ / ₄ " shaft sleeve	186862LF	186862LF	186860	186862LF
12	Seal Kit Buna/Carbon/Ceramic 1 ⁵ / ₈ " shaft sleeve	186543LF	186543LF	186544	186543LF
12	Seal Kit EPR/Carbon/Tungsten Carbide 1 ¹ / ₄ " shaft sleeve	186861LF	186861LF	—	186861LF
12	Seal Kit EPR/Carbon/Tungsten Carbide 1 ⁵ / ₈ " shaft sleeve	185225LF	185225LF	—	185225LF
7	Shaft Sleeve Kit 1 ¹ / ₄ " shaft sleeve	185024LF	185024LF	185025	185024LF
7	Shaft Sleeve Kit 1 ⁵ / ₈ " shaft sleeve	185021LF	185021LF	185022	185021LF
8	Water Slinger 1 ⁵ / ₈ " shaft sleeve	P53720	P53720	P53720	P53720
PARTS FOR STUFFING BOX CONSTRUCTION					
5	Motor Bracket – Motor Frames 143JP-145JP, 182JP-184JP	P85023	P85023	P85023	Not Offered
6	Motor Bracket Capscrew for above (4)	P52320	P52320	P52320	
5	Motor Bracket – Motor Frames 213JP-215JP, 254JP-256JP	P85025	P85025	P85025	
6	Motor Bracket Capscrew for above (4)	K03600	K03600	K03600	
5	Motor Bracket – Motor Frames 284JP-286JP, 324JP-326JP	P85099	P85099	P85099	
6	Motor Bracket Capscrew for above (4)	P19490	P19490	P19490	
	Packing	See Table C or D, Page 41			
	Single Seal Components	See Table A, Page 41			
	Double Seal Components	See Table B, Page 41			
	Shaft Sleeve	See Table A, B, C or D, Page 41			
29	Volute Coverplate 1 ¹ / ₄ " shaft sleeve	P85027	P85027	P85027	
16	Volute Coverplate Capscrew for above (4)	P40020	P40020	P40020	
29	Volute Coverplate 1 ⁵ / ₈ " shaft sleeve	P85035	P85035	P85035	
16	Volute Coverplate Capscrew for above (8)	DJ0081	DJ0081	DJ0081	
1	Volute-250 PSI Operation for -S and -PF Seals only	Not Offered			
8	Water Slinger 1 ⁵ / ₈ " shaft sleeve	P77320	P77320	P77320	

NOTE: 1¹/₄" Shaft Sleeve - up to and including motor frame 215JM
1⁵/₈" Shaft Sleeve - motor frame 213JP and larger.

* Includes Wear Ring.

**Not required on Stuffing Box Construction with 1⁵/₈" shaft sleeve.

— Factory recommended spare parts.

4AB

ITEM NO.	DESCRIPTION	PUMP CONSTRUCTION			
		BRONZE FITTED	BRONZE FITTED WITH WEAR RING	ALL IRON	ALL BRONZE
PARTS COMMON TO BOTH TYPES					
4	Impeller (state diameter) 7" full dia. 1 ¹ / ₄ " shaft sleeve	P56140	P56140	N/A†	P56140
4	Impeller (state diameter) 7" full dia. 1 ⁵ / ₈ " shaft sleeve	P50310	P50310	N/A†	P50310
14	Impeller Capscrew 1 ¹ / ₄ " shaft sleeve	P52350	P52350	P52350	P52350
14	Impeller Capscrew 1 ⁵ / ₈ " shaft sleeve	P13800	P13800	P13800	P13800
13	Impeller Lockwasher 1 ¹ / ₄ " shaft sleeve	J23874	J23874	J23874	J23874
13	Impeller Lockwasher 1 ⁵ / ₈ " shaft sleeve	J23875	J23875	J23875	J23875
3	Impeller Washer 1 ¹ / ₄ " shaft sleeve	P46390	P46390	P46381	P46390
3	Impeller Washer 1 ⁵ / ₈ " shaft sleeve	P51250	P51250	P46382	P51250
9	Impeller Key 1 ¹ / ₄ " shaft sleeve	P49369	P49369	P49369	P49369
9	Impeller Key 1 ⁵ / ₈ " shaft sleeve	P49372	P49372	P49372	P49372
1	Volute	N/A†	N/A†	N/A†	N/A†
	Wear Ring	—	P50590	—	—
15	Volute Drain Plug (4)	P39040	P39040	P39050	P39480
11	Volute Capscrew (8)**	P40020	P40020	P40020	P52310
2	Volute Gasket	P57700	P57700	P57700	P57700
8	Water Slinger 1 ¹ / ₄ " shaft sleeve	P53550	P53550	P53550	P53550
PARTS FOR STANDARD SEAL CONSTRUCTION					
5	Motor Bracket – Motor Frames 143JM-145JM, 182JM-184JM	186526	186526	186526	P56929
6	Motor Bracket Capscrew for above (4)	P40020	P40020	P40020	P40020
5	Motor Bracket – Motor Frames 213JM-215JM	186528	186528	186528	P56939
6	Motor Bracket Capscrew for above (4)	K03600	K03600	K03600	K03600
5	Motor Bracket – Motor Frames 254JP-256JP	P77076	P77076	P77076	P77073
6	Motor Bracket Capscrew for above (4)	P13780	P13780	P13780	P13780
5	Motor Bracket – Motor Frames 284JP-286JP, 324JP-326JP	P53880	P53880	P53880	P53900
6	Motor Bracket Capscrew for above (4)	P19490	P19490	P19490	P19490
12	Seal Kit Buna/Carbon/Ceramic 1 ¹ / ₄ " shaft sleeve	186862LF	186862LF	186860	186862LF
12	Seal Kit Buna/Carbon/Ceramic 1 ⁵ / ₈ " shaft sleeve	186543LF	186543LF	186544	186543LF
12	Seal Kit EPR/Carbon/Tungsten Carbide 1 ¹ / ₄ " shaft sleeve	186861LF	186861LF	—	186861LF
12	Seal Kit EPR/Carbon/Tungsten Carbide 1 ⁵ / ₈ " shaft sleeve	185225LF	185225LF	—	185225LF
7	Shaft Sleeve Kit 1 ¹ / ₄ " shaft sleeve	185024LF	185024LF	185025	185024LF
7	Shaft Sleeve Kit 1 ⁵ / ₈ " shaft sleeve	185021LF	185021LF	185022	185021LF
8	Water Slinger 1 ⁵ / ₈ " shaft sleeve	P53720	P53720	P53720	P53720
PARTS FOR STUFFING BOX CONSTRUCTION					
5	Motor Bracket – Motor Frames 143JP-145JP, 182JP-184JP	P85023	P85023	P85023	Not Offered
6	Motor Bracket Capscrew for above (4)	P52320	P52320	P52320	
5	Motor Bracket – Motor Frames 213JP-215JP, 254JP-256JP	P85025	P85025	P85025	
6	Motor Bracket Capscrew for above (4)	K03600	K03600	K03600	
5	Motor Bracket – Motor Frames 284JP-286JP, 324JP-326JP	P85099	P85099	P85099	
6	Motor Bracket Capscrew for above (8)	P19490	P19490	P19490	
	Packing	See Table C or D, Page 41			
	Single Seal Components	See Table A, Page 41			
	Double Seal Components	See Table B, Page 41			
	Shaft Sleeve	See Table A, B, C or D, Page 41			
29	Volute Coverplate 1 ¹ / ₄ " shaft sleeve	P85027	P85027	P85027	
16	Volute Coverplate Capscrew for above (4)	P40020	P40020	P40020	
29	Volute Coverplate 1 ⁵ / ₈ " shaft sleeve	P85035	P85035	P85035	
16	Volute Coverplate Capscrew for above (8)	DJ0081	DJ0081	DJ0081	
1	Volute-250 PSI Operation for -S and -PF Seals only	Not Offered			
8	Water Slinger 1 ⁵ / ₈ " shaft sleeve	P77320	P77320	P77320	

NOTE: 1¹/₄" Shaft Sleeve - up to and including motor frame 215JM
1⁵/₈" Shaft Sleeve - motor frame 213JP and larger.

**Not required on Stuffing Box Construction with 1⁵/₈" shaft sleeve.

— Factory recommended spare parts.

N/A - NO LONGER AVAILABLE

†The impeller and/or volute are no longer available. This pump can be converted to the current style pump by ordering both the current style impeller and the current style volute.

4AC

ITEM NO.	DESCRIPTION	PUMP CONSTRUCTION				
		BRONZE FITTED	BRONZE FITTED WITH WEAR RING	ALL IRON	ALL BRONZE	
PARTS COMMON TO BOTH TYPES						
4	Impeller (state diameter) 7" full dia. 1 ¹ / ₄ " shaft sleeve	P50762	P50762	P50764	Not Offered	
4	Impeller (state diameter) 7" full dia. 1 ⁵ / ₈ " shaft sleeve	P50772	P50772	P50774		
14	Impeller Capscrew 1 ¹ / ₄ " shaft sleeve	P52350	P52350	P52350		
14	Impeller Capscrew 1 ⁵ / ₈ " shaft sleeve	P13800	P13800	P13800		
13	Impeller Lockwasher 1 ¹ / ₄ " shaft sleeve	J23874	J23874	J23874		
13	Impeller Lockwasher 1 ⁵ / ₈ " shaft sleeve	J23875	J23875	J23875		
3	Impeller Washer 1 ¹ / ₄ " shaft sleeve	P46390	P46390	P46381		
3	Impeller Washer 1 ⁵ / ₈ " shaft sleeve	P51250	P51250	P46382		
9	Impeller Key 1 ¹ / ₄ " shaft sleeve	P49369	P49369	P49369		
9	Impeller Key 1 ⁵ / ₈ " shaft sleeve	P49372	P49372	P49372		
1	Volute	P43255	*P43871	P43255		
	Wear Ring	—	P49141	—		
15	Volute Drain Plug (4)	P39040	P39040	P39050		
11	Volute Capscrew (8)**	P40020	P40020	P40020		
2	Volute Gasket	P57700	P57700	P57700		
8	Water Slinger 1 ¹ / ₄ " shaft sleeve	P53550	P53550	P53550		
PARTS FOR STANDARD SEAL CONSTRUCTION						
5	Motor Bracket – Motor Frames 143JM-145JM, 182JM-184JM	186526	186526	186526	Not Offered	
6	Motor Bracket Capscrew for above (4)	P40020	P40020	P40020		
5	Motor Bracket – Motor Frames 213JM-215JM	186528	186528	186528		
6	Motor Bracket Capscrew for above (4)	K03600	K03600	K03600		
5	Motor Bracket – Motor Frames 254JP-256JP	P77076	P77076	P77076		
6	Motor Bracket Capscrew for above (4)	P13780	P13780	P13780		
5	Motor Bracket – Motor Frames 284JP-286JP, 324JP-326JP	P53880	P53880	P53880		
6	Motor Bracket Capscrew for above (4)	P19490	P19490	P19490		
12	Seal Kit Buna/Carbon/Ceramic 1 ¹ / ₄ " shaft sleeve	186862LF	186862LF	186860		
12	Seal Kit Buna/Carbon/Ceramic 1 ⁵ / ₈ " shaft sleeve	186543LF	186543LF	186544		
12	Seal Kit EPR/Carbon/Tungsten Carbide 1 ¹ / ₄ " shaft sleeve	186861LF	186861LF	—		
12	Seal Kit EPR/Carbon/Tungsten Carbide 1 ⁵ / ₈ " shaft sleeve	185225LF	185225LF	—		
7	Shaft Sleeve Kit 1 ¹ / ₄ " shaft sleeve	185024LF	185024LF	185025		
7	Shaft Sleeve Kit 1 ⁵ / ₈ " shaft sleeve	185021LF	185021LF	185022		
8	Water Slinger 1 ⁵ / ₈ " shaft sleeve	P53720	P53720	P53720		
PARTS FOR STUFFING BOX CONSTRUCTION						
5	Motor Bracket – Motor Frames 143JP-145JP, 182JP-184JP	P85023	P85023	P85023		Not Offered
6	Motor Bracket Capscrew for above (4)	P52320	P52320	P52320		
5	Motor Bracket – Motor Frames 213JP-215JP, 254JP-256JP	P85025	P85025	P85025		
6	Motor Bracket Capscrew for above (4)	K03600	K03600	K03600		
5	Motor Bracket – Motor Frames 284JP-286JP, 324JP-326JP	P85099	P85099	P85099		
6	Motor Bracket Capscrew for above (4)	P19490	P19490	P19490		
	Packing	See Table C or D, Page 41				
	Single Seal Components	See Table A, Page 41				
	Double Seal Components	See Table B, Page 41				
	Shaft Sleeve	See Table A, B, C or D, Page 41				
29	Volute Coverplate 1 ¹ / ₄ " shaft sleeve	P85027	P85027	P85027		
16	Volute Coverplate Capscrew for above (4)	P40020	P40020	P40020		
29	Volute Coverplate 1 ⁵ / ₈ " shaft sleeve	P85035	P85035	P85035		
16	Volute Coverplate Capscrew for above (8)	DJ0081	DJ0081	DJ0081		
1	Volute-250 PSI Operation for -S and -PF Seals only	P43256	*P43875	P43256		
8	Water Slinger 1 ⁵ / ₈ " shaft sleeve	P77320	P77320	P77320		

NOTE: 1¹/₄" Shaft Sleeve - up to and including motor frame 215JM
1⁵/₈" Shaft Sleeve - motor frame 213JP and larger.

* Includes Wear Ring.

**Not required on Stuffing Box Construction with 1⁵/₈" shaft sleeve.

— Factory recommended spare parts.

5A

ITEM NO.	DESCRIPTION	PUMP CONSTRUCTION			
		BRONZE FITTED	BRONZE FITTED WITH WEAR RING	ALL IRON	ALL BRONZE
PARTS COMMON TO BOTH TYPES					
4	Impeller (state diameter) 7" full dia. 1 ¹ / ₄ " shaft sleeve	P50802	P50802	P50804	Not Offered
4	Impeller (state diameter) 7" full dia. 1 ⁵ / ₈ " shaft sleeve	P50812	P50812	P50814	
14	Impeller Capscrew 1 ¹ / ₄ " shaft sleeve	P52350	P52350	P52350	
14	Impeller Capscrew 1 ⁵ / ₈ " shaft sleeve	P13800	P13800	P13800	
13	Impeller Lockwasher 1 ¹ / ₄ " shaft sleeve	J23874	J23874	J23874	
13	Impeller Lockwasher 1 ⁵ / ₈ " shaft sleeve	J23875	J23875	J23875	
3	Impeller Washer 1 ¹ / ₄ " shaft sleeve	P46390	P46390	P46381	
3	Impeller Washer 1 ⁵ / ₈ " shaft sleeve	P51250	P51250	P46382	
9	Impeller Key 1 ¹ / ₄ " shaft sleeve	P49369	P49369	P49369	
9	Impeller Key 1 ⁵ / ₈ " shaft sleeve	P49372	P49372	P49372	
1	Volute	P43672	*P43872	P43672	
	Wear Ring	—	P49142	—	
15	Volute Drain Plug (4)	P39040	P39040	P39050	
11	Volute Capscrew (8)**	P40020	P40020	P40020	
2	Volute Gasket	P57700	P57700	P57700	
8	Water Slinger 1 ¹ / ₄ " shaft sleeve	P53550	P53550	P53550	
PARTS FOR STANDARD SEAL CONSTRUCTION					
5	Motor Bracket – Motor Frames 182JM-184JM	186526	186526	186526	Not Offered
6	Motor Bracket Capscrew for above (4)	P40020	P40020	P40020	
5	Motor Bracket – Motor Frames 213JM-215JM	186528	186528	186528	
6	Motor Bracket Capscrew for above (4)	K03600	K03600	K03600	
5	Motor Bracket – Motor Frames 254JP-256JP	P77076	P77076	P77076	
6	Motor Bracket Capscrew for above (4)	P13780	P13780	P13780	
5	Motor Bracket – Motor Frames 284JP-286JP, 324JP-326JP	P53880	P53880	P53880	
6	Motor Bracket Capscrew for above (4)	P19490	P19490	P19490	
12	Seal Kit Buna/Carbon/Ceramic 1 ¹ / ₄ " shaft sleeve	186862LF	186862LF	186860	
12	Seal Kit Buna/Carbon/Ceramic 1 ⁵ / ₈ " shaft sleeve	186543LF	186543LF	186544	
12	Seal Kit EPR/Carbon/Tungsten Carbide 1 ¹ / ₄ " shaft sleeve	186861LF	186861LF	—	
12	Seal Kit EPR/Carbon/Tungsten Carbide 1 ⁵ / ₈ " shaft sleeve	185225LF	185225LF	—	
7	Shaft Sleeve Kit 1 ¹ / ₄ " shaft sleeve	185024LF	185024LF	185025	
7	Shaft Sleeve Kit 1 ⁵ / ₈ " shaft sleeve	185021LF	185021LF	185022	
8	Water Slinger 1 ⁵ / ₈ " shaft sleeve	P53720	P53720	P53720	
PARTS FOR STUFFING BOX CONSTRUCTION					
5	Motor Bracket – Motor Frames 182JP-184JP	P85023	P85023	P85023	Not Offered
6	Motor Bracket Capscrew for above (4)	P52320	P52320	P52320	
5	Motor Bracket – Motor Frames 213JP-215JP, 254JP-256JP	P85025	P85025	P85025	
6	Motor Bracket Capscrew for above (4)	K03600	K03600	K03600	
5	Motor Bracket – Motor Frames 284JP-286JP, 324JP-326JP	P85099	P85099	P85099	
6	Motor Bracket Capscrew for above (4)	P19490	P19490	P19490	
	Packing	See Table C or D, Page 41			
	Single Seal Components	See Table A, Page 41			
	Double Seal Components	See Table B, Page 41			
	Shaft Sleeve	See Table A, B, C or D, Page 41			
29	Volute Coverplate 1 ¹ / ₄ " shaft sleeve	P85027	P85027	P85027	
16	Volute Coverplate Capscrew for above (4)	P40020	P40020	P40020	
29	Volute Coverplate 1 ⁵ / ₈ " shaft sleeve	P85035	P85035	P85035	
16	Volute Coverplate Capscrew for above (8)	DJ0081	DJ0081	DJ0081	
1	Volute-250 PSI Operation for -S and -PF Seals only	P43673	*P43876	P43673	
8	Water Slinger 1 ⁵ / ₈ " shaft sleeve	P77320	P77320	P77320	

NOTE: 1¹/₄" Shaft Sleeve - up to and including motor frame 215JM
1⁵/₈" Shaft Sleeve - motor frame 213JP and larger.

* Includes Wear Ring.

**Not required on Stuffing Box Construction with 1⁵/₈" shaft sleeve.

— Factory recommended spare parts.

1 1/4BB

ITEM NO.	DESCRIPTION	PUMP CONSTRUCTION			
		BRONZE FITTED	BRONZE FITTED WITH WEAR RING	ALL IRON	ALL BRONZE
PARTS COMMON TO BOTH TYPES					
4	Impeller (state diameter) 9 1/2" full dia. 1 1/4" shaft sleeve	P78523	P78523	P78253	P78523
4	Impeller (state diameter) 9 1/2" full dia. 1 5/8" shaft sleeve	P78251	P78251	P78522	P78251
14	Impeller Capscrew 1 1/4" shaft sleeve	P52350	P52350	P52350	P52350
14	Impeller Capscrew 1 5/8" shaft sleeve	P13800	P13800	P13800	P13800
13	Impeller Lockwasher 1 1/4" shaft sleeve	J23874	J23874	J23874	J23874
13	Impeller Lockwasher 1 5/8" shaft sleeve	J23875	J23875	J23875	J23875
3	Impeller Washer 1 1/4" shaft sleeve	P46390	P46390	P46381	P46390
3	Impeller Washer 1 5/8" shaft sleeve	P51250	P51250	P46382	P51250
9	Impeller Key 1 1/4" shaft sleeve	P49369	P49369	P49369	P49369
9	Impeller Key 1 5/8" shaft sleeve	P49372	P49372	P49372	P49372
1	Volute	N/A†	N/A†	N/A†	N/A†
	Wear Ring	—	P48660	—	—
15	Volute Drain Plug (4)	P39020	P39020	P39030	P39470
11	Volute Capscrew (12) for Frame Sizes thru 256JP	P03470	P03470	P03470	S04180
11	Volute Capscrew (12) for Frame Sizes 284JP and Larger	P54700	P54700	P54700	P54710
2	Volute Gasket	P48690	P48690	P48690	P48690
8	Water Slinger 1 1/4" shaft sleeve	P53550	P53550	P53550	P53550
PARTS FOR STANDARD SEAL CONSTRUCTION					
5	Motor Bracket – Motor Frames 143JM-145JM, 182JM-184JM	186533	186533	186533	P56969
6	Motor Bracket Capscrew for above (4)	P40020	P40020	P40020	P40020
5	Motor Bracket – Motor Frames 213JM-215JM	186530	186530	186530	P56949
6	Motor Bracket Capscrew for above (4)	K03600	K03600	K03600	K03600
5	Motor Bracket – Motor Frames 254JP-256JP	P77166	P77166	P77166	P77169
6	Motor Bracket Capscrew for above (4)	P13780	P13780	P13780	P13780
5	Motor Bracket – Motor Frames 284JP-286JP	P53500	P53500	P53500	P53540
6	Motor Bracket Capscrew for above (4)	P19490	P19490	P19490	P19490
12	Seal Kit Buna/Carbon/Ceramic 1 1/4" shaft sleeve	186862LF	186862LF	186860	186862LF
12	Seal Kit Buna/Carbon/Ceramic 1 5/8" shaft sleeve	186543LF	186543LF	186544	186543LF
12	Seal Kit EPR/Carbon/Tungsten Carbide 1 1/4" shaft sleeve	186861LF	186861LF	—	186861LF
12	Seal Kit EPR/Carbon/Tungsten Carbide 1 5/8" shaft sleeve	185225LF	185225LF	—	185225LF
7	Shaft Sleeve Kit 1 1/4" shaft sleeve	185024LF	185024LF	185025	185024LF
7	Shaft Sleeve Kit 1 5/8" shaft sleeve	185021LF	185021LF	185022	185021LF
8	Water Slinger 1 5/8" shaft sleeve	P53720	P53720	P53720	P53720
PARTS FOR STUFFING BOX CONSTRUCTION					
5	Motor Bracket – Motor Frames 143JP-145JP, 182JP-184JP	P85023	P85023	P85023	Not Offered
6	Motor Bracket Capscrew for above (4)	P52320	P52320	P52320	
5	Motor Bracket – Motor Frames 213JP-215JP, 254JP-256JP	P85025	P85025	P85025	
6	Motor Bracket Capscrew for above (4)	K03600	K03600	K03600	
5	Motor Bracket – Motor Frames 284JP-286JP	P85099	P85099	P85099	
6	Motor Bracket Capscrew for above (4)	P19490	P19490	P19490	
	Packing	See Table C or D, Page 41			
	Single Seal Components	See Table A, Page 41			
	Double Seal Components	See Table B, Page 41			
	Shaft Sleeve	See Table A, B, C or D, Page 41			
29	Volute Coverplate 1 1/4" shaft sleeve	P85031	P85031	P85031	
16	Volute Coverplate Capscrew for above (4)	P40020	P40020	P40020	
29	Volute Coverplate 1 5/8" shaft sleeve	P85039	P85039	P85039	
16	Volute Coverplate Capscrew for above (8)	P52320	P52320	P52320	
1	Volute-250 PSI Operation for -S and -PF Seals only	Not Offered			
8	Water Slinger 1 5/8" shaft sleeve	P77320	P77320	P77320	

NOTE: 1 1/4" Shaft Sleeve - up to and including motor frame 215JM
1 5/8" Shaft Sleeve - motor frame 213JP and larger.

— Factory recommended spare parts.

N/A - NO LONGER AVAILABLE

†The impeller and/or volute are no longer available. This pump can be converted to the current style pump by ordering both the current style impeller and the current style volute.

1 1/4 BC

ITEM NO.	DESCRIPTION	PUMP CONSTRUCTION			
		BRONZE FITTED	BRONZE FITTED WITH WEAR RING	ALL IRON	ALL BRONZE
PARTS COMMON TO BOTH TYPES					
4	Impeller (state diameter) 9 1/2" full dia. 1 1/4" shaft sleeve	P50666	P50666	P50678	P50666
4	Impeller (state diameter) 9 1/2" full dia. 1 5/8" shaft sleeve	P50674	P50674	P50682	P50674
14	Impeller Capscrew 1 1/4" shaft sleeve	P52350	P52350	P52350	P52350
14	Impeller Capscrew 1 5/8" shaft sleeve	P13800	P13800	P13800	P13800
13	Impeller Lockwasher 1 1/4" shaft sleeve	J23874	J23874	J23874	J23874
13	Impeller Lockwasher 1 5/8" shaft sleeve	J23875	J23875	J23875	J23875
3	Impeller Washer 1 1/4" shaft sleeve	P46390	P46390	P46381	P46390
3	Impeller Washer 1 5/8" shaft sleeve	P51250	P51250	P46382	P51250
9	Impeller Key 1 1/4" shaft sleeve	P49369	P49369	P49369	P49369
9	Impeller Key 1 5/8" shaft sleeve	P49372	P49372	P49372	P49372
1	Volute	P41624	*P44152	P41624	P41626
	Wear Ring	—	P46700	—	—
15	Volute Drain Plug (4)	P39020	P39020	P39030	P39470
11	Volute Capscrew (12) for Frame Sizes thru 256JP	P03470	P03470	P03470	S04180
11	Volute Capscrew (12) for Frame Sizes 284JP and Larger	P54700	P54700	P54700	P54710
2	Volute Gasket	P48690	P48690	P48690	P48690
8	Water Slinger 1 1/4" shaft sleeve	P53550	P53550	P53550	P53550
PARTS FOR STANDARD SEAL CONSTRUCTION					
5	Motor Bracket – Motor Frames 143JM-145JM, 182JM-184JM	186533	186533	186533	P56969
6	Motor Bracket Capscrew for above (4)	P40020	P40020	P40020	P40020
5	Motor Bracket – Motor Frames 213JM-215JM	186530	186530	186530	P56949
6	Motor Bracket Capscrew for above (4)	K03600	K03600	K03600	K03600
5	Motor Bracket – Motor Frames 254JP-256JP	P77166	P77166	P77166	P77169
6	Motor Bracket Capscrew for above (4)	P13780	P13780	P13780	P13780
5	Motor Bracket – Motor Frames 284JP-286JP	P53500	P53500	P53500	P53540
6	Motor Bracket Capscrew for above (4)	P19490	P19490	P19490	P19490
12	Seal Kit Buna/Carbon/Ceramic 1 1/4" shaft sleeve	186862LF	186862LF	186860	186862LF
12	Seal Kit Buna/Carbon/Ceramic 1 5/8" shaft sleeve	186543LF	186543LF	186544	186543LF
12	Seal Kit EPR/Carbon/Tungsten Carbide 1 1/4" shaft sleeve	186861LF	186861LF	—	186861LF
12	Seal Kit EPR/Carbon/Tungsten Carbide 1 5/8" shaft sleeve	185225LF	185225LF	—	185225LF
7	Shaft Sleeve Kit 1 1/4" shaft sleeve	185024LF	185024LF	185025	185024LF
7	Shaft Sleeve Kit 1 5/8" shaft sleeve	185021LF	185021LF	185022	185021LF
8	Water Slinger 1 5/8" shaft sleeve	P53720	P53720	P53720	P53720
PARTS FOR STUFFING BOX CONSTRUCTION					
5	Motor Bracket – Motor Frames 143JP-145JP, 182JP-184JP	P85023	P85023	P85023	Not Offered
6	Motor Bracket Capscrew for above (4)	P52320	P52320	P52320	
5	Motor Bracket – Motor Frames 213JP-215JP, 254JP-256JP	P85025	P85025	P85025	
6	Motor Bracket Capscrew for above (4)	K03600	K03600	K03600	
5	Motor Bracket – Motor Frames 284JP-286JP	P85099	P85099	P85099	
6	Motor Bracket Capscrew for above (4)	P19490	P19490	P19490	
	Packing	See Table C or D, Page 38			
	Single Seal Components	See Table A, Page 38			
	Double Seal Components	See Table B, Page 38			
	Shaft Sleeve	See Table A, B, C or D, Page 38			
29	Volute Coverplate 1 1/4" shaft sleeve	P85031	P85031	P85031	
16	Volute Coverplate Capscrew for above (4)	P40020	P40020	P40020	
29	Volute Coverplate 1 5/8" shaft sleeve	P85039	P85039	P85039	
16	Volute Coverplate Capscrew for above (8)	P52320	P52320	P52320	
1	Volute-250 PSI Operation for -S and -PF Seals only	Not Offered			
8	Water Slinger 1 5/8" shaft sleeve	P77320	P77320	P77320	

NOTE: 1 1/4" Shaft Sleeve - up to and including motor frame 215JM * Includes Wear Ring

1 5/8" Shaft Sleeve - motor frame 213JP and larger.

— Factory recommended spare parts.

1 1/2 BB

ITEM NO.	DESCRIPTION	PUMP CONSTRUCTION			
		BRONZE FITTED	BRONZE FITTED WITH WEAR RING	ALL IRON	ALL BRONZE
PARTS COMMON TO BOTH TYPES					
4	Impeller (state diameter) 9/2" full dia. 1 1/4" shaft sleeve	P78523	P78523	P78253	P78523
4	Impeller (state diameter) 9/2" full dia. 1 5/8" shaft sleeve	P78251	P78251	P78522	P78251
14	Impeller Capscrew 1 1/4" shaft sleeve	P52350	P52350	P52350	P52350
14	Impeller Capscrew 1 5/8" shaft sleeve	P13800	P13800	P13800	P13800
13	Impeller Lockwasher 1 1/4" shaft sleeve	J23874	J23874	J23874	J23874
13	Impeller Lockwasher 1 5/8" shaft sleeve	J23875	J23875	J23875	J23875
3	Impeller Washer 1 1/4" shaft sleeve	P46390	P46390	P46381	P46390
3	Impeller Washer 1 5/8" shaft sleeve	P51250	P51250	P46382	P51250
9	Impeller Key 1 1/4" shaft sleeve	P49369	P49369	P49369	P49369
9	Impeller Key 1 5/8" shaft sleeve	P49372	P49372	P49372	P49372
1	Volute	P41820	*P44159	P41820	P41840
	Wear Ring	—	P48660	—	—
15	Volute Drain Plug (4)	P39020	P39020	P39030	P39470
11	Volute Capscrew (12) for Frame Sizes thru 256JP	P03470	P03470	P03470	S04180
11	Volute Capscrew (12) for Frame Sizes 284JP and Larger	P54700	P54700	P54700	P54710
2	Volute Gasket	P48690	P48690	P48690	P48690
8	Water Slinger 1 1/4" shaft sleeve	P53550	P53550	P53550	P53550
PARTS FOR STANDARD SEAL CONSTRUCTION					
5	Motor Bracket – Motor Frames 143JM-145JM, 182JM-184JM	186533	186533	186533	P56969
6	Motor Bracket Capscrew for above (4)	P40020	P40020	P40020	P40020
5	Motor Bracket – Motor Frames 213JM-215JM	186530	186530	186530	P56949
6	Motor Bracket Capscrew for above (4)	K03600	K03600	K03600	K03600
5	Motor Bracket – Motor Frames 254JP-256JP	P77166	P77166	P77166	P77169
6	Motor Bracket Capscrew for above (4)	P13780	P13780	P13780	P13780
5	Motor Bracket – Motor Frames 284JP-286JP, 324JP-326JP	P53500	P53500	P53500	P53540
6	Motor Bracket Capscrew for above (4)	P19490	P19490	P19490	P19490
12	Seal Kit Buna/Carbon/Ceramic 1 1/4" shaft sleeve	186862LF	186862LF	186860	186862LF
12	Seal Kit Buna/Carbon/Ceramic 1 5/8" shaft sleeve	186543LF	186543LF	186544	186543LF
12	Seal Kit EPR/Carbon/Tungsten Carbide 1 1/4" shaft sleeve	186861LF	186861LF	—	186861LF
12	Seal Kit EPR/Carbon/Tungsten Carbide 1 5/8" shaft sleeve	185225LF	185225LF	—	185225LF
7	Shaft Sleeve Kit 1 1/4" shaft sleeve	185024LF	185024LF	185025	185024LF
7	Shaft Sleeve Kit 1 5/8" shaft sleeve	185021LF	185021LF	185022	185021LF
8	Water Slinger 1 5/8" shaft sleeve	P53720	P53720	P53720	P53720
PARTS FOR STUFFING BOX CONSTRUCTION					
5	Motor Bracket – Motor Frames 143JP-145JP, 182JP-184JP	P85023	P85023	P85023	Not Offered
6	Motor Bracket Capscrew for above (4)	P52320	P52320	P52320	
5	Motor Bracket – Motor Frames 213JP-215JP, 254JP-256JP	P85025	P85025	P85025	
6	Motor Bracket Capscrew for above (4)	K03600	K03600	K03600	
5	Motor Bracket – Motor Frames 284JP-286JP, 324JP-326JP	P85099	P85099	P85099	
6	Motor Bracket Capscrew for above (4)	P19490	P19490	P19490	
	Packing	See Table C or D, Page 41			
	Single Seal Components	See Table A, Page 41			
	Double Seal Components	See Table B, Page 41			
	Shaft Sleeve	See Table A, B, C or D, Page 41			
29	Volute Coverplate 1 1/4" shaft sleeve	P85031	P85031	P85031	
16	Volute Coverplate Capscrew for above (4)	P40020	P40020	P40020	
29	Volute Coverplate 1 5/8" shaft sleeve	P85039	P85039	P85039	
16	Volute Coverplate Capscrew for above (8)	P52320	P52320	P52320	
1	Volute-250 PSI Operation for -S and -PF Seals only	Not Offered			
8	Water Slinger 1 5/8" shaft sleeve	P77320	P77320	P77320	

NOTE: 1 1/4" Shaft Sleeve - up to and including motor frame 215JM
 1 5/8" Shaft Sleeve - motor frame 213JP and larger.

— Factory recommended spare parts.

* Includes Wear Ring.

1 1/2 BC

ITEM NO.	DESCRIPTION	PUMP CONSTRUCTION			
		BRONZE FITTED	BRONZE FITTED WITH WEAR RING	ALL IRON	ALL BRONZE
PARTS COMMON TO BOTH TYPES					
4	Impeller (state diameter) 9 1/2" full dia. 1 1/4" shaft sleeve	P78523	P78523	P78253	P78523
4	Impeller (state diameter) 9 1/2" full dia. 1 5/8" shaft sleeve	P78251	P78251	P78522	P78251
14	Impeller Capscrew 1 1/4" shaft sleeve	P52350	P52350	P52350	P52350
14	Impeller Capscrew 1 5/8" shaft sleeve	P13800	P13800	P13800	P13800
13	Impeller Lockwasher 1 1/4" shaft sleeve	J23874	J23874	J23874	J23874
13	Impeller Lockwasher 1 5/8" shaft sleeve	J23875	J23875	J23875	J23875
3	Impeller Washer 1 1/4" shaft sleeve	P46390	P46390	P46381	P46390
3	Impeller Washer 1 5/8" shaft sleeve	P51250	P51250	P46382	P51250
9	Impeller Key 1 1/4" shaft sleeve	P49369	P49369	P49369	P49369
9	Impeller Key 1 5/8" shaft sleeve	P49372	P49372	P49372	P49372
1	Volute	P41820	*P44159	P41820	P41840
	Wear Ring	—	P48660	—	—
15	Volute Drain Plug (4)	P39020	P39020	P39030	P39470
11	Volute Capscrew (12) for Frame Sizes thru 256JP	P03470	P03470	P03470	S04180
11	Volute Capscrew (12) for Frame Sizes 284JP and Larger	P54700	P54700	P54700	P54710
2	Volute Gasket	P48690	P48690	P48690	P48690
8	Water Slinger 1 1/4" shaft sleeve	P53550	P53550	P53550	P53550
PARTS FOR STANDARD SEAL CONSTRUCTION					
5	Motor Bracket – Motor Frames 143JM-145JM, 182JM-184JM	186533	186533	186533	P56969
6	Motor Bracket Capscrew for above (4)	P40020	P40020	P40020	P40020
5	Motor Bracket – Motor Frames 213JM-215JM	186530	186530	186530	P56949
6	Motor Bracket Capscrew for above (4)	K03600	K03600	K03600	K03600
5	Motor Bracket – Motor Frames 254JP-256JP	P77166	P77166	P77166	P77169
6	Motor Bracket Capscrew for above (4)	P13780	P13780	P13780	P13780
5	Motor Bracket – Motor Frames 284JP-286JP, 324JP-326JP	P53500	P53500	P53500	P53540
6	Motor Bracket Capscrew for above (4)	P19490	P19490	P19490	P19490
12	Seal Kit Buna/Carbon/Ceramic 1 1/4" shaft sleeve	186862LF	186862LF	186860	186862LF
12	Seal Kit Buna/Carbon/Ceramic 1 5/8" shaft sleeve	186543LF	186543LF	186544	186543LF
12	Seal Kit EPR/Carbon/Tungsten Carbide 1 1/4" shaft sleeve	186861LF	186861LF	—	186861LF
12	Seal Kit EPR/Carbon/Tungsten Carbide 1 5/8" shaft sleeve	185225LF	185225LF	—	185225LF
7	Shaft Sleeve Kit 1 1/4" shaft sleeve	185024LF	185024LF	185025	185024LF
7	Shaft Sleeve Kit 1 5/8" shaft sleeve	185021LF	185021LF	185022	185021LF
8	Water Slinger 1 5/8" shaft sleeve	P53720	P53720	P53720	P53720
PARTS FOR STUFFING BOX CONSTRUCTION					
5	Motor Bracket – Motor Frames 143JP-145JP, 182JP-184JP	P85023	P85023	P85023	Not Offered
6	Motor Bracket Capscrew for above (4)	P52320	P52320	P52320	
5	Motor Bracket – Motor Frames 213JP-215JP, 254JP-256JP	P85025	P85025	P85025	
6	Motor Bracket Capscrew for above (4)	K03600	K03600	K03600	
5	Motor Bracket – Motor Frames 284JP-286JP, 324JP-326JP	P85099	P85099	P85099	
6	Motor Bracket Capscrew for above (4)	P19490	P19490	P19490	
	Packing	See Table C or D, Page 41			
	Single Seal Components	See Table A, Page 41			
	Double Seal Components	See Table B, Page 41			
	Shaft Sleeve	See Table A, B, C or D, Page 41			
29	Volute Coverplate 1 1/4" shaft sleeve	P85031	P85031	P85031	
16	Volute Coverplate Capscrew for above (4)	P40020	P40020	P40020	
29	Volute Coverplate 1 5/8" shaft sleeve	P85039	P85039	P85039	
16	Volute Coverplate Capscrew for above (8)	P52320	P52320	P52320	
1	Volute-250 PSI Operation for -S and -PF Seals only	Not Offered			
8	Water Slinger 1 5/8" shaft sleeve	P77320	P77320	P77320	

NOTE: 1 1/4" Shaft Sleeve - up to and including motor frame 215JM
1 5/8" Shaft Sleeve - motor frame 213JP and larger.

* Includes Wear Ring.

— Factory recommended spare parts.

2BB

ITEM NO.	DESCRIPTION	PUMP CONSTRUCTION			
		BRONZE FITTED	BRONZE FITTED WITH WEAR RING	ALL IRON	ALL BRONZE
PARTS COMMON TO BOTH TYPES					
4	Impeller (state diameter) 9 $\frac{1}{2}$ " full dia. 1 $\frac{1}{4}$ " shaft sleeve	P78525	P78525	P78486	P78525
4	Impeller (state diameter) 9 $\frac{1}{2}$ " full dia. 1 $\frac{5}{8}$ " shaft sleeve	P78255	P78255	N/A†	P78255
14	Impeller Capscrew 1 $\frac{1}{4}$ " shaft sleeve	P52350	P52350	P52350	P52350
14	Impeller Capscrew 1 $\frac{5}{8}$ " shaft sleeve	P13800	P13800	P13800	P13800
13	Impeller Lockwasher 1 $\frac{1}{4}$ " shaft sleeve	J23874	J23874	J23874	J23874
13	Impeller Lockwasher 1 $\frac{5}{8}$ " shaft sleeve	J23875	J23875	J23875	J23875
3	Impeller Washer 1 $\frac{1}{4}$ " shaft sleeve	P46390	P46390	P46381	P46390
3	Impeller Washer 1 $\frac{5}{8}$ " shaft sleeve	P51250	P51250	P46382	P51250
9	Impeller Key 1 $\frac{1}{4}$ " shaft sleeve	P49369	P49369	P49369	P49369
9	Impeller Key 1 $\frac{5}{8}$ " shaft sleeve	P49372	P49372	P49372	P49372
1	Volute	N/A†	N/A†	N/A†	N/A†
	Wear Ring	—	P49130	—	—
15	Volute Drain Plug (4)	P39040	P39040	P39050	P39480
11	Volute Capscrew (12) for Frame Sizes thru 256JP	P03470	P03470	P03470	S04180
11	Volute Capscrew (12) for Frame Sizes 284JP and Larger	P54700	P54700	P54700	P54710
2	Volute Gasket	P48690	P48690	P48690	P48690
8	Water Slinger 1 $\frac{1}{4}$ " shaft sleeve	P53550	P53550	P53550	P53550
PARTS FOR STANDARD SEAL CONSTRUCTION					
5	Motor Bracket – Motor Frames 143JM-145JM, 182JM-184JM	186533	186533	186533	P56969
6	Motor Bracket Capscrew for above (4)	P40020	P40020	P40020	P40020
5	Motor Bracket – Motor Frames 213JM-215JM	186530	186530	186530	P56949
6	Motor Bracket Capscrew for above (4)	K03600	K03600	K03600	K03600
5	Motor Bracket – Motor Frames 254JP-256JP	P77166	P77166	P77166	P77169
6	Motor Bracket Capscrew for above (4)	P13780	P13780	P13780	P13780
5	Motor Bracket – Motor Frames 284JP-286JP, 324JP-326JP	P53500	P53500	P53500	P53540
6	Motor Bracket Capscrew for above (4)	P19490	P19490	P19490	P19490
12	Seal Kit Buna/Carbon/Ceramic 1 $\frac{1}{4}$ " shaft sleeve	186862LF	186862LF	186860	186862LF
12	Seal Kit Buna/Carbon/Ceramic 1 $\frac{5}{8}$ " shaft sleeve	186543LF	186543LF	186544	186543LF
12	Seal Kit EPR/Carbon/Tungsten Carbide 1 $\frac{1}{4}$ " shaft sleeve	186861LF	186861LF	—	186861LF
12	Seal Kit EPR/Carbon/Tungsten Carbide 1 $\frac{5}{8}$ " shaft sleeve	185225LF	185225LF	—	185225LF
7	Shaft Sleeve Kit 1 $\frac{1}{4}$ " shaft sleeve	185024LF	185024LF	185025	185024LF
7	Shaft Sleeve Kit 1 $\frac{5}{8}$ " shaft sleeve	185021LF	185021LF	185022	185021LF
8	Water Slinger 1 $\frac{5}{8}$ " shaft sleeve	P53720	P53720	P53720	P53720
PARTS FOR STUFFING BOX CONSTRUCTION					
5	Motor Bracket – Motor Frames 143JP-145JP, 182JP-184JP	P85023	P85023	P85023	Not Offered
6	Motor Bracket Capscrew for above (4)	P52320	P52320	P52320	
5	Motor Bracket – Motor Frames 213JP-215JP, 254JP-256JP	P85025	P85025	P85025	
6	Motor Bracket Capscrew for above (4)	K03600	K03600	K03600	
5	Motor Bracket – Motor Frames 284JP-286JP, 324JP-326JP	P85099	P85099	P85099	
6	Motor Bracket Capscrew for above (4)	P19490	P19490	P19490	
	Packing	See Table C or D, Page 41			
	Single Seal Components	See Table A, Page 41			
	Double Seal Components	See Table B, Page 41			
	Shaft Sleeve	See Table A, B, C or D, Page 41			
29	Volute Coverplate 1 $\frac{1}{4}$ " shaft sleeve	P85031	P85031	P85031	
16	Volute Coverplate Capscrew for above (4)	P40020	P40020	P40020	
29	Volute Coverplate 1 $\frac{5}{8}$ " shaft sleeve	P85039	P85039	P85039	
16	Volute Coverplate Capscrew for above (8)	P52320	P52320	P52320	
1	Volute-250 PSI Operation for -S and -PF Seals only	Not Offered			
8	Water Slinger 1 $\frac{5}{8}$ " shaft sleeve	P77320	P77320	P77320	

NOTE: 1 $\frac{1}{4}$ " Shaft Sleeve - up to and including motor frame 215JM
1 $\frac{5}{8}$ " Shaft Sleeve - motor frame 213JP and larger.

— Factory recommended spare parts.

N/A – NO LONGER AVAILABLE

†The impeller and/or volute are no longer available. This pump can be converted to the current style pump by ordering both the current style impeller and the current style volute.

2BC

ITEM NO.	DESCRIPTION	PUMP CONSTRUCTION			
		BRONZE FITTED	BRONZE FITTED WITH WEAR RING	ALL IRON	ALL BRONZE
PARTS COMMON TO BOTH TYPES					
4	Impeller (state diameter) 9 $\frac{1}{2}$ " full dia. 1 $\frac{1}{4}$ " shaft sleeve	P50700	P50700	P50712	P50700
4	Impeller (state diameter) 9 $\frac{1}{2}$ " full dia. 1 $\frac{5}{8}$ " shaft sleeve	P50707	P50707	P50714	P50707
14	Impeller Capscrew 1 $\frac{1}{4}$ " shaft sleeve	P52350	P52350	P52350	P52350
14	Impeller Capscrew 1 $\frac{5}{8}$ " shaft sleeve	P13800	P13800	P13800	P13800
13	Impeller Lockwasher 1 $\frac{1}{4}$ " shaft sleeve	J23874	J23874	J23874	J23874
13	Impeller Lockwasher 1 $\frac{5}{8}$ " shaft sleeve	J23875	J23875	J23875	J23875
3	Impeller Washer 1 $\frac{1}{4}$ " shaft sleeve	P46390	P46390	P46381	P46390
3	Impeller Washer 1 $\frac{5}{8}$ " shaft sleeve	P51250	P51250	P46382	P51250
9	Impeller Key 1 $\frac{1}{4}$ " shaft sleeve	P49369	P49369	P49369	P49369
9	Impeller Key 1 $\frac{5}{8}$ " shaft sleeve	P49372	P49372	P49372	P49372
1	Volute	P42268	*P44154	P42268	P42272
	Wear Ring	—	P49130	—	—
15	Volute Drain Plug (4)	P39040	P39040	P39050	P39480
11	Volute Capscrew (12) for Frame Sizes thru 256JP	P03470	P03470	P03470	S04180
11	Volute Capscrew (12) for Frame Sizes 284JP and Larger	P54700	P54700	P54700	P54710
2	Volute Gasket	P48690	P48690	P48690	P48690
8	Water Slinger 1 $\frac{1}{4}$ " shaft sleeve	P53550	P53550	P53550	P53550
PARTS FOR STANDARD SEAL CONSTRUCTION					
5	Motor Bracket – Motor Frames 143JM-145JM, 182JM-184JM	186533	186533	186533	P56969
6	Motor Bracket Capscrew for above (4)	P40020	P40020	P40020	P40020
5	Motor Bracket – Motor Frames 213JM-215JM	186530	186530	186530	P56949
6	Motor Bracket Capscrew for above (4)	K03600	K03600	K03600	K03600
5	Motor Bracket – Motor Frames 254JP-256JP	P77166	P77166	P77166	P77169
6	Motor Bracket Capscrew for above (4)	P13780	P13780	P13780	P13780
5	Motor Bracket – Motor Frames 284JP-286JP, 324JP-326JP	P53500	P53500	P53500	P53540
6	Motor Bracket Capscrew for above (4)	P19490	P19490	P19490	P19490
12	Seal Kit Buna/Carbon/Ceramic 1 $\frac{1}{4}$ " shaft sleeve	186862LF	186862LF	186860	186862LF
12	Seal Kit Buna/Carbon/Ceramic 1 $\frac{5}{8}$ " shaft sleeve	186543LF	186543LF	186544	186543LF
12	Seal Kit EPR/Carbon/Tungsten Carbide 1 $\frac{1}{4}$ " shaft sleeve	186861LF	186861LF	—	186861LF
12	Seal Kit EPR/Carbon/Tungsten Carbide 1 $\frac{5}{8}$ " shaft sleeve	185225LF	185225LF	—	185225LF
7	Shaft Sleeve Kit 1 $\frac{1}{4}$ " shaft sleeve	185024LF	185024LF	185025	185024LF
7	Shaft Sleeve Kit 1 $\frac{5}{8}$ " shaft sleeve	185021LF	185021LF	185022	185021LF
8	Water Slinger 1 $\frac{5}{8}$ " shaft sleeve	P53720	P53720	P53720	P53720
PARTS FOR STUFFING BOX CONSTRUCTION					
5	Motor Bracket – Motor Frames 143JP-145JP, 182JP-184JP	P85023	P85023	P85023	Not Offered
6	Motor Bracket Capscrew for above (4)	P52320	P52320	P52320	
5	Motor Bracket – Motor Frames 213JP-215JP, 254JP-256JP	P85025	P85025	P85025	
6	Motor Bracket Capscrew for above (4)	K03600	K03600	K03600	
5	Motor Bracket – Motor Frames 284JP-286JP, 324JP-326JP	P85099	P85099	P85099	
6	Motor Bracket Capscrew for above (4)	P19490	P19490	P19490	
	Packing	See Table C or D, Page 41			
	Single Seal Components	See Table A, Page 41			
	Double Seal Components	See Table B, Page 41			
	Shaft Sleeve	See Table A, B, C or D, Page 41			
29	Volute Coverplate 1 $\frac{1}{4}$ " shaft sleeve	P85031	P85031	P85031	
16	Volute Coverplate Capscrew for above (4)	P40020	P40020	P40020	
29	Volute Coverplate 1 $\frac{5}{8}$ " shaft sleeve	P85039	P85039	P85039	
16	Volute Coverplate Capscrew for above (8)	P52320	P52320	P52320	
1	Volute-250 PSI Operation for -S and -PF Seals only	Not Offered			
8	Water Slinger 1 $\frac{5}{8}$ " shaft sleeve	P77320	P77320	P77320	

NOTE: 1 $\frac{1}{4}$ " Shaft Sleeve - up to and including motor frame 215JM
 1 $\frac{5}{8}$ " Shaft Sleeve - motor frame 213JP and larger.

* Includes Wear Ring.

— Factory recommended spare parts.

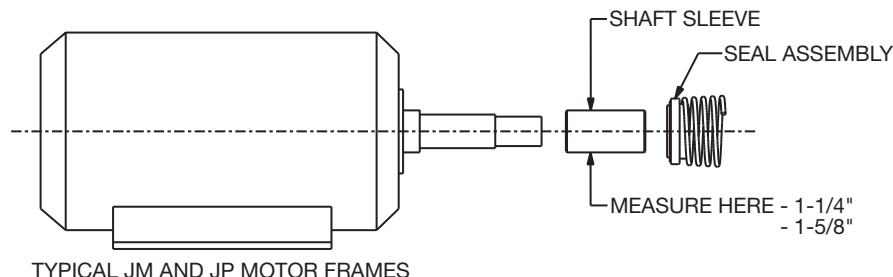
2 1/2 B

ITEM NO.	DESCRIPTION	PUMP CONSTRUCTION			
		BRONZE FITTED	BRONZE FITTED WITH WEAR RING	ALL IRON	ALL BRONZE
PARTS COMMON TO BOTH TYPES					
4	Impeller (state diameter) 9 1/2" full dia. 1 1/4" shaft sleeve	P78525	P78525	P78486	P78525
14	Impeller Capscrew 1 1/4" shaft sleeve	P52350	P52350	P52350	P52350
13	Impeller Lockwasher 1 1/4" shaft sleeve	J23874	J23874	J23874	J23874
3	Impeller Washer 1 1/4" shaft sleeve	P46390	P46390	P46381	P46390
9	Impeller Key 1 1/4" shaft sleeve	P49369	P49369	P49369	P49369
1	Volute	N/A†	N/A†	N/A†	N/A†
	Wear Ring	—	P49130	—	—
15	Volute Drain Plug (4)	P39040	P39040	P39050	P39480
11	Volute Capscrew (12)	P03470	P03470	P03470	S04180
2	Volute Gasket	P48690	P48690	P48690	P48690
8	Water Slinger 1 1/4" shaft sleeve	P53550	P53550	P53550	P53550
PARTS FOR STANDARD SEAL CONSTRUCTION					
5	Motor Bracket – Motor Frames 182JM-184JM	186533	186533	186533	P56969
6	Motor Bracket Capscrew for above (4)	P40020	P40020	P40020	P40020
5	Motor Bracket – Motor Frames 213JM-215JM	186530	186530	186530	P56949
6	Motor Bracket Capscrew for above (4)	K03600	K03600	K03600	K03600
12	Seal Kit Buna/Carbon/Ceramic 1 1/4" shaft sleeve	186862LF	186862LF	186860	186862LF
12	Seal Kit EPR/Carbon/Tungsten Carbide 1 1/4" shaft sleeve	186861LF	186861LF	—	186861LF
7	Shaft Sleeve Kit For all JM Sizes thru 215JM	185024LF	185024LF	185025	185024LF
PARTS FOR STUFFING BOX CONSTRUCTION					
5	Motor Bracket – Motor Frames 182JP-184JP	P85023	P85023	P85023	Not Offered
6	Motor Bracket Capscrew for above (4)	P52320	P52320	P52320	
	Packing	See Table C or D, Page 41			
	Single Seal Components	See Table A, Page 41			
	Double Seal Components	See Table B, Page 41			
	Shaft Sleeve 1 1/4" shaft sleeve	See Table A, B, C or D, Page 41			
29	Volute Coverplate 1 1/4" shaft sleeve	P85031	P85031	P85031	
16	Volute Coverplate Capscrew for above (4)	P40020	P40020	P40020	
1	Volute-250 PSI Operation for -S and -PF Seals only	Not Offered			

NOTE: 1 1/4" Shaft Sleeve - up to and including motor frame 215JM
N/A – NO LONGER AVAILABLE

†The impeller and/or volute are no longer available. This pump can be converted to the current style pump by ordering both the current style impeller and the current style volute.

— Factory recommended spare parts.



2 1/2 BB

ITEM NO.	DESCRIPTION	PUMP CONSTRUCTION			
		BRONZE FITTED	BRONZE FITTED WITH WEAR RING	ALL IRON	ALL BRONZE
PARTS COMMON TO BOTH TYPES					
4	Impeller (state diameter) 9 1/2" full dia. 1 1/4" shaft sleeve	P50732	P50732	P50744	P50732
4	Impeller (state diameter) 9 1/2" full dia. 1 5/8" shaft sleeve	P50739	P50739	P50746	P50739
14	Impeller Capscrew 1 1/4" shaft sleeve	P52350	P52350	P52350	P52350
14	Impeller Capscrew 1 5/8" shaft sleeve	P13800	P13800	P13800	P13800
13	Impeller Lockwasher 1 1/4" shaft sleeve	J23874	J23874	J23874	J23874
13	Impeller Lockwasher 1 5/8" shaft sleeve	J23875	J23875	J23875	J23875
3	Impeller Washer 1 1/4" shaft sleeve	P46390	P46390	P46381	P46390
3	Impeller Washer 1 5/8" shaft sleeve	P51250	P51250	P46382	P51250
9	Impeller Key 1 1/4" shaft sleeve	P49369	P49369	P49369	P49369
9	Impeller Key 1 5/8" shaft sleeve	P49372	P49372	P49372	P49372
1	Volute	P42546	*P44156	P42546	P42548
	Wear Ring	—	P49870	—	—
15	Volute Drain Plug (4)	P39040	P39040	P39050	P39480
11	Volute Capscrew (12) for Frame Sizes thru 256JP	P03470	P03470	P03470	S04180
11	Volute Capscrew (12) for Frame Sizes 284JP and Larger	P54700	P54700	P54700	P54710
2	Volute Gasket	P48690	P48690	P48690	P48690
8	Water Slinger 1 1/4" shaft sleeve	P53550	P53550	P53550	P53550
PARTS FOR STANDARD SEAL CONSTRUCTION					
5	Motor Bracket – Motor Frames 182JM-184JM	186533	186533	186533	P56969
6	Motor Bracket Capscrew for above (4)	P40020	P40020	P40020	P40020
5	Motor Bracket – Motor Frames 213JM-215JM	186530	186530	186530	P56949
6	Motor Bracket Capscrew for above (4)	K03600	K03600	K03600	K03600
5	Motor Bracket – Motor Frames 254JP-256JP	P77166	P77166	P77166	P77169
6	Motor Bracket Capscrew for above (4)	P13780	P13780	P13780	P13780
5	Motor Bracket – Motor Frames 284JP-286JP, 324JP-326JP	P53500	P53500	P53500	P53540
6	Motor Bracket Capscrew for above (4)	P19490	P19490	P19490	P19490
12	Seal Kit Buna/Carbon/Ceramic 1 1/4" shaft sleeve	186862LF	186862LF	186860	186862LF
12	Seal Kit Buna/Carbon/Ceramic 1 5/8" shaft sleeve	186543LF	186543LF	186544	186543LF
12	Seal Kit EPR/Carbon/Tungsten Carbide 1 1/4" shaft sleeve	186861LF	186861LF	—	186861LF
12	Seal Kit EPR/Carbon/Tungsten Carbide 1 5/8" shaft sleeve	185225LF	185225LF	—	185225LF
7	Shaft Sleeve Kit 1 1/4" shaft sleeve	185024LF	185024LF	185025	185024LF
7	Shaft Sleeve Kit 1 5/8" shaft sleeve	185021LF	185021LF	185022	185021LF
8	Water Slinger 1 5/8" shaft sleeve	P53720	P53720	P53720	P53720
PARTS FOR STUFFING BOX CONSTRUCTION					
5	Motor Bracket – Motor Frames 182JP-184JP	P85023	P85023	P85023	Not Offered
6	Motor Bracket Capscrew for above (4)	P52320	P52320	P52320	
5	Motor Bracket – Motor Frames 213JP-215JP, 254JP-256JP	P85025	P85025	P85025	
6	Motor Bracket Capscrew for above (4)	K03600	K03600	K03600	
5	Motor Bracket – Motor Frames 284JP-286JP, 324JP-326JP	P85099	P85099	P85099	
6	Motor Bracket Capscrew for above (4)	P19490	P19490	P19490	
	Packing	See Table C or D, Page 41			
	Single Seal Components	See Table A, Page 41			
	Double Seal Components	See Table B, Page 41			
	Shaft Sleeve	See Table A, B, C or D, Page 41			
29	Volute Coverplate 1 1/4" shaft sleeve	P85031	P85031	P85031	
16	Volute Coverplate Capscrew for above (4)	P40020	P40020	P40020	
29	Volute Coverplate 1 5/8" shaft sleeve	P85039	P85039	P85039	
16	Volute Coverplate Capscrew for above (8)	P52320	P52320	P52320	
1	Volute-250 PSI Operation for -S and -PF Seals only	Not Offered			
8	Water Slinger 1 5/8" shaft sleeve	P77320	P77320	P77320	

NOTE: 1 1/4" Shaft Sleeve - up to and including motor frame 215JM
 1 5/8" Shaft Sleeve - motor frame 213JP and larger.

* Includes Wear Ring.

— Factory recommended spare parts.

3BB

ITEM NO.	DESCRIPTION	PUMP CONSTRUCTION			
		BRONZE FITTED	BRONZE FITTED WITH WEAR RING	ALL IRON	ALL BRONZE
PARTS COMMON TO BOTH TYPES					
4	Impeller (state diameter) 9 $\frac{1}{2}$ " full dia. 1 $\frac{1}{4}$ " shaft sleeve	P49620	P49620	P49600	P49620
4	Impeller (state diameter) 9 $\frac{1}{2}$ " full dia. 1 $\frac{5}{8}$ " shaft sleeve	P49640	P49640	P49660	P49640
14	Impeller Capscrew 1 $\frac{1}{4}$ " shaft sleeve	P52350	P52350	P52350	P52350
14	Impeller Capscrew 1 $\frac{5}{8}$ " shaft sleeve	P13800	P13800	P13800	P13800
13	Impeller Lockwasher 1 $\frac{1}{4}$ " shaft sleeve	J23874	J23874	J23874	J23874
13	Impeller Lockwasher 1 $\frac{5}{8}$ " shaft sleeve	J23875	J23875	J23875	J23875
3	Impeller Washer 1 $\frac{1}{4}$ " shaft sleeve	P46390	P46390	P46381	P46390
3	Impeller Washer 1 $\frac{5}{8}$ " shaft sleeve	P51250	P51250	P46382	P51250
9	Impeller Key 1 $\frac{1}{4}$ " shaft sleeve	P49369	P49369	P49369	P49369
9	Impeller Key 1 $\frac{5}{8}$ " shaft sleeve	P49372	P49372	P49372	P49372
1	Volute	P42820	*P44161	P42820	N/A†
	Wear Ring	—	P50590	—	—
15	Volute Drain Plug (4)	P39040	P39040	P39050	P39480
11	Volute Capscrew (12) for Frame Sizes thru 256JP	P03470	P03470	P03470	S04180
11	Volute Capscrew (12) for Frame Sizes 284JP and Larger	P54700	P54700	P54700	P54710
2	Volute Gasket	P48690	P48690	P48690	P48690
8	Water Slinger 1 $\frac{1}{4}$ " shaft sleeve	P53550	P53550	P53550	P53550
PARTS FOR STANDARD SEAL CONSTRUCTION					
5	Motor Bracket – Motor Frames 182JM-184JM	186533	186533	186533	P56969
6	Motor Bracket Capscrew for above (4)	P40020	P40020	P40020	P40020
5	Motor Bracket – Motor Frames 213JM-215JM	186530	186530	186530	P56949
6	Motor Bracket Capscrew for above (4)	K03600	K03600	K03600	K03600
5	Motor Bracket – Motor Frames 254JP-256JP	P77166	P77166	P77166	P77169
6	Motor Bracket Capscrew for above (4)	P13780	P13780	P13780	P13780
5	Motor Bracket – Motor Frames 284JP-286JP, 324JP-326JP	P53500	P53500	P53500	P53540
6	Motor Bracket Capscrew for above (4)	P19490	P19490	P19490	P19490
12	Seal Kit Buna/Carbon/Ceramic 1 $\frac{1}{4}$ " shaft sleeve	186862LF	186862LF	186860	186862LF
12	Seal Kit Buna/Carbon/Ceramic 1 $\frac{5}{8}$ " shaft sleeve	186543LF	186543LF	186544	186543LF
12	Seal Kit EPR/Carbon/Tungsten Carbide 1 $\frac{1}{4}$ " shaft sleeve	186861LF	186861LF	—	186861LF
12	Seal Kit EPR/Carbon/Tungsten Carbide 1 $\frac{5}{8}$ " shaft sleeve	185225LF	185225LF	—	185225LF
7	Shaft Sleeve Kit 1 $\frac{1}{4}$ " shaft sleeve	185024LF	185024LF	185025	185024LF
7	Shaft Sleeve Kit 1 $\frac{5}{8}$ " shaft sleeve	185021LF	185021LF	185022	185021LF
8	Water Slinger 1 $\frac{5}{8}$ " shaft sleeve	P53720	P53720	P53720	P53720
PARTS FOR STUFFING BOX CONSTRUCTION					
5	Motor Bracket – Motor Frames 182JP-184JP	P85023	P85023	P85023	Not Offered
6	Motor Bracket Capscrew for above (4)	P52320	P52320	P52320	
5	Motor Bracket – Motor Frames 213JP-215JP, 254JP-256JP	P85025	P85025	P85025	
6	Motor Bracket Capscrew for above (4)	K03600	K03600	K03600	
5	Motor Bracket – Motor Frames 284JP-286JP, 324JP-326JP	P85099	P85099	P85099	
6	Motor Bracket Capscrew for above (4)	P19490	P19490	P19490	
	Packing	See Table C or D, Page 41			
	Single Seal Components	See Table A, Page 41			
	Double Seal Components	See Table B, Page 41			
	Shaft Sleeve	See Table A, B, C or D, Page 41			
29	Volute Coverplate 1 $\frac{1}{4}$ " shaft sleeve	P85031	P85031	P85031	
16	Volute Coverplate Capscrew for above (4)	P40020	P40020	P40020	
29	Volute Coverplate 1 $\frac{5}{8}$ " shaft sleeve	P85039	P85039	P85039	
16	Volute Coverplate Capscrew for above (8)	P52320	P52320	P52320	
1	Volute-250 PSI Operation for -S and -PF Seals only	Not Offered			
8	Water Slinger 1 $\frac{5}{8}$ " shaft sleeve	P77320	P77320	P77320	

NOTE: 1 $\frac{1}{4}$ " Shaft Sleeve - up to and including motor frame 215JM
1 $\frac{5}{8}$ " Shaft Sleeve - motor frame 213JP and larger.

N/A – NO LONGER AVAILABLE

* Includes Wear Ring.

†The impeller and/or volute are no longer available. This pump can be converted to the current style pump by ordering both the current style impeller and the current style volute.

— – Factory recommended spare parts.

3BC

ITEM NO.	DESCRIPTION	PUMP CONSTRUCTION			
		BRONZE FITTED	BRONZE FITTED WITH WEAR RING	ALL IRON	ALL BRONZE
PARTS COMMON TO BOTH TYPES					
4	Impeller (state diameter) 9 $\frac{1}{2}$ " full dia. 1 $\frac{1}{4}$ " shaft sleeve	P71542	P71542	P71548	
4	Impeller (state diameter) 9 $\frac{1}{2}$ " full dia. 1 $\frac{5}{8}$ " shaft sleeve	P71545	P71545	P71551	
14	Impeller Capscrew 1 $\frac{1}{4}$ " shaft sleeve	P52350	P52350	P52350	
14	Impeller Capscrew 1 $\frac{5}{8}$ " shaft sleeve	P13800	P13800	P13800	
13	Impeller Lockwasher 1 $\frac{1}{4}$ " shaft sleeve	J23874	J23874	J23874	
13	Impeller Lockwasher 1 $\frac{5}{8}$ " shaft sleeve	J23875	J23875	J23875	
3	Impeller Washer 1 $\frac{1}{4}$ " shaft sleeve	P46390	P46390	P46381	
3	Impeller Washer 1 $\frac{5}{8}$ " shaft sleeve	P51250	P51250	P46382	
9	Impeller Key 1 $\frac{1}{4}$ " shaft sleeve	P49369	P49369	P49369	
9	Impeller Key 1 $\frac{5}{8}$ " shaft sleeve	P49372	P49372	P49372	
1	Volute	P71539	*P71540	P71539	
	Wear Ring	—	P50650	—	
15	Volute Drain Plug (4)	P39040	P39040	P39050	
11	Volute Capscrew (12) for Frame Sizes thru 256JP	P03470	P03470	P03470	
11	Volute Capscrew (12) for Frame Sizes 284JP and Larger	P54700	P54700	P54700	
2	Volute Gasket	P48690	P48690	P48690	
8	Water Slinger 1 $\frac{1}{4}$ " shaft sleeve	P53550	P53550	P53550	
PARTS FOR STANDARD SEAL CONSTRUCTION					
5	Motor Bracket – Motor Frames 182JM-184JM	186533	186533	186533	
6	Motor Bracket Capscrew for above (4)	P40020	P40020	P40020	
5	Motor Bracket – Motor Frames 213JM-215JM	186530	186530	186530	
6	Motor Bracket Capscrew for above (4)	K03600	K03600	K03600	
5	Motor Bracket – Motor Frames 254JP-256JP	P77166	P77166	P77166	
6	Motor Bracket Capscrew for above (4)	P13780	P13780	P13780	Not Offered
5	Motor Bracket – Motor Frames 284JP-286JP, 324JP-326JP	P53500	P53500	P53500	
6	Motor Bracket Capscrew for above (4)	P19490	P19490	P19490	
12	Seal Kit Buna/Carbon/Ceramic 1 $\frac{1}{4}$ " shaft sleeve	186862LF	186862LF	186860	
12	Seal Kit Buna/Carbon/Ceramic 1 $\frac{5}{8}$ " shaft sleeve	186543LF	186543LF	186544	
12	Seal Kit EPR/Carbon/Tungsten Carbide 1 $\frac{1}{4}$ " shaft sleeve	186861LF	186861LF	—	
12	Seal Kit EPR/Carbon/Tungsten Carbide 1 $\frac{5}{8}$ " shaft sleeve	185225LF	185225LF	—	
7	Shaft Sleeve Kit 1 $\frac{1}{4}$ " shaft sleeve	185024LF	185024LF	185025	
7	Shaft Sleeve Kit 1 $\frac{5}{8}$ " shaft sleeve	185021LF	185021LF	185022	
8	Water Slinger 1 $\frac{5}{8}$ " shaft sleeve	P53720	P53720	P53720	
PARTS FOR STUFFING BOX CONSTRUCTION					
5	Motor Bracket – Motor Frames 182JP-184JP	P85023	P85023	P85023	
6	Motor Bracket Capscrew for above (4)	P52320	P52320	P52320	
5	Motor Bracket – Motor Frames 213JP-215JP, 254JP-256JP	P85025	P85025	P85025	
6	Motor Bracket Capscrew for above (4)	K03600	K03600	K03600	
5	Motor Bracket – Motor Frames 284JP-286JP, 324JP-326JP	P85099	P85099	P85099	
6	Motor Bracket Capscrew for above (4)	P19490	P19490	P19490	
	Packing	See Table C or D, Page 41			
	Single Seal Components	See Table A, Page 41			
	Double Seal Components	See Table B, Page 41			
	Shaft Sleeve	See Table A, B, C or D, Page 41			
29	Volute Coverplate 1 $\frac{1}{4}$ " shaft sleeve	P85031	P85031	P85031	
16	Volute Coverplate Capscrew for above (4)	P40020	P40020	P40020	
29	Volute Coverplate 1 $\frac{5}{8}$ " shaft sleeve	P85039	P85039	P85039	
16	Volute Coverplate Capscrew for above (8)	P52320	P52320	P52320	
1	Volute-250 PSI Operation for -S and -PF Seals only	Not Offered			
8	Water Slinger 1 $\frac{5}{8}$ " shaft sleeve	P77320	P77320	P77320	

NOTE: 1 $\frac{1}{4}$ " Shaft Sleeve - up to and including motor frame 215JM
 1 $\frac{5}{8}$ " Shaft Sleeve - motor frame 213JP and larger.

* Includes Wear Ring.

— Factory recommended spare parts.

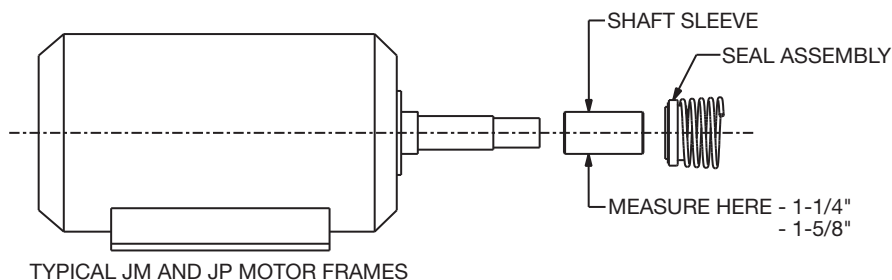
6BB

ITEM NO.	DESCRIPTION	PUMP CONSTRUCTION			
		BRONZE FITTED	BRONZE FITTED WITH WEAR RING	ALL IRON	ALL BRONZE
PARTS COMMON TO BOTH TYPES					
4	Impeller (state diameter) 9 1/2" full dia. 1 5/8" shaft sleeve	N/A†	N/A†	N/A†	N/A†
14	Impeller Capscrew 1 5/8" shaft sleeve	P13800	P13800	P13800	P13800
13	Impeller Lockwasher 1 5/8" shaft sleeve	J23875	J23875	J23875	J23875
3	Impeller Washer 1 5/8" shaft sleeve	P51250	P51250	P46382	P51250
9	Impeller Key 1 5/8" shaft sleeve	P49372	P49372	P49372	P49372
1	Volute	N/A†	N/A†	N/A†	N/A†
	Wear Ring	—	P51390	—	—
15	Volute Drain Plug (4)	P39040	P39040	P39050	P39480
11	Volute Capscrew (12) for Frame Sizes thru 256JP	P03470	P03470	P03470	S04180
11	Volute Capscrew (12) for Frame Sizes 284JP and Larger	P54700	P54700	P54700	P54710
2	Volute Gasket	P48690	P48690	P48690	P48690
PARTS FOR STANDARD SEAL CONSTRUCTION					
5	Motor Bracket – Motor Frames 254JM-256JM	P77166	P77166	P77166	P77169
6	Motor Bracket Capscrew for above (4)	P13780	P13780	P13780	P13780
5	Motor Bracket – Motor Frames 284JP-286JP	P53500	P53500	P53500	P53540
6	Motor Bracket Capscrew for above (4)	P19490	P19490	P19490	P19490
12	Seal Kit Buna/Carbon/Ceramic 1 5/8" shaft sleeve	186543LF	186543LF	186544	186543LF
12	Seal Kit EPR/Carbon/Tungsten Carbide 1 5/8" shaft sleeve	185225LF	185225LF	—	185225LF
7	Shaft Sleeve Kit 1 5/8" shaft sleeve	185021LF	185021LF	185022	185021LF
8	Water Slinger 1 5/8" shaft sleeve	P53720	P53720	P53720	P53720
PARTS FOR STUFFING BOX CONSTRUCTION					
5	Motor Bracket – Motor Frames 254JP-256JP	P85025	P85025	P85025	Not Offered
6	Motor Bracket Capscrew for above (4)	K03600	K03600	K03600	
5	Motor Bracket – Motor Frames 284JP-286JP	P85099	P85099	P85099	
6	Motor Bracket Capscrew for above (4)	P19490	P19490	P19490	
	Packing	See Table C or D, Page 41			
	Single Seal Components	See Table A, Page 41			
	Double Seal Components	See Table B, Page 41			
	Shaft Sleeve	See Table A, B, C or D, Page 41			
29	Volute Coverplate 1 5/8" shaft sleeve	P85039	P85039	P85039	
16	Volute Coverplate Capscrew for above (8)	P52320	P52320	P52320	
1	Volute-250 PSI Operation for -S and -PF Seals only	Not Offered			
8	Water Slinger 1 5/8" shaft sleeve	P77320	P77320	P77320	

N/A – NO LONGER AVAILABLE

†The impeller and/or volute are no longer available. This pump can be converted to the current style pump by ordering both the current style impeller and the current style volute.

— Factory recommended spare parts.



4BB

ITEM NO.	DESCRIPTION	PUMP CONSTRUCTION			
		BRONZE FITTED	BRONZE FITTED WITH WEAR RING	ALL IRON	ALL BRONZE
PARTS COMMON TO BOTH TYPES					
4	Impeller (state diameter) 9½" full dia. 1¼" shaft sleeve	P50550	P50550	P50390	P50550
4	Impeller (state diameter) 9½" full dia. 1⅝" shaft sleeve	P50570	P50570	P50330	P50570
14	Impeller Capscrew 1¼" shaft sleeve	P52350	P52350	P52350	P52350
14	Impeller Capscrew 1⅝" shaft sleeve	P13800	P13800	P13800	P13800
13	Impeller Lockwasher 1¼" shaft sleeve	J23874	J23874	J23874	J23874
13	Impeller Lockwasher 1⅝" shaft sleeve	J23875	J23875	J23875	J23875
3	Impeller Washer 1¼" shaft sleeve	P46390	P46390	P46381	P46390
3	Impeller Washer 1⅝" shaft sleeve	P51250	P51250	P46382	P51250
9	Impeller Key 1¼" shaft sleeve	P49369	P49369	P49369	P49369
9	Impeller Key 1⅝" shaft sleeve	P49372	P49372	P49372	P49372
1	Volute	N/A†	N/A†	N/A†	N/A†
	Wear Ring	—	N/A	—	—
15	Volute Drain Plug (4)	P39040	P39040	P39050	P39480
11	Volute Capscrew (12)	P03470	P03470	P03470	S04180
2	Volute Gasket	P48690	P48690	P48690	P48690
8	Water Slinger 1¼" shaft sleeve	P53550	P53550	P53550	P53550
PARTS FOR STANDARD SEAL CONSTRUCTION					
5	Motor Bracket – Motor Frames 182JM-184JM	186533	186533	186533	P56969
6	Motor Bracket Capscrew for above (4)	P40020	P40020	P40020	P40020
5	Motor Bracket – Motor Frames 213JM-215JM	186530	186530	186530	P56949
6	Motor Bracket Capscrew for above (4)	K03600	K03600	K03600	K03600
5	Motor Bracket – Motor Frames 254JP-256JP	P77166	P77166	P77166	P77169
6	Motor Bracket Capscrew for above (4)	P13780	P13780	P13780	P13780
12	Seal Kit Buna/Carbon/Ceramic 1¼" shaft sleeve	186862LF	186862LF	186860	186862LF
12	Seal Kit Buna/Carbon/Ceramic 1⅝" shaft sleeve	186543LF	186543LF	186544	186543LF
12	Seal Kit EPR/Carbon/Tungsten Carbide 1¼" shaft sleeve	186861LF	186861LF	—	186861LF
12	Seal Kit EPR/Carbon/Tungsten Carbide 1⅝" shaft sleeve	185225LF	185225LF	—	185225LF
7	Shaft Sleeve Kit 1¼" shaft sleeve	185024LF	185024LF	185025	185024LF
7	Shaft Sleeve Kit 1⅝" shaft sleeve	185021LF	185021LF	185022	185021LF
8	Water Slinger 1⅝" shaft sleeve	P53720	P53720	P53720	P53720
PARTS FOR STUFFING BOX CONSTRUCTION					
5	Motor Bracket – Motor Frames 182JP-184JP	P85023	P85023	P85023	Not Offered
6	Motor Bracket Capscrew for above (4)	P52320	P52320	P52320	
5	Motor Bracket – Motor Frames 213JP-215JP, 254JP-256JP	P85025	P85025	P85025	
6	Motor Bracket Capscrew for above (4)	K03600	K03600	K03600	
	Packing	See Table C or D, Page 41			
	Single Seal Components	See Table A, Page 41			
	Double Seal Components	See Table B, Page 41			
	Shaft Sleeve	See Table A, B, C or D, Page 41			
29	Volute Coverplate 1¼" shaft sleeve	P85031	P85031	P85031	
16	Volute Coverplate Capscrew for above (4)	P40020	P40020	P40020	
29	Volute Coverplate 1⅝" shaft sleeve	P85039	P85039	P85039	
16	Volute Coverplate Capscrew for above (8)	P52320	P52320	P52320	
1	Volute-250 PSI Operation for -S and -PF Seals only	Not Offered			
8	Water Slinger 1⅝" shaft sleeve	P77320	P77320	P77320	

NOTE: 1¼" Shaft Sleeve - up to and including motor frame 215JM
1⅝" Shaft Sleeve - motor frame 213JP and larger.

N/A – NO LONGER AVAILABLE

†The impeller and/or volute are no longer available. This pump can be converted to the current style pump by ordering both the current style impeller and the current style volute.

— Factory recommended spare parts.

4BC

ITEM NO.	DESCRIPTION	PUMP CONSTRUCTION			
		BRONZE FITTED	BRONZE FITTED WITH WEAR RING	ALL IRON	ALL BRONZE
PARTS COMMON TO BOTH TYPES					
4	Impeller (state diameter) 9 $\frac{1}{2}$ " full dia. 1 $\frac{1}{4}$ " shaft sleeve	P50748	P50748	P50757	Not Offered
4	Impeller (state diameter) 9 $\frac{1}{2}$ " full dia. 1 $\frac{5}{8}$ " shaft sleeve	P50755	P50755	P50759	
14	Impeller Capscrew 1 $\frac{1}{4}$ " shaft sleeve	P52350	P52350	P52350	
14	Impeller Capscrew 1 $\frac{5}{8}$ " shaft sleeve	P13800	P13800	P13800	
13	Impeller Lockwasher 1 $\frac{1}{4}$ " shaft sleeve	J23874	J23874	J23874	
13	Impeller Lockwasher 1 $\frac{5}{8}$ " shaft sleeve	J23875	J23875	J23875	
3	Impeller Washer 1 $\frac{1}{4}$ " shaft sleeve	P46390	P46390	P46381	
3	Impeller Washer 1 $\frac{5}{8}$ " shaft sleeve	P51250	P51250	P46382	
9	Impeller Key 1 $\frac{1}{4}$ " shaft sleeve	P49369	P49369	P49369	
9	Impeller Key 1 $\frac{5}{8}$ " shaft sleeve	P49372	P49372	P49372	
1	Volute	P43366	*P44157	P43366	
	Wear Ring	—	P49142	—	
15	Volute Drain Plug (4)	P39040	P39040	P39050	
11	Volute Capscrew (12)	P03470	P03470	P03470	
2	Volute Gasket	P48690	P48690	P48690	
8	Water Slinger 1 $\frac{1}{4}$ " shaft sleeve	P53550	P53550	P53550	
PARTS FOR STANDARD SEAL CONSTRUCTION					
5	Motor Bracket – Motor Frames 213JM-215JM	186530	186530	186530	Not Offered
6	Motor Bracket Capscrew for above (4)	K03600	K03600	K03600	
5	Motor Bracket – Motor Frames 254JP-256JP	P77166	P77166	P77166	
6	Motor Bracket Capscrew for above (4)	P13780	P13780	P13780	
12	Seal Kit Buna/Carbon/Ceramic 1 $\frac{1}{4}$ " shaft sleeve	186862LF	186862LF	186860	
12	Seal Kit Buna/Carbon/Ceramic 1 $\frac{5}{8}$ " shaft sleeve	186543LF	186543LF	186544	
12	Seal Kit EPR/Carbon/Tungsten Carbide 1 $\frac{1}{4}$ " shaft sleeve	186861LF	186861LF	—	
12	Seal Kit EPR/Carbon/Tungsten Carbide 1 $\frac{5}{8}$ " shaft sleeve	185225LF	185225LF	—	
7	Shaft Sleeve Kit 1 $\frac{1}{4}$ " shaft sleeve	185024LF	185024LF	185025	
7	Shaft Sleeve Kit 1 $\frac{5}{8}$ " shaft sleeve	185021LF	185021LF	185022	
8	Water Slinger 1 $\frac{5}{8}$ " shaft sleeve	P53720	P53720	P53720	
PARTS FOR STUFFING BOX CONSTRUCTION					
5	Motor Bracket – Motor Frames 213JP-215JP, 254JP-256JP	P85025	P85025	P85025	Not Offered
6	Motor Bracket Capscrew for above (4)	K03600	K03600	K03600	
	Packing	See Table C or D, Page 41			
	Single Seal Components	See Table A, Page 41			
	Double Seal Components	See Table B, Page 41			
	Shaft Sleeve	See Table A, B, C or D, Page 41			
29	Volute Coverplate 1 $\frac{5}{8}$ " shaft sleeve	P85039	P85039	P85039	
16	Volute Coverplate Capscrew for above (8)	P52320	P52320	P52320	
1	Volute-250 PSI Operation for -S and -PF Seals only	Not Offered			
8	Water Slinger 1 $\frac{5}{8}$ " shaft sleeve	P77320	P77320	P77320	

NOTE: 1 $\frac{1}{4}$ " Shaft Sleeve - up to and including motor frame 215JM
 1 $\frac{5}{8}$ " Shaft Sleeve - motor frame 213JP and larger.

* Includes Wear Ring.

— Factory recommended spare parts.

5BB

ITEM NO.	DESCRIPTION	PUMP CONSTRUCTION			
		BRONZE FITTED	BRONZE FITTED WITH WEAR RING	ALL IRON	ALL BRONZE
PARTS COMMON TO BOTH TYPES					
4	Impeller (state diameter) 9½" full dia. 1¼" shaft sleeve	P50930	P50930	N/A†	P50930
4	Impeller (state diameter) 9½" full dia. 1⅝" shaft sleeve	P50970	P50970	N/A†	P50970
14	Impeller Capscrew 1¼" shaft sleeve	P52350	P52350	P52350	P52350
14	Impeller Capscrew 1⅝" shaft sleeve	P13800	P13800	P13800	P13800
13	Impeller Lockwasher 1¼" shaft sleeve	J23874	J23874	J23874	J23874
13	Impeller Lockwasher 1⅝" shaft sleeve	J23875	J23875	J23875	J23875
3	Impeller Washer 1¼" shaft sleeve	P46390	P46390	P46381	P46390
3	Impeller Washer 1⅝" shaft sleeve	P51250	P51250	P46382	P51250
9	Impeller Key 1¼" shaft sleeve	P49369	P49369	P49369	P49369
9	Impeller Key 1⅝" shaft sleeve	P49372	P49372	P49372	P49372
1	Volute	N/A†	N/A†	N/A†	N/A†
	Wear Ring	—	P50990	—	—
15	Volute Drain Plug (4)	P39040	P39040	P39050	P39480
11	Volute Capscrew (12) for Frame Sizes thru 256JP	P03470	P03470	P03470	S04180
11	Volute Capscrew (12) for Frame Sizes 284JP and larger	P54700	P54700	P54700	P54710
2	Volute Gasket	P48690	P48690	P48690	P48690
8	Water Slinger 1¼" shaft sleeve	P53550	P53550	P53550	P53550
PARTS FOR STANDARD SEAL CONSTRUCTION					
5	Motor Bracket – Motor Frames 213JM-215JM	186530	186530	186530	P56949
6	Motor Bracket Capscrew for above (4)	K03600	K03600	K03600	K03600
5	Motor Bracket – Motor Frames 254JP-256JP	P77166	P77166	P77166	P77169
6	Motor Bracket Capscrew for above (4)	P13780	P13780	P13780	P13780
12	Seal Kit Buna/Carbon/Ceramic 1¼" shaft sleeve	186862LF	186862LF	186860	186862LF
12	Seal Kit Buna/Carbon/Ceramic 1⅝" shaft sleeve	186543LF	186543LF	186544	186543LF
12	Seal Kit EPR/Carbon/Tungsten Carbide 1¼" shaft sleeve	186861LF	186861LF	—	186861LF
12	Seal Kit EPR/Carbon/Tungsten Carbide 1⅝" shaft sleeve	185225LF	185225LF	—	185225LF
7	Shaft Sleeve Kit 1¼" shaft sleeve	185024LF	185024LF	185025	185024LF
7	Shaft Sleeve Kit 1⅝" shaft sleeve	185021LF	185021LF	185022	185021LF
8	Water Slinger 1⅝" shaft sleeve	P53720	P53720	P53720	P53720
PARTS FOR STUFFING BOX CONSTRUCTION					
5	Motor Bracket – Motor Frames 213JP-215JP, 254JP-256JP	P85025	P85025	P85025	Not Offered
6	Motor Bracket Capscrew for above (4)	K03600	K03600	K03600	
	Packing	See Table C or D, Page 41			
	Single Seal Components	See Table A, Page 41			
	Double Seal Components	See Table B, Page 41			
	Shaft Sleeve	See Table A, B, C or D, Page 41			
29	Volute Coverplate 1⅝" shaft sleeve	P85039	P85039	P85039	
16	Volute Coverplate Capscrew for above (8)	P52320	P52320	P52320	
1	Volute-250 PSI Operation for -S and -PF Seals only	Not Offered			
8	Water Slinger 1⅝" shaft sleeve	P77320	P77320	P77320	

NOTE: 1¼" Shaft Sleeve - up to and including motor frame 215JM
1⅝" Shaft Sleeve - motor frame 213JP and larger.

N/A – NO LONGER AVAILABLE

†The impeller and/or volute are no longer available. This pump can be converted to the current style pump by ordering both the current style impeller and the current style volute.

— Factory recommended spare parts.

5BC

ITEM NO.	DESCRIPTION	PUMP CONSTRUCTION			
		BRONZE FITTED	BRONZE FITTED WITH WEAR RING	ALL IRON	ALL BRONZE
PARTS COMMON TO BOTH TYPES					
4	Impeller (state diameter) 9 $\frac{1}{2}$ " full dia. 1 $\frac{1}{4}$ " shaft sleeve	P50822	P50822	P50824	Not Offered
4	Impeller (state diameter) 9 $\frac{1}{2}$ " full dia. 1 $\frac{5}{8}$ " shaft sleeve	P50832	P50832	P50834	
14	Impeller Capscrew 1 $\frac{1}{4}$ " shaft sleeve	P52350	P52350	P52350	
14	Impeller Capscrew 1 $\frac{5}{8}$ " shaft sleeve	P13800	P13800	P13800	
13	Impeller Lockwasher 1 $\frac{1}{4}$ " shaft sleeve	J23874	J23874	J23874	
13	Impeller Lockwasher 1 $\frac{5}{8}$ " shaft sleeve	J23875	J23875	J23875	
3	Impeller Washer 1 $\frac{1}{4}$ " shaft sleeve	P46390	P46390	P46381	
3	Impeller Washer 1 $\frac{5}{8}$ " shaft sleeve	P51250	P51250	P46382	
9	Impeller Key 1 $\frac{1}{4}$ " shaft sleeve	P49369	P49369	P49369	
9	Impeller Key 1 $\frac{5}{8}$ " shaft sleeve	P49372	P49372	P49372	
1	Volute	P43685	*P43873	P43685	
	Wear Ring	—	P49143	—	
15	Volute Drain Plug (4)	P39040	P39040	P39050	
11	Volute Capscrew (12) for Frame Sizes thru 256JP	P03470	P03470	P03470	
11	Volute Capscrew (12) for Frame Sizes 284JP and larger	P54700	P54700	P54700	
2	Volute Gasket	P48690	P48690	P48690	
8	Water Slinger 1 $\frac{1}{4}$ " shaft sleeve	P53550	P53550	P53550	
PARTS FOR STANDARD SEAL CONSTRUCTION					
5	Motor Bracket – Motor Frames 213JM-215JM	186530	186530	186530	Not Offered
6	Motor Bracket Capscrew for above (4)	K03600	K03600	K03600	
5	Motor Bracket – Motor Frames 254JP-256JP	P77166	P77166	P77166	
6	Motor Bracket Capscrew for above (4)	P13780	P13780	P13780	
5	Motor Bracket – Motor Frames 284JP-286JP	P53500	P53500	P53500	
6	Motor Bracket Capscrew for above (4)	P19490	P19490	P19490	
12	Seal Kit Buna/Carbon/Ceramic 1 $\frac{1}{4}$ " shaft sleeve	186862LF	186862LF	186860	
12	Seal Kit Buna/Carbon/Ceramic 1 $\frac{5}{8}$ " shaft sleeve	186543LF	186543LF	186544	
12	Seal Kit EPR/Carbon/Tungsten Carbide 1 $\frac{1}{4}$ " shaft sleeve	186861LF	186861LF	—	
12	Seal Kit EPR/Carbon/Tungsten Carbide 1 $\frac{5}{8}$ " shaft sleeve	185225LF	185225LF	—	
7	Shaft Sleeve Kit 1 $\frac{1}{4}$ " shaft sleeve	185024LF	185024LF	185025	
7	Shaft Sleeve Kit 1 $\frac{5}{8}$ " shaft sleeve	185021LF	185021LF	185022	
8	Water Slinger 1 $\frac{5}{8}$ " shaft sleeve	P53720	P53720	P53720	
PARTS FOR STUFFING BOX CONSTRUCTION					
5	Motor Bracket – Motor Frames 213JP-215JP, 254JP-256JP	P85025	P85025	P85025	Not Offered
6	Motor Bracket Capscrew for above (4)	K03600	K03600	K03600	
5	Motor Bracket – Motor Frames 284JP-286JP	P85099	P85099	P85099	
6	Motor Bracket Capscrew for above (4)	P19490	P19490	P19490	
	Packing	See Table C or D, Page 41			
	Single Seal Components	See Table A, Page 41			
	Double Seal Components	See Table B, Page 41			
	Shaft Sleeve	See Table A, B, C or D, Page 41			
29	Volute Coverplate 1 $\frac{5}{8}$ " shaft sleeve	P85039	P85039	P85039	
16	Volute Coverplate Capscrew for above (8)	P52320	P52320	P52320	
1	Volute-250 PSI Operation for -S and -PF Seals only	P43686	*P43877	P43686	
8	Water Slinger 1 $\frac{5}{8}$ " shaft sleeve	P77320	P77320	P77320	

NOTE: 1 $\frac{1}{4}$ " Shaft Sleeve - up to and including motor frame 215JM
 1 $\frac{5}{8}$ " Shaft Sleeve - motor frame 213JP and larger.


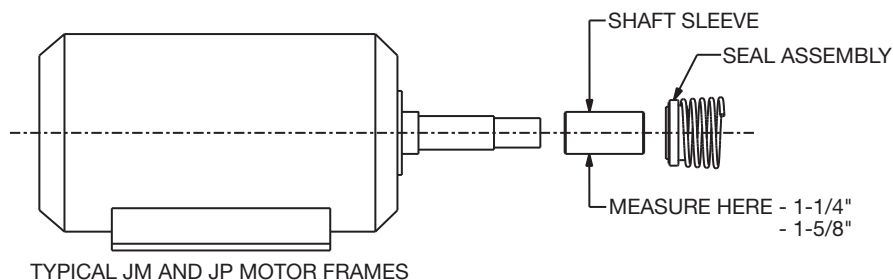
* Includes Wear Ring.

— Factory recommended spare parts.

6BC

ITEM NO.	DESCRIPTION	PUMP CONSTRUCTION			
		BRONZE FITTED	BRONZE FITTED WITH WEAR RING	ALL IRON	ALL BRONZE
PARTS COMMON TO BOTH TYPES					
4	Impeller (state diameter) 9 ¹ / ₂ " full dia. 1 ⁵ / ₈ " shaft sleeve	P50842	P50842	P50844	Not Offered
14	Impeller Capscrew 1 ⁵ / ₈ " shaft sleeve	P13800	P13800	P13800	
13	Impeller Lockwasher 1 ⁵ / ₈ " shaft sleeve	J23875	J23875	J23875	
3	Impeller Washer 1 ⁵ / ₈ " shaft sleeve	P51250	P51250	P46382	
9	Impeller Key 1 ⁵ / ₈ " shaft sleeve	P49372	P49372	P49372	
1	Volute	P43698	*P43874	P43698	
	Wear Ring	—	P49144	—	
15	Volute Drain Plug (4)	P39040	P39040	P39050	
11	Volute Capscrew (12) for Frame Sizes thru 256JP	P03470	P03470	P03470	
11	Volute Capscrew (12) for Frame Sizes 284JP and Larger	P54700	P54700	P54700	
2	Volute Gasket	P48690	P48690	P48690	
PARTS FOR STANDARD SEAL CONSTRUCTION					
5	Motor Bracket – Motor Frames 254JP-256JP	P77166	P77166	P77166	Not Offered
6	Motor Bracket Capscrew for above (4)	P13780	P13780	P13780	
5	Motor Bracket – Motor Frames 284JP-286JP, 324JP-326JP	P53500	P53500	P53500	
6	Motor Bracket Capscrew for above (4)	P19490	P19490	P19490	
12	Seal Kit Buna/Carbon/Ceramic 1 ⁵ / ₈ " shaft sleeve	186543LF	186543LF	186544	
12	Seal Kit EPR/Carbon/Tungsten Carbide 1 ⁵ / ₈ " shaft sleeve	185225LF	185225LF	—	
7	Shaft Sleeve Kit 1 ⁵ / ₈ " shaft sleeve	185021LF	185021LF	185022	
8	Water Slinger 1 ⁵ / ₈ " shaft sleeve	P53720	P53720	P53720	
PARTS FOR STUFFING BOX CONSTRUCTION					
5	Motor Bracket – Motor Frames 254JP-256JP	P85025	P85025	P85025	Not Offered
6	Motor Bracket Capscrew for above (4)	K03600	K03600	K03600	
5	Motor Bracket – Motor Frames 284JP-286JP, 324JP-326JP	P85099	P85099	P85099	
6	Motor Bracket Capscrew for above (4)	P19490	P19490	P19490	
	Packing	See Table C or D, Page 41			
	Single Seal Components	See Table A, Page 41			
	Double Seal Components	See Table B, Page 41			
	Shaft Sleeve	See Table A, B, C or D, Page 41			
29	Volute Coverplate 1 ⁵ / ₈ " shaft sleeve	P85039	P85039	P85039	
16	Volute Coverplate Capscrew for above (8)	P52320	P52320	P52320	
1	Volute-250 PSI Operation for -S and -PF Seals only	P43699	*P43878	P43699	
8	Water Slinger 1 ⁵ / ₈ " shaft sleeve	P77320	P77320	P77320	

* Includes Wear Ring.

 – Factory recommended spare parts.


2E

ITEM NO.	DESCRIPTION	PUMP CONSTRUCTION			
		BRONZE FITTED	BRONZE FITTED WITH WEAR RING	ALL IRON	ALL BRONZE
PARTS COMMON TO BOTH TYPES					
4	Impeller (state diameter) 11" full dia. 1 ¹ / ₄ " shaft sleeve	P50848	P50848	P50850	Not Offered
4	Impeller (state diameter) 11" full dia. 1 ⁵ / ₈ " shaft sleeve	P50880	P50880	P50882	
14	Impeller Capscrew 1 ¹ / ₄ " shaft sleeve	P52350	P52350	P52350	
14	Impeller Capscrew 1 ⁵ / ₈ " shaft sleeve	P13800	P13800	P13800	
13	Impeller Lockwasher 1 ¹ / ₄ " shaft sleeve	J23874	J23874	J23874	
13	Impeller Lockwasher 1 ⁵ / ₈ " shaft sleeve	J23875	J23875	J23875	
3	Impeller Washer 1 ¹ / ₄ " shaft sleeve	P46390	P46390	P46381	
3	Impeller Washer 1 ⁵ / ₈ " shaft sleeve	P51250	P51250	P46382	
9	Impeller Key 1 ¹ / ₄ " shaft sleeve	P49369	P49369	P49369	
9	Impeller Key 1 ⁵ / ₈ " shaft sleeve	P49372	P49372	P49372	
1	Volute	P43975	*P44039	P43975	
	Wear Ring	—	P49870	—	
15	Volute Drain Plug (4)	P39040	P39040	P39050	
11	Volute Capscrew (16)	P13780	P13780	P13780	
2	Volute Gasket	P80765	P80765	P80765	
8	Water Slinger 1 ¹ / ₄ " shaft sleeve	P53550	P53550	P53550	
PARTS FOR STANDARD SEAL CONSTRUCTION					
5	Motor Bracket – Motor Frames 184JM	N/A	N/A	N/A	Not Offered
6	Motor Bracket Capscrew for above (4)	P40020	P40020	P40020	
5	Motor Bracket – Motor Frames 213JM-215JM	P53026	P53026	P53026	
6	Motor Bracket Capscrew for above (4)	K03600	K03600	K03600	
5	Motor Bracket – Motor Frames 254JP-256JP	P53032	P53032	P53032	
6	Motor Bracket Capscrew for above (4)	P13780	P13780	P13780	
5	Motor Bracket – Motor Frames 284JP-286JP, 324JP-326JP	P53036	P53036	P53036	
6	Motor Bracket Capscrew for above (4)	P19490	P19490	P19490	
12	Seal Kit Buna/Carbon/Ceramic 1 ¹ / ₄ " shaft sleeve	186862LF	186862LF	186860	
12	Seal Kit Buna/Carbon/Ceramic 1 ⁵ / ₈ " shaft sleeve	186543LF	186543LF	186544	
12	Seal Kit EPR/Carbon/Tungsten Carbide 1 ¹ / ₄ " shaft sleeve	186861LF	186861LF	—	
12	Seal Kit EPR/Carbon/Tungsten Carbide 1 ⁵ / ₈ " shaft sleeve	185225LF	185225LF	—	
7	Shaft Sleeve Kit 1 ¹ / ₄ " shaft sleeve	185024LF	185024LF	185025	
7	Shaft Sleeve Kit 1 ⁵ / ₈ " shaft sleeve	185021LF	185021LF	185022	
8	Water Slinger 1 ⁵ / ₈ " shaft sleeve	P53720	P53720	P53720	
PARTS FOR STUFFING BOX CONSTRUCTION					
5	Motor Bracket – Motor Frames 182JP-184JP	P85023	P85023	P85023	Not Offered
6	Motor Bracket Capscrew for above (4)	P52320	P52320	P52320	
5	Motor Bracket – Motor Frames 213JP-215JP, 254JP-256JP	P85025	P85025	P85025	
6	Motor Bracket Capscrew for above (4)	K03600	K03600	K03600	
5	Motor Bracket – Motor Frames 284JP-286JP, 324JP-326JP	P85099	P85099	P85099	
6	Motor Bracket Capscrew for above (4)	P19490	P19490	P19490	
	Packing	See Table C or D, Page 41			
	Single Seal Components	See Table A, Page 41			
	Double Seal Components	See Table B, Page 41			
	Shaft Sleeve	See Table A, B, C or D, Page 41			
29	Volute Coverplate 1 ¹ / ₄ " shaft sleeve	P53052	P53052	P53052	
16	Volute Coverplate Capscrew for above (4)	P40020	P40020	P40020	
29	Volute Coverplate 1 ⁵ / ₈ " shaft sleeve	P53056	P53056	P53056	
16	Volute Coverplate Capscrew for above (8)	P52320	P52320	P52320	
1	Volute-250 PSI Operation for -S and -PF Seals only	P43976	*P44040	P43976	
8	Water Slinger 1 ⁵ / ₈ " shaft sleeve	P77320	P77320	P77320	

NOTE: 1¹/₄" Shaft Sleeve - up to and including motor frame 215JM
 1⁵/₈" Shaft Sleeve - motor frame 213JP and larger.

* Includes Wear Ring.

— Factory recommended spare parts.

N/A – NO LONGER AVAILABLE

3E

ITEM NO.	DESCRIPTION	PUMP CONSTRUCTION			
		BRONZE FITTED	BRONZE FITTED WITH WEAR RING	ALL IRON	ALL BRONZE
PARTS COMMON TO BOTH TYPES					
4	Impeller (state diameter) 11" full dia. 1/4" shaft sleeve	P50852	P50852	P50854	Not Offered
4	Impeller (state diameter) 11" full dia. 5/8" shaft sleeve	P50856	P50856	P50858	
14	Impeller Capscrew 1 1/4" shaft sleeve	P52350	P52350	P52350	
14	Impeller Capscrew 1 5/8" shaft sleeve	P13800	P13800	P13800	
13	Impeller Lockwasher 1 1/4" shaft sleeve	J23874	J23874	J23874	
13	Impeller Lockwasher 1 5/8" shaft sleeve	J23875	J23875	J23875	
3	Impeller Washer 1 1/4" shaft sleeve	P46390	P46390	P46381	
3	Impeller Washer 1 5/8" shaft sleeve	P51250	P51250	P46382	
9	Impeller Key 1 1/4" shaft sleeve	P49369	P49369	P49369	
9	Impeller Key 1 5/8" shaft sleeve	P49372	P49372	P49372	
1	Volute	P43978	*P44031	P43978	
	Wear Ring	—	P50650	—	
15	Volute Drain Plug (4)	P39040	P39040	P39050	
11	Volute Capscrew (16)	P13780	P13780	P13780	
2	Volute Gasket	P80765	P80765	P80765	
8	Water Slinger 1 1/4" shaft sleeve	P53550	P53550	P53550	
PARTS FOR STANDARD SEAL CONSTRUCTION					
5	Motor Bracket – Motor Frames 184JM	N/A	N/A	N/A	Not Offered
6	Motor Bracket Capscrew for above (4)	P40020	P40020	P40020	
5	Motor Bracket – Motor Frames 213JM-215JM	P53026	P53026	P53026	
6	Motor Bracket Capscrew for above (4)	K03600	K03600	K03600	
5	Motor Bracket – Motor Frames 254JP-256JP	P53032	P53032	P53032	
6	Motor Bracket Capscrew for above (4)	P13780	P13780	P13780	
12	Seal Kit Buna/Carbon/Ceramic 1 1/4" shaft sleeve	186862LF	186862LF	186860	
12	Seal Kit Buna/Carbon/Ceramic 1 5/8" shaft sleeve	186543LF	186543LF	186544	
12	Seal Kit EPR/Carbon/Tungsten Carbide 1 1/4" shaft sleeve	186861LF	186861LF	—	
12	Seal Kit EPR/Carbon/Tungsten Carbide 1 5/8" shaft sleeve	185225LF	185225LF	—	
7	Shaft Sleeve Kit 1 1/4" shaft sleeve	185024LF	185024LF	185025	
7	Shaft Sleeve Kit 1 5/8" shaft sleeve	185021LF	185021LF	185022	
8	Water Slinger 1 5/8" shaft sleeve	P53720	P53720	P53720	
PARTS FOR STUFFING BOX CONSTRUCTION					
5	Motor Bracket – Motor Frames 182JP-184JP	P85023	P85023	P85023	Not Offered
6	Motor Bracket Capscrew for above (4)	P52320	P52320	P52320	
	Motor Bracket – Motor Frames 213JP-215JP, 254JP-256JP	P85025	P85025	P85025	
6	Motor Bracket Capscrew for above (4)	K03600	K03600	K03600	
	Packing	See Table C or D, Page 41			
	Single Seal Components	See Table A, Page 41			
	Double Seal Components	See Table B, Page 41			
	Shaft Sleeve	See Table A, B, C or D, Page 41			
29	Volute Coverplate 1 1/4" shaft sleeve	P53052	P53052	P53052	
16	Volute Coverplate Capscrew for above (4)	P40020	P40020	P40020	
29	Volute Coverplate 1 5/8" shaft sleeve	P53056	P53056	P53056	
16	Volute Coverplate Capscrew for above (8)	P52320	P52320	P52320	
1	Volute-250 PSI Operation for -S and -PF Seals only	P43979	*P44035	P43979	
8	Water Slinger 1 5/8" shaft sleeve	P77320	P77320	P77320	

NOTE: 1 1/4" Shaft Sleeve - up to and including motor frame 215JM
 1 5/8" Shaft Sleeve - motor frame 213JP and larger.

* Includes Wear Ring.

— Factory recommended spare parts.

N/A – NO LONGER AVAILABLE

4E

ITEM NO.	DESCRIPTION	PUMP CONSTRUCTION			
		BRONZE FITTED	BRONZE FITTED WITH WEAR RING	ALL IRON	ALL BRONZE
PARTS COMMON TO BOTH TYPES					
4	Impeller (state diameter) 11" full dia. 1 ¹ / ₄ " shaft sleeve	P50862	P50862	P50864	Not Offered
4	Impeller (state diameter) 11" full dia. 1 ⁵ / ₈ " shaft sleeve	P50866	P50866	P50868	
14	Impeller Capscrew 1 ¹ / ₄ " shaft sleeve	P52350	P52350	P52350	
14	Impeller Capscrew 1 ⁵ / ₈ " shaft sleeve	P13800	P13800	P13800	
13	Impeller Lockwasher 1 ¹ / ₄ " shaft sleeve	J23874	J23874	J23874	
13	Impeller Lockwasher 1 ⁵ / ₈ " shaft sleeve	J23875	J23875	J23875	
3	Impeller Washer 1 ¹ / ₄ " shaft sleeve	P46390	P46390	P46381	
3	Impeller Washer 1 ⁵ / ₈ " shaft sleeve	P51250	P51250	P46382	
9	Impeller Key 1 ¹ / ₄ " shaft sleeve	P49369	P49369	P49369	
9	Impeller Key 1 ⁵ / ₈ " shaft sleeve	P49372	P49372	P49372	
1	Volute	P43985	*P44032	P43985	
	Wear Ring	—	P49142	—	
15	Volute Drain Plug (4)	P39040	P39040	P39050	
11	Volute Capscrew (16)	P13780	P13780	P13780	
2	Volute Gasket	P80765	P80765	P80765	
8	Water Slinger 1 ¹ / ₄ " shaft sleeve	P53550	P53550	P53550	
PARTS FOR STANDARD SEAL CONSTRUCTION					
5	Motor Bracket – Motor Frames 213JM-215JM	P53026	P53026	P53026	Not Offered
6	Motor Bracket Capscrew for above (4)	K03600	K03600	K03600	
5	Motor Bracket – Motor Frames 254JP-256JP	P53032	P53032	P53032	
6	Motor Bracket Capscrew for above (4)	P13780	P13780	P13780	
5	Motor Bracket – Motor Frames 284JP-286JP	P53036	P53036	P53036	
6	Motor Bracket Capscrew for above (4)	P19490	P19490	P19490	
12	Seal Kit Buna/Carbon/Ceramic 1 ¹ / ₄ " shaft sleeve	186862LF	186862LF	186860	
12	Seal Kit Buna/Carbon/Ceramic 1 ⁵ / ₈ " shaft	186543LF	186543LF	186544	
12	Seal Kit EPR/Carbon/Tungsten Carbide 1 ¹ / ₄ " shaft sleeve	186861LF	186861LF	—	
12	Seal Kit EPR/Carbon/Tungsten Carbide 1 ⁵ / ₈ " shaft sleeve	185225LF	185225LF	—	
7	Shaft Sleeve Kit 1 ¹ / ₄ " shaft sleeve	185024LF	185024LF	185025	
7	Shaft Sleeve Kit 1 ⁵ / ₈ " shaft sleeve	185021LF	185021LF	185022	
8	Water Slinger 1 ⁵ / ₈ " shaft sleeve	P53720	P53720	P53720	
PARTS FOR STUFFING BOX CONSTRUCTION					
5	Motor Bracket – Motor Frames 213JP-215JP, 254JP-256JP	P85025	P85025	P85025	Not Offered
6	Motor Bracket Capscrew for above (4)	K03600	K03600	K03600	
5	Motor Bracket – Motor Frames 284JP-286JP	P85099	P85099	P85099	
6	Motor Bracket Capscrew for above (4)	P19490	P19490	P19490	
	Packing	See Table C or D, Page 41			
	Single Seal Components	See Table A, Page 41			
	Double Seal Components	See Table B, Page 41			
	Shaft Sleeve	See Table A, B, C or D, Page 41			
29	Volute Coverplate 1 ⁵ / ₈ " shaft sleeve	P53056	P53056	P53056	
16	Volute Coverplate Capscrew for above (8)	P52320	P52320	P52320	
1	Volute-250 PSI Operation for -S and -PF Seals only	P43986	*P44036	P43986	
8	Water Slinger 1 ⁵ / ₈ " shaft sleeve	P77320	P77320	P77320	

NOTE: 1¹/₄" Shaft Sleeve - up to and including motor frame 215JM
 1⁵/₈" Shaft Sleeve - motor frame 213JP and larger.

* Includes Wear Ring.

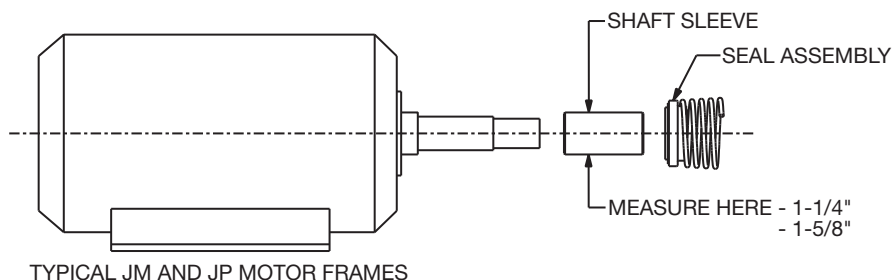
— Factory recommended spare parts.

5E

ITEM NO.	DESCRIPTION	PUMP CONSTRUCTION			
		BRONZE FITTED	BRONZE FITTED WITH WEAR RING	ALL IRON	ALL BRONZE
PARTS COMMON TO BOTH TYPES					
4	Impeller (state diameter) 11" full dia. 1 ⁵ / ₈ " shaft sleeve	P50872	P50872	P50874	Not Offered
14	Impeller Capscrew 1 ⁵ / ₈ " shaft sleeve	P13800	P13800	P13800	
13	Impeller Lockwasher 1 ⁵ / ₈ " shaft sleeve	J23875	J23875	J23875	
3	Impeller Washer 1 ⁵ / ₈ " shaft sleeve	P51250	P51250	P46382	
9	Impeller Key 1 ⁵ / ₈ " shaft sleeve	P49372	P49372	P49372	
1	Volute	P43992	*P44033	P43992	
	Wear Ring	—	P51390	—	
15	Volute Drain Plug (4)	P39040	P39040	P39050	
11	Volute Capscrew (16)	P13780	P13780	P13780	
2	Volute Gasket	P80765	P80765	P80765	
PARTS FOR STANDARD SEAL CONSTRUCTION					
5	Motor Bracket – Motor Frames 254JP-256JP	P53032	P53032	P53032	Not Offered
6	Motor Bracket Capscrew for above (4)	P13780	P13780	P13780	
5	Motor Bracket – Motor Frames 284JP-286JP, 324JP-326JP	P53036	P53036	P53036	
6	Motor Bracket Capscrew for above (4)	P19490	P19490	P19490	
12	Seal Kit Buna/Carbon/Ceramic 1 ⁵ / ₈ " shaft sleeve	186543LF	186543LF	186544	
12	Seal Kit EPR/Carbon/Tungsten Carbide 1 ⁵ / ₈ " shaft sleeve	185225LF	185225LF	—	
7	Shaft Sleeve Kit 1 ⁵ / ₈ " shaft sleeve	185021LF	185021LF	185022	
8	Water Slinger 1 ⁵ / ₈ " shaft sleeve	P53720	P53720	P53720	
PARTS FOR STUFFING BOX CONSTRUCTION					
5	Motor Bracket – Motor Frames 254JP-256JP	P85025	P85025	P85025	Not Offered
6	Motor Bracket Capscrew for above (4)	K03600	K03600	K03600	
5	Motor Bracket – Motor Frames 284JP-286JP, 324JP-326JP	P85099	P85099	P85099	
6	Motor Bracket Capscrew for above (4)	P19490	P19490	P19490	
	Packing	See Table C or D, Page 41			
	Single Seal Components	See Table A, Page 41			
	Double Seal Components	See Table B, Page 41			
	Shaft Sleeve	See Table A, B, C or D, Page 41			
29	Volute Coverplate 1 ⁵ / ₈ " shaft sleeve	P53056	P53056	P53056	
16	Volute Coverplate Capscrew for above (8)	P52320	P52320	P52320	
1	Volute-250 PSI Operation for -S and -PF Seals only	P43993	*P44037	P43993	
8	Water Slinger 1 ⁵ / ₈ " shaft sleeve	P77320	P77320	P77320	

* Includes Wear Ring.

— - Factory recommended spare parts.

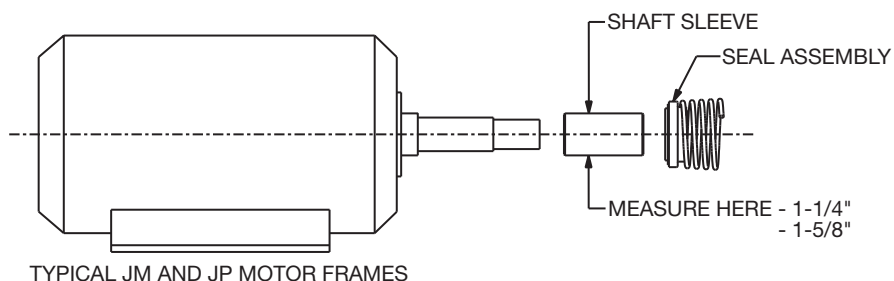


6E

ITEM NO.	DESCRIPTION	PUMP CONSTRUCTION			
		BRONZE FITTED	BRONZE FITTED WITH WEAR RING	ALL IRON	ALL BRONZE
PARTS COMMON TO BOTH TYPES					
4	Impeller (state diameter) 11" full dia. 1 ⁵ / ₈ " shaft sleeve	P50876	P50876	P50878	Not Offered
14	Impeller Capscrew 1 ⁵ / ₈ " shaft sleeve	P13800	P13800	P13800	
13	Impeller Lockwasher 1 ⁵ / ₈ " shaft sleeve	J23875	J23875	J23875	
3	Impeller Washer 1 ⁵ / ₈ " shaft sleeve	P51250	P51250	P46382	
9	Impeller Key 1 ⁵ / ₈ " shaft sleeve	P49372	P49372	P49372	
1	Volute	P43998	*P44034	P43998	
	Wear Ring	—	P81949	—	
15	Volute Drain Plug (4)	P39040	P39040	P39050	
11	Volute Capscrew (16)	P13780	P13780	P13780	
2	Volute Gasket	P80765	P80765	P80765	
PARTS FOR STANDARD SEAL CONSTRUCTION					
5	Motor Bracket – Motor Frames 254JP-256JP	P53032	P53032	P53032	Not Offered
6	Motor Bracket Capscrew for above (4)	P13780	P13780	P13780	
5	Motor Bracket – Motor Frames 284JP-286JP, 324JP-326JP	P53036	P53036	P53036	
6	Motor Bracket Capscrew for above (4)	P19490	P19490	P19490	
12	Seal Kit Buna/Carbon/Ceramic 1 ⁵ / ₈ " shaft sleeve	186543LF	186543LF	186544	
12	Seal Kit EPR/Carbon/Tungsten Carbide 1 ⁵ / ₈ " shaft sleeve	185225LF	185225LF	—	
7	Shaft Sleeve Kit 1 ⁵ / ₈ " shaft sleeve	185021LF	185021LF	185022	
8	Water Slinger 1 ⁵ / ₈ " shaft sleeve	P53720	P53720	P53720	
PARTS FOR STUFFING BOX CONSTRUCTION					
5	Motor Bracket – Motor Frames 254JP-256JP	P85025	P85025	P85025	Not Offered
6	Motor Bracket Capscrew for above (4)	K03600	K03600	K03600	
5	Motor Bracket – Motor Frames 284JP-286JP, 324JP-326JP	P85099	P85099	P85099	
6	Motor Bracket Capscrew for above (4)	P19490	P19490	P19490	
	Packing	See Table C or D, Page 41			
	Single Seal Components	See Table A, Page 41			
	Double Seal Components	See Table B, Page 41			
	Shaft Sleeve	See Table A, B, C or D, Page 41			
29	Volute Coverplate 1 ⁵ / ₈ " shaft sleeve	P53056	P53056	P53056	
16	Volute Coverplate Capscrew for above (8)	P52320	P52320	P52320	
1	Volute-250 PSI Operation for -S and -PF Seals only	P43999	*P44038	P43999	
8	Water Slinger 1 ⁵ / ₈ " shaft sleeve	P77320	P77320	P77320	

* Includes Wear Ring.

— Factory recommended spare parts.



ITEM	DESCRIPTION	PUMP SIZE				
		2G	3G	4G	5G	6G
1	Volute	P44071	P44073	P85684	P44077	P44081
	Volute with Bronze Wear Ring	P44091	P44092	P85685	P44094	P44095
	Bronze Wear Ring	P49130	P50650	P49134	P49136	P49138
15	Volute Drain Plug (4)	P39040	P39040	P39040	P39040	P39040
11	Volute Capscrew (16)	P13780	P13780	P13780	P13780	P13780
	Volute Cover Plate	P51561	P51561	P51561	P51561	P51561
	Volute Cover Plate Capscrew (8)	DJ0071	DJ0071	DJ0071	DJ0071	DJ0071
2	Volute Gasket	P80767	P80767	P80767	P80767	P80767
5	Motor Bracket - Motor Frames 254JP,256JP	P85025	P85025	P85025	P85025	P85025
6	Motor Capscrew (4) - Motor Frames 254JP,256JP	K03600	K03600	K03600	K03600	K03600
5	Motor Bracket - Motor Frames 284JP,286JP,324JP,326JP	P85099	P85099	P85099	P85099	P85099
6	Motor Capscrew (4) - Motor Frames 284JP,286JP,324JP,326JP	J92288	J92288	J92288	J92288	J92288
4	Impeller (State Diameter) 13.5" Full Diameter	P51412	P51416	P85691	P78533	P78535
14	Impeller Capscrew	P13800	P13800	P13800	P13800	P13800
13	Impeller Lockwasher	J23875	J23875	J23875	J23875	J23875
3	Impeller Washer	P51250	P51250	P51250	P51250	P51250
9	Impeller Key	P49372	P49372	P49372	P49372	P49372
8	Water Slinger	P53720	P53720	P53720	P53720	P53720
12	Seal Kit Buna / Carbon vs Ceramic	186543LF	186543LF	186543LF	186543LF	186543LF
12	Seal Kit EPR / Carbon vs Tungsten Carbide	185225LF	185225LF	185225LF	185225LF	185225LF
7	Shaft Sleeve - Bronze	P2000500	P2000500	P2000500	P2000500	P2000500
7	Shaft Sleeve Kit - Stainless Steel	185147	185147	185147	185147	185147

ITEM	DESCRIPTION	SIZE
		8G
1	Volute	AC0274
11	Volute Capscrew (8)	P13810
	Volute O-Ring	AC0543
15	Volute Drain Plug	H47900
	Volute Gauge Plug (2)	AC0532
	Stuff Box Cover	AC1282
	Gland	AC3053
	Gland Stud (2)	AC0581
	Gland Nut (2)	AC0501
5	Motor Bracket - Motor Frames 284JP,286JP,324JP,326JP,364JP,365JP	AC0945
6	Motor Bracket Capscrew (4)	DJ0134
2	Motor Bracket Gasket	P80767
4	Impeller (State Diameter) 13" Full Diameter - Motor Frames 284JP,286JP,324JP,326JP For Pumps Without Wear Ring Option	P2000501
4	Impeller (State Diameter) 13" Full Diameter - Motor Frames 284JP,286JP,324JP,326JP For Pumps With Wear Rings	P2001123
9	Impeller Key - Motor Frames 284JP,286JP,324JP,326JP	P49372
4	Impeller (State Diameter) 13" Full Diameter - Motor Frames 364JP,365JP For Pumps Without Wear Ring Option	AC0394
4	Impeller (State Diameter) 13" Full Diameter - Motor Frames 364JP,365JP For Pumps With Wear Rings	AC1225
9	Impeller Key - Motor Frames 364JP,365JP	AC0524
	Bronze Wear Ring (2)	AC0769
14	Impeller Capscrew	AC3020
12	Seal Asm. Buna / Carbon vs Ceramic	AC3046
12	Seal Asm. EPR / Carbon vs Tungsten Carbide	AC3049
7	Shaft Sleeve - Motor Frames 284JP,286JP,324JP,326JP	AC3043
7	Shaft Sleeve - Motor Frames 364JP,365JP	AC0601
	Spacer Sleeve	AC0573

Factory recommended spare parts.

Mechanical Seals for Stuffing Box Type Pumps

ITEM NO.	DESCRIPTION	NUMBER REQUIRED	1 ¹ / ₄ " SHAFT SLEEVE	1 ⁵ / ₈ " SHAFT SLEEVE
----------	-------------	-----------------	--	--

TABLE A – ALL IRON AND BRONZE FITTED PUMPS – SINGLE SEAL – SERIES S

23	Seal Assembly EPR/Carbon/Tungsten Carbide	1	P85070	185050LF
24	Seal Cap	1	P85082	P85086
28	Seal Cap Capscrew	4	H28100	H28100
26	Seal Cap Nut	4	P52380	P52380
27	Seal Cap Washer	4	P10910	P10910
25	Seal Cap Gasket	1	P85077	P85078
7	Shaft Sleeve	1	186023	185022

TABLE B – ALL IRON AND BRONZE FITTED PUMPS – DOUBLE SEAL – SERIES D

23	Seal Assembly EPR/Carbon/Ceramic	1	P85066	186843
24	Seal Cap	1	P85090	P85094
28	Seal Cap Capscrew	4	H28100	H28100
26	Seal Cap Nut	4	P52380	P52380
27	Seal Cap Washer	4	P10910	P10910
25	Seal Cap Gasket	1	NONE	P85078
7	Shaft Sleeve	1	186023	185022

Packing Sets for Stuffing Box Type Pumps

ITEM NO.	DESCRIPTION	NUMBER REQUIRED	1 ¹ / ₄ " SHAFT SLEEVE	1 ⁵ / ₈ " SHAFT SLEEVE
----------	-------------	-----------------	--	--

TABLE C – BRONZE FITTED PUMPS – SERIES PF

17	Packing Ring Set (4 Pieces to Each Set)	1 Set	P82070	P82072
18	Lantern Ring Set (2 Pieces to Each Set)	1 Set	P84985	P84986
19	Packing Gland Halves	2	P85048	P85050
21	Packing Gland Capscrew	2	J92052	J92052
22	Packing Gland Nut	2	J91659	J91659
20	Packing Gland Washer	2	J91649	J91649
7	Shaft Sleeve	1	P85075	185022

TABLE D – ALL IRON PUMPS – SERIES PF

17	Packing Ring Set (4 Pieces to Each Set)	1 Set	P82070	P82072
18	Lantern Ring Set (2 Pieces to Each Set)	1 Set	P84985	P84986
19	Packing Gland Halves	2	P85049	P85051
21	Packing Gland Capscrew	2	J92052	J92052
22	Packing Gland Nut	2	J91659	J91659
20	Packing Gland Washer	2	J91649	J91649
7	Shaft Sleeve	1	P85075	185022

NOTE: Bronze Fitted Pumps are designated "BF" on nameplate.

All Iron Pumps are designated "AI" on nameplate.

Bronze Fitted Pumps with wearing rings are designated "BFW" on nameplate.

Bronze Fitted Pumps with special "EPT" seal are designated "BFE" on nameplate and are not furnished in the "Stuffing Box" construction – only in the "Standard Seal" type.

– Factory recommended spare parts.

Motor Frame Size Selection Chart ODP and TEFC

3 PH MOTOR FRAME SELECTION*						
ODP			TEFC			
HP	3600	1800	1200	3600	1800	1200
1/2	—	—	143JM	—	—	143JM
3/4	—	—	143JM	—	—	143JM
1	—	143JM	145JM	—	143JM	145JM
1 1/2	143JM	145JM	182JM	143JM	145JM	182JM
2	145JM	145JM	184JM	145JM	145JM	184JM
3	145JM	182JM	213JM	182JM	182JM	213JM
5	182JM	184JM	215JM	184JM	184JM	215JM
7 1/2	184JM	213JM	254JP	213JM	213JM	254JP
10	213JM	215JM	256JP	215JM	215JM	256JP
15	215JM	254JP	284JP	254JP	254JP	284JP
20	254JP	256JP	286JP	256JP	256JP	286JP
25	256JP	284JP	324JP	284JP	284JP	324JP
30	284JP	286JP	326JP	286JP	286JP	326JP
40	286JP	324JP	—	324JP	324JP	—
50	324JP	326JP	—	326JP	326JP	—
60	326JP	—	—	—	—	—

*1Ø motors are one frame size larger than shown.

Xylem |'zīləm|

- 1) The tissue in plants that brings water upward from the roots;
- 2) a leading global water technology company.

We're 12,500 people unified in a common purpose: creating innovative solutions to meet our world's water needs. Developing new technologies that will improve the way water is used, conserved, and re-used in the future is central to our work. We move, treat, analyze, and return water to the environment, and we help people use water efficiently, in their homes, buildings, factories and farms. In more than 150 countries, we have strong, long-standing relationships with customers who know us for our powerful combination of leading product brands and applications expertise, backed by a legacy of innovation.

For more information on how Xylem can help you, go to www.xyleminc.com



Xylem Inc.
8200 N. Austin Avenue
Morton Grove, Illinois 60053
Phone: (847) 966-3700
Fax: (847) 965-8379
www.bellgossett.com

Bell & Gossett is a trademark of Xylem Inc. or one of its subsidiaries.
© 2014 Xylem Inc. CP-305L-PL June 2014