



BPX™ Brazed Plate Heat Exchangers

For Residential Applications

BPX™ High Performance Brazen Plate Heat Exchangers



- **High performance.** BPX Brazen Plate Heat Exchangers offer the highest level of thermal efficiency and durability in a compact, low-cost unit.
- **Compact design.** The corrugated plate design provides very high heat transfer coefficients, resulting in a smaller surface area. This makes the BPX an excellent choice; especially where space is a consideration.
- **Solid self-contained unit.** Thin corrugated stainless steel plates are vacuum brazed together to form a very durable, integral piece that can withstand both high pressure and high temperature.
- **Numerous applications.** BPX units are ideal for residential applications such as radiant, snow melt, domestic hot water, and pool heating. They also can be used as refrigerant condensers and evaporators, as oil coolers for engines and machinery, and in many other industrial applications.



Thermal Performance

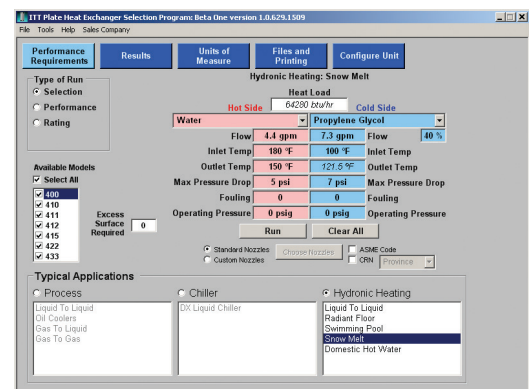
Bell & Gossett's unique heat transfer plate designs provide high rates of heat transfer requiring less surface area than conventional shell and tube heat exchangers. Compare BPX with conventional shell and tube units:

- One-sixth the size
- One-fifth the weight
- Uses only one-eighth the liquid
- Requires one-third to one-fifth the surface area

Technical Performance

Based on a tradition of advanced heat transfer design, Bell & Gossett's Selection software makes the design of your BPX Brazen Plate Heat Exchanger simple, fast and accurate.

- Thermal design
- Special configuration capabilities
- Drawing generation



Design Performance

Mechanical Design:

Design pressures up to 435 psig. Maximum design temperature up to 450°F. Minimum design temperature to -310°F.

Construction Codes:

Available codes include UL, CRN, and ASME Code Stamp.

Materials:

Stainless Steel 316L plates. Copper or Nickel brazed material.



Connections:

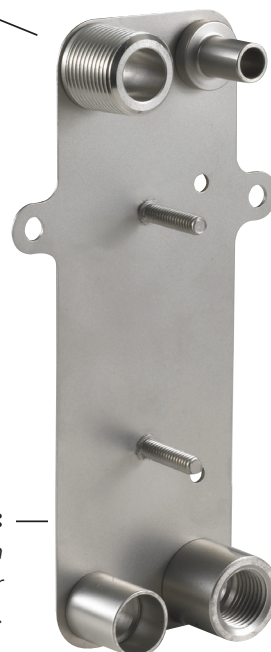
From 1/2 inch to 4 inch. Standard connection options include NPT, SAE, Flanged and Sweat. Custom connections available.

Capacity:

Up to 800 GPM and 350 Sq.ft. of surface area.

Mounting:

Reduce mounting costs with optional threaded studs or integral mounting bracket.



Delivery Performance

Bell & Gossett's advanced lean manufacturing process provides fast deliveries and high on-time performance.

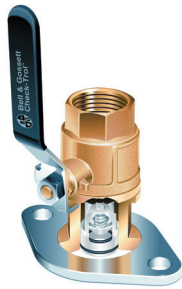
- Same day service for most models
- ASME Code Stamp in 3 working days
- Special configurations in 5 working days
- Prototypes in 10 working days



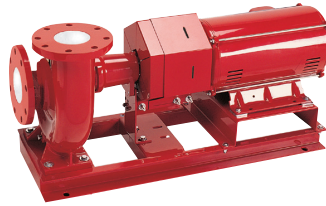
Xylem products



Circuit Sentry™
Automatic Flow Limiting Valve



Chek-Trol™
Isolation Flow Control Flange



1510 Centrifugal Pump

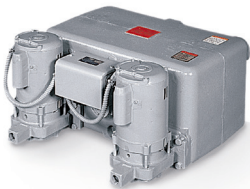


Maintenance-Free
Circulators

Domestic® Pump manufactures condensate transfer equipment for steam systems

McDonnell & Miller manufactures boiler controls, flow switches and liquid level controls

Hoffman Specialty® manufactures steam traps, regulators and valves



Domestic Pump Condensate
Transfer Package



McDonnell & Miller
Low Water Cut-Off



Hoffman Specialty Steam Traps