

VORTEX AIR SEPARATORS | MODELS VA/VAS |
4" to 12" | SUBMITTAL

File No: 37.621
Date: SEPTEMBER 22, 2016
Supersedes: 37.621
Date: AUGUST 03, 2016

Job: _____ Representative: _____

_____ Order no.: _____ Date: _____

Engineer: _____ Submitted by: _____ Date: _____

Contractor: _____ Approved by: _____ Date: _____

DATA

Model no. ordered: _____ Qty: _____

Tag no.: _____

MATERIALS OF CONSTRUCTION

Shell: 4" to 6" Models: Cast Iron

8" to 12" Models: Fabricated Steel

Strainer: Stainless Steel mesh (¼" x ¾")

Gasket: Non-asbestos

TECHNICAL DATA

Max. working temperature: 375°F (190°C)

Max. working pressure: 4" to 6" Models: 160 PSI (1103 kPa)
8" to 12" Models: 165 PSI (1140 kPa)

Connection type: 4" to 6" Models: 150# flanged ANSI flat face
8" to 12" Models: 150# flanged ANSI raised face

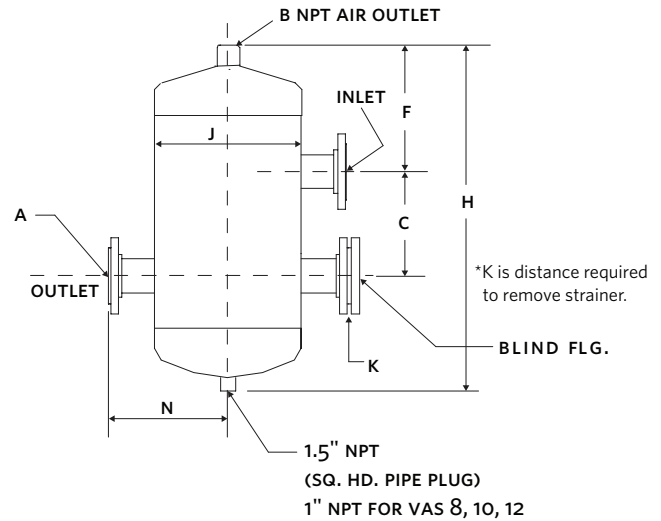
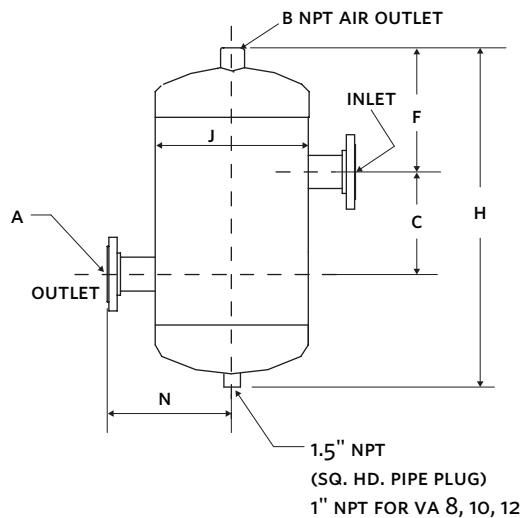
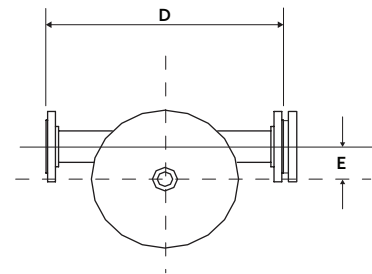
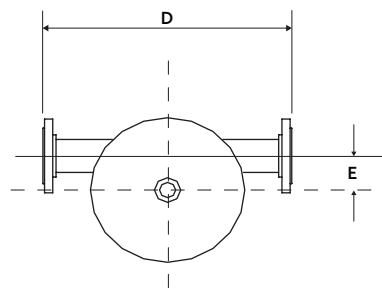
TYPICAL SPECIFICATION

Furnish & install an Armstrong Vortex® Air separator, Model _____ VA or model _____ VAS (with strainer) with flanged tangential connections as shown on plans. The unit shall be designed and built in accordance with the latest revisions of ASME Pressure vessel code, section VIII, Division 1. A blowdown connection is provided for routine cleaning of the unit.

NOTES

All models designed and built to ASME Pressure vessel code, section VIII, Division 1.

MODEL		DIMENSIONS inches (mm)										MAX. FLOW RATE IN USgpm (L/s) FOR LINE VELOCITY ft/s (m/s)			WEIGHT lbs. (kg)		STRAINER SCREEN FREE AREA
LESS STRAINER	WITH STRAINER	A	B	C	D	E	F	H	J	K	N	4 (1.22)	6 (1.83)	8 (2.44)	VA	VAS	Sq. in. (Sq. cm)
VA-4	VAS-4	4.00 (102)	1.50 (38)	9.50 (241)	18.00 (457)	2.25 (57)	6.80 (173)	22.25 (565)	10.75 (273)	16.00 (406)	9.00 (229)	160 (10.1)	240 (15.1)	320 (20.2)	121 (55)	151 (69)	76 (490)
VA-5	VAS-5	5.00 (127)	1.50 (38)	11.00 (279)	20.00 (508)	2.88 (73)	8.69 (221)	28.00 (711)	12.75 (324)	19.00 (483)	10.00 (254)	250 (9.84)	375 (14.8)	500 (31.6)	173 (79)	207 (94)	124 (800)
VA-6	VAS-6	6.00 (152)	1.50 (38)	12.50 (318)	24.00 (610)	4.00 (102)	9.85 (250)	32.24 (819)	16.00 (406)	22.00 (558)	12.00 (305)	360 (22.7)	540 (34.1)	720 (45.4)	264 (120)	306 (139)	183 (1181)
VA-8	VAS-8	8.00 (203)	2.00 (51)	16.00 (406)	28.00 (711)	5.00 (127)	12.81 (310)	41.25 (1048)	20.00 (508)	26.00 (660)	14.00 (356)	630 (39.8)	940 (59.3)	1250 (78.9)	228 (103)	332 (151)	302 (1949)
VA-10	VAS-10	10.00 (254)	2.00 (51)	20.00 (508)	32.00 (813)	5.75 (146)	15.00 (381)	49.50 (1257)	24.00 (610)	29.00 (737)	16.00 (406)	990 (62.5)	1500 (94.6)	1980 (124.9)	390 (177)	547 (248)	452 (2916)
VA-12	VAS-12	12.00 (305)	2.00 (51)	26.00 (660)	38.00 (965)	7.75 (197)	17.56 (446)	61.25 (1556)	30.00 (762)	36.00 (914)	19.00 (483)	1400 (88.3)	2100 (132.5)	2800 (176.7)	609 (276)	856 (388)	679 (4381)



TORONTO
+1 416 755 2291

BUFFALO
+1 716 693 8813

BIRMINGHAM
+44 (0) 8444 145 145

MANCHESTER
+44 (0) 8444 145 145

BANGALORE
+91 (0) 80 4906 3555

SHANGHAI
+86 21 3756 6696

SÃO PAULO
+55 11 4781 5500

MODEL VA

MODEL VAS