



FILE NO: 113.58  
DATE: Nov. 03, 2011  
SUPERSEDES: New  
DATE: New

## Brazed Plate Heat Exchanger

### Model ABD055 - Double Wall

## SUBMITTAL

JOB: _____	REPRESENTATIVE: _____
_____	_____
ENGINEER: _____	ORDER NO: _____ DATE: _____
CONTRACTOR: _____	SUBMITTED BY: _____ DATE: _____
_____	APPROVED BY: _____ DATE: _____

QUANTITY	TAG No.	MODEL No.	COMMENTS

#### ABD - BRAZED PLATE HEAT EXCHANGERS DOUBLE WALL

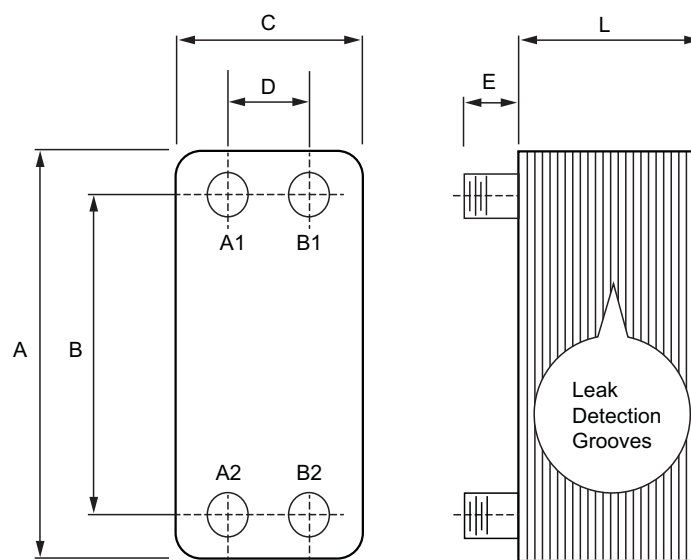
Armstrong's ABD brazed plate heat exchangers are designed to facilitate heat transfer between two media of different temperatures. ABD produces high heat transfer rates that allow for a compact, corrosion resistant and robust design.

#### TYPICAL SPECIFICATION

Furnish and install on the plans and described herein, an Armstrong ABD055-\_\_\_\_\_ brazed plate heat exchanger. Each heat exchanger must be designed to have the capacity and pressure/temperature rating as detailed in the schedule. The heat exchanger must utilize 316L stainless steel plates and copper braze to separate the two fluids while transferring heat and preventing corrosion.

To prevent cross contamination of the two media the heat exchanger shall be of double wall design. **The media shall be separated by two plates with an air gap between them providing a positive leak path with detection grooves.**

Each heat exchanger shall be Armstrong ABD055-\_\_\_\_\_ or approved equal.



#### CONSTRUCTION

Connections				Description	Dimensions - inch (mm)	
	Size - inch	Location	Rating	Number of plates (N):	A	13.00 (332)
Fluid 1 Inlet	1.00	A2	NPT	Design Pressure <input type="checkbox"/> 435 psi (30 bar) <input type="checkbox"/> 150 psi (10 bar)*	B	11.00 (281)
Fluid 1 Outlet	1.00	A1	NPT		C	4.90 (124)
Fluid 2 Inlet	1.00	B1	NPT	Max Temperature    437 °F/150 °C	D	2.90 (73)
Fluid 2 Outlet	1.00	B2	NPT	Plate Material <input type="checkbox"/> 316 SS <input type="checkbox"/> NiMo SS**	E	0.80 (20)
Notes					L	0.51 + 0.095N (12.95 + 2.4N)
* Design pressure with N: Braze ** NiMo SS is a high alloy stainless steel for corrosion resistance				Braze Material <input type="checkbox"/> Copper <input type="checkbox"/> Nickel*	Weight	4.0 + (0.3 x N) lbs 1.5 + (0.135 x N) kgs
				Connection Material <input type="checkbox"/> 304 SS <input type="checkbox"/> 316 SS	Volume	(0.01 x N) gals (0.055 x N) liters

S. A. Armstrong Limited  
23 Bertrand Avenue  
Toronto, Ontario  
Canada, M1L 2P3  
T: 416-755-2291  
F: 416-759-9101

Armstrong Pumps Inc.  
93 East Avenue  
North Tonawanda, New York  
U.S.A. 14120-6594  
T: 716-693-8813  
F: 716-693-8970

Armstrong Integrated Limited  
Wenlock Way  
Manchester  
United Kingdom, M12 5JL  
T: +44 (0) 8444 145 145  
F: +44 (0) 8444 145 146



© S.A. Armstrong Limited 2011

For Armstrong locations worldwide, please visit [www.armstrongintegrated.com](http://www.armstrongintegrated.com)