

# ARMSTRONG



## Motor Mounted Centrifugal Pumps

File no.:	42.10
Date:	JULY 24, 2013
Supersedes:	42.10
Date:	MAY 13, 2009

# Features That Ensure Performance Excellence!



## Volute

Radially-split volute can be left in the line while servicing the pump, eliminating needless disconnecting of pipes. Tapped openings are provided for venting, draining and gauge connections.

## Impeller

High strength engineered resin or bronze impeller reduces axial thrust to a minimum, ensuring smooth performance and long life.

## Motor

The motor is equipped with heavy-duty, permanently lubricated ball bearings adequately rated to accommodate impeller radial loads and residual hydraulic thrusts. Designed to operate at 3600 rpm.

## Mechanical seal

Self-lubricating, prevents liquid spillage. A carbon face rotating against a stationary ceramic seat provides positive sealing up to full design pressure (Type 21).

## Adaptor

Aluminum die cast, with integral support foot, delivering lightweight, durable construction.

## Shaft

Motor shaft extends through to impeller, eliminating intermediate bearing bracket for close coupled design.

## Back pull-out design

Eliminates the need to break piping connections when servicing the pump. The motor, with bracket and impeller attached, can be easily withdrawn from the volute after moving the volute capscrews.

## Materials of construction

		BRONZE FITTED PUMP	ALL BRONZE PUMP
Volute		Cast iron	Bronze
Volute cap screws		Steel	
Impeller		PEI resin or Bronze	
Mechanical seal (type 21)	Insert	Carbon	
	Seat	Ceramic	
	Bellows	Viton	
	L-cup	Viton	
	Retainer	Stainless steel	
	Spring	Stainless steel	
Motor/bracket		Aluminum	
Faceplate		Stainless steel	

## Applications

- Cooling towers
- HVAC
- General purpose

## Optional equipment

Seal Flushline

## Technical data

**Suction size:** 1¼", 1½", 2"

**Max. flow (3600 RPM):** 130 USgpm (8.2 L/s)

**Max. head (3600 RPM):** 130 FT (39.6 M)

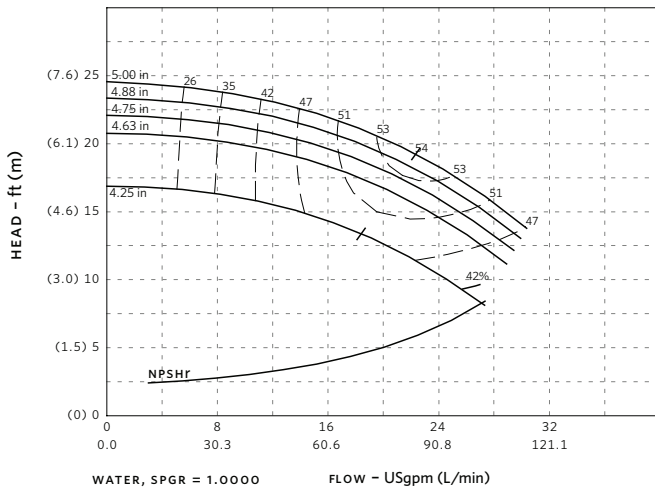
**Max. working pressure:** 150 psig (1034 kPa)

**Max. operating temperature:** 275°F (135°C)

# Motor Mounted Centrifugal Pumps

## Performance curves

1.25 × 1 × 5 - 1800 RPM

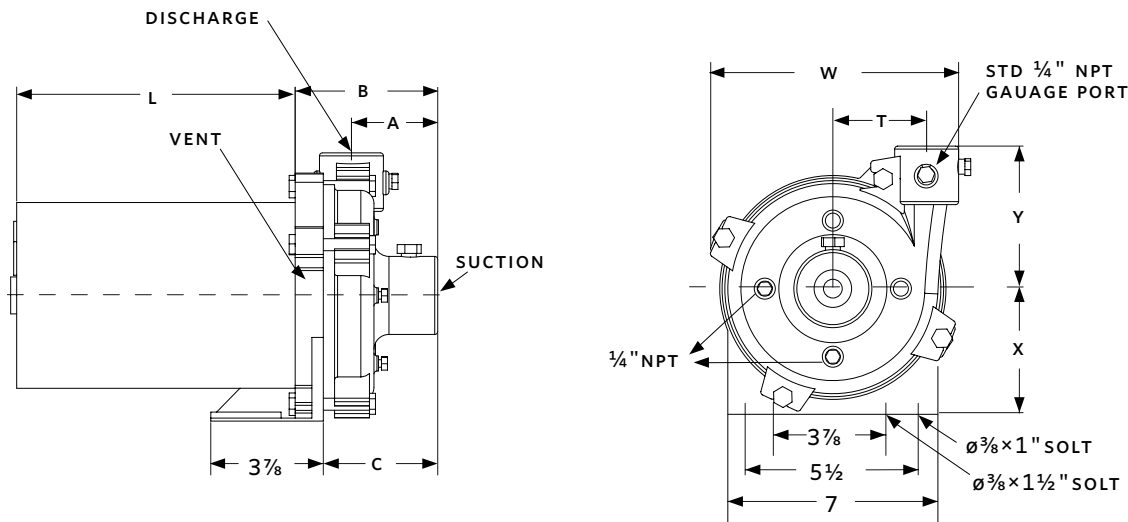


## Dimensions

MODEL	A	B	C	W	T	X	Y
1¼" × 1"	2.88 (73)	4.75 (121)	3.81 (97)	8.25 (210)	3.12 (79)	4.19 (106)	4.75 (121)
1½" × 1¼"	2.88 (73)	4.75 (121)	3.81 (97)	8.33 (212)	3.12 (79)	4.19 (106)	4.75 (121)
2" × 1½"	2.88 (73)	4.75 (121)	3.81 (97)	8.50 (216)	3.12 (79)	4.19 (106)	4.75 (121)

MOTOR	L
⅓, ½, ¾ hp	9.28 (236)
1 hp	9.78 (248)
1½ hp	10.18 (259)
2, 3 hp	11.18 (284)
5 hp	11.37 (289)

Note: Dimensions are in inches (mm). For exact dimensions please write factory.  
All pump sized are provided with NPT screwed connections.



## Typical specifications

Furnish and install, as shown on the plans and specifications, an Armstrong series 4270 End suction motor mounted centrifugal pumping unit suitable for 150 psig (1034 kPa) working pressure with radially-split \_\_\_\_\_ casing, PEI resin or bronze impeller, 416 stainless steel shaft and single inside-type 21 mechanical seal. The driving motor shall be horizontal, solid shaft, squirrel cage induction motor with NEMA c flange and \_\_\_\_\_ enclosure, suitable for operation on a \_\_\_\_\_ volt, \_\_\_\_\_ cycle phase power supply. The complete unit shall be suitable for \_\_\_\_\_ as shown on the pump schedule, or for the following service: \_\_\_\_\_, capacity \_\_\_\_\_ USgpm (L/s), total head \_\_\_\_\_ feet (m), liquid \_\_\_\_\_, temperature \_\_\_\_\_ °F (°C), viscosity \_\_\_\_\_ ssu, pump size \_\_\_\_\_, speed \_\_\_\_\_ rpm, motor rating \_\_\_\_\_ hp.

**S. A. ARMSTRONG LIMITED**  
23 Bertrand Avenue  
Toronto, Ontario  
Canada, M1L 2P3  
T +1 416 755 2291  
F +1 416 759 9101

**ARMSTRONG PUMPS INC.**  
93 East Avenue  
North Tonawanda, New York  
U.S.A., 14120-6594  
T +1 716 693-8813  
F +1 716 693-8970

**ARMSTRONG INTEGRATED LIMITED**  
Wenlock Way  
Manchester  
United Kingdom, M12 5JL  
T +44 (0) 8444 145 145  
F +44 (0) 8444 145 146



© S. A. ARMSTRONG LIMITED 2013